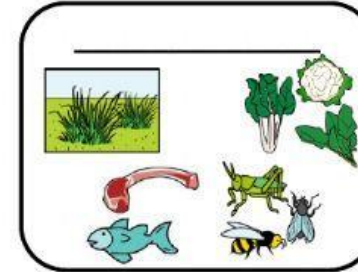
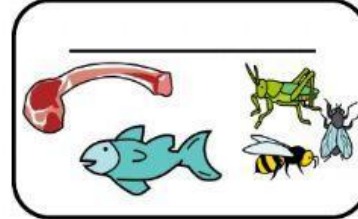
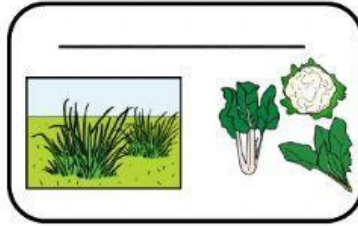
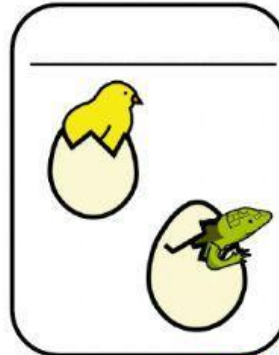
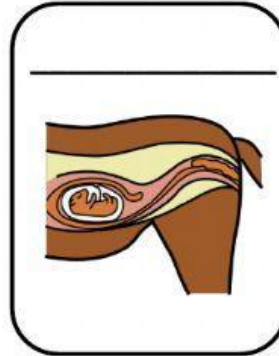
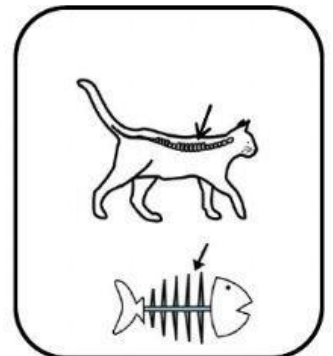


CLASSIFICACIÓ DELS ANIMALS



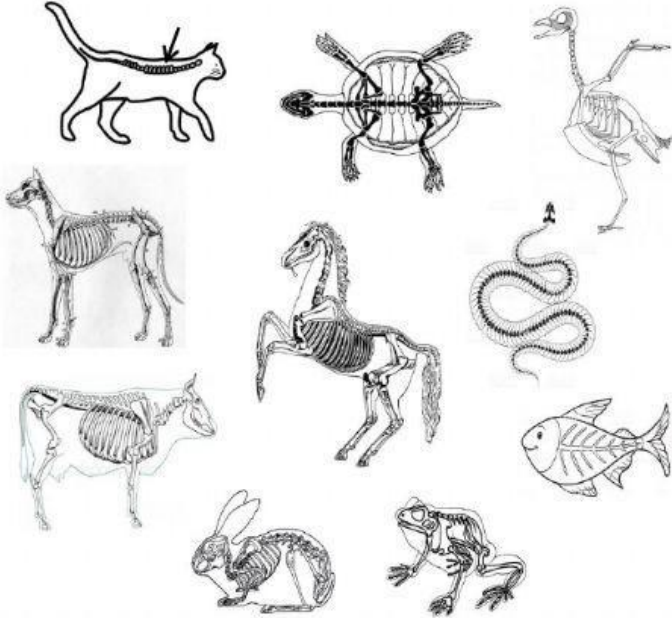






SEGONS si tenen o no **ESQUELET**
ELS ANIMALS PODEN SER:

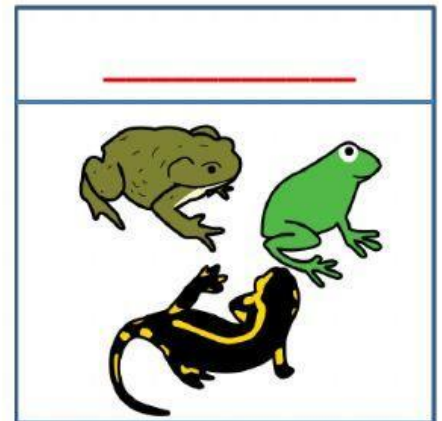
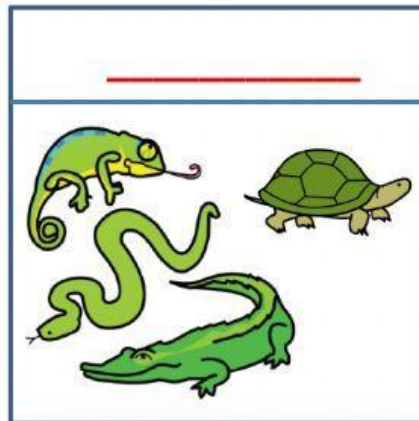
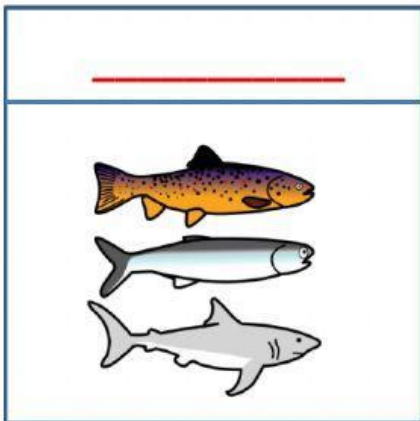
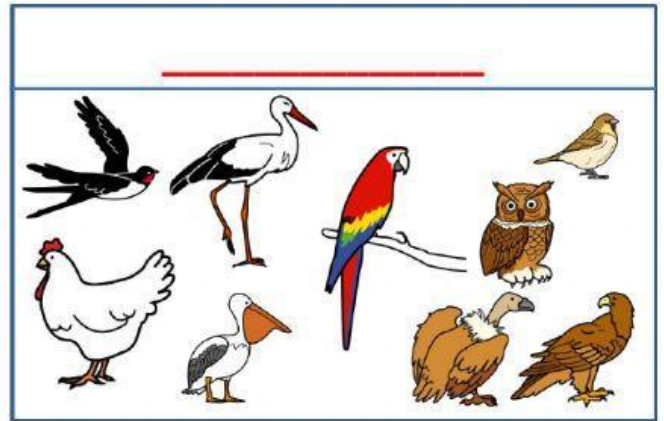
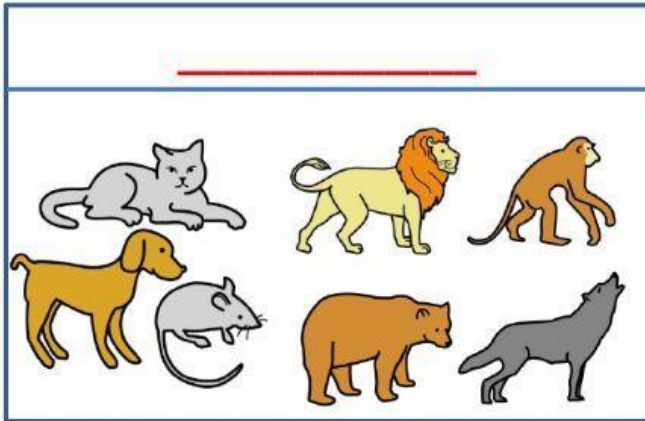
TENEN ESQUELET (ossos).



NO TENEN ESQUELET (ossos).

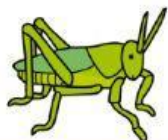


TIPUS D'ANIMALS



TIPUS D'ANIMALS

BESTIOLES (BICHITOS)



LA MAJORIA DELS ANIMALS DE LA MAR QUE NO SÓN PEIXOS

