



# Unit 7 Toys

## Lesson 1



Exercise 1: Look, read and match.



big

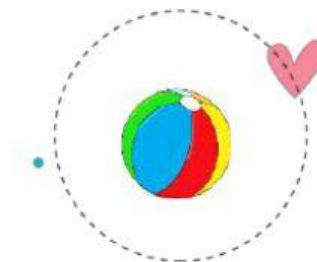
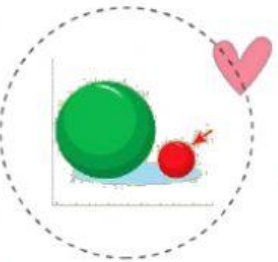
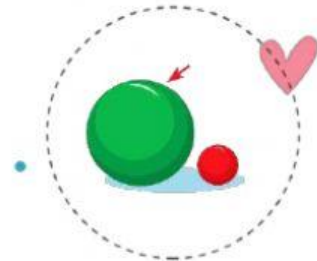
doll

robot

small

ball

car



Exercise 2: Unscramble the letters then write.

a a c r




b b l l



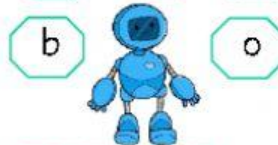

c i b g



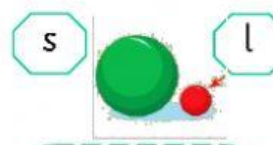

d o l l




e r o t




f a m l





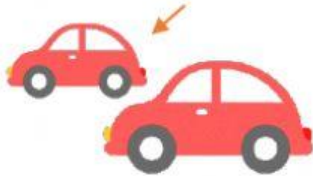


# Unit 7 Toys

## Lesson 1



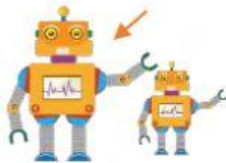
Exercise 5: Look, read and put a tick (✓) or a cross (✗) in the box.



a I can see a big car. ☐



b I can see a small ball. ☐



c I can see a small robot. ☐



d I can see a big doll. ☐



e I can see a big ball. ☐



f I can see a blue plane. ☐



Exercise 6: Look and circle.



a I can see a green robot / dinosaur.



b I can see a red car / ball.



c I can see a building set / plane.



d I can see a brown doll / teddy.





# Unit 7 Toys

## Lesson 1



### Exercise 7: Read and match.

1) What can you see?

2) Is that your robot?

3) What do you want?

4) Are these your toys?

5) Can you see a big ball?

6) Do you have a plane?

a) Yes, it is.

b) I can see a big robot.

c) Yes, I do.

d) I want a big car.

e) No, they aren't.

f) Yes, I can.



### Exercise 8: Reorder and write.

a What you can see ?

b can see I ball a big .

c That is robot a small .

d see a red I can car .

e Can see you a small doll ?

f Those my are toys .





# Unit 7 Toys

## Review and Practice



Exercise 1: Look, read and circle.

|  |             |
|--|-------------|
|  | a. toy box  |
|  | b. wardrobe |
|  | c. desk     |

|  |          |
|--|----------|
|  | a. under |
|  | b. on    |
|  | c. in    |

|  |          |
|--|----------|
|  | a. robot |
|  | b. car   |
|  | c. ball  |

|  |             |
|--|-------------|
|  | a. bed      |
|  | b. chair    |
|  | c. wardrobe |

|  |           |
|--|-----------|
|  | a. marble |
|  | b. dice   |
|  | c. car    |

|  |          |
|--|----------|
|  | a. in    |
|  | b. on    |
|  | c. under |

|  |          |
|--|----------|
|  | a. card  |
|  | b. robot |
|  | c. block |

|  |          |
|--|----------|
|  | a. boat  |
|  | b. plane |
|  | c. dice  |

|  |          |
|--|----------|
|  | a. under |
|  | b. in    |
|  | c. on    |

|  |             |
|--|-------------|
|  | a. eleven   |
|  | b. twelve   |
|  | c. thirteen |

