

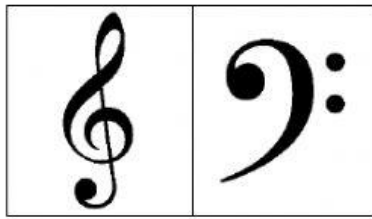
CENTREVILLE PRIMARY SCHOOL

MUSIC

WORKSHEET

TREBLE AND BASS CLEF

LISTEN TO THE CLIP AND SELECT THE CORRECT CLEF.



DRAG ALL THE PICTURES THAT BELONG TO THE TREBLE CLEF TO THE YELLOW BOX. THEN DRAG ALL THE PICTURES THAT BELONG TO THE BASS CLEF TO THE BLUE BOX.



