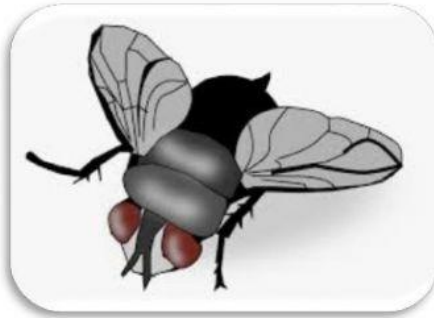


Name: \_\_\_\_\_ Date: \_\_\_\_\_

### Listening Comprehension

#### The Hateful Housefly

#### Fact and Opinion



Listen to the story above. Then answer the following questions.

1. What evidence in the passage suggest that flies are everywhere?

\_\_\_\_\_

2. State **TWO** reasons why the antennae are important to the fly.

a. \_\_\_\_\_

b. \_\_\_\_\_

3. Based on the passage, match the words from Column A with a word that is similar in meaning from Column B. Write the letter in the column provided.

Column A		Column B
pesky		A) extremely
resourceful		B) annoying
monumentally		C) capable

4. How is a fly able to eat a piece of potato?

---

5. Read each statement below. Write **F** if the statement is a Fact and **O** if it is an Opinion.

\_\_\_\_\_ Everyone hates flies.

\_\_\_\_\_ Flies are ugly bugs.

\_\_\_\_\_ Flies move only when they want food.

\_\_\_\_\_ Flies can make people sick.

6. According to the passage, write down the names of **TWO** sicknesses that can be caused by flies.

---

---