

**EVALUACIÓN DE LOS APRENDIZAJES**

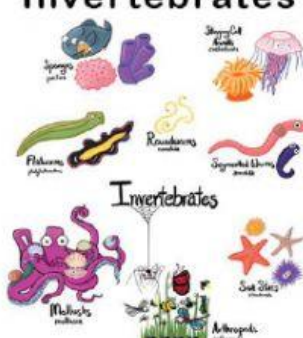
<b>PERÍODO LECTIVO:</b>	2020-2021	<b>QUIMESTRE:</b>	1	<b>ASIGNATURA:</b> Science
<b>DOCENTE/S:</b>	María José Flores			<b>GRADO-CURSO:</b> 4 EGB
<b>FECHA:</b>				<b>PARALELO:</b> -B-C
				<b>CALIFICACIÓN:</b> /10

<b>PROPÓSITO DE EVALUACIÓN:</b>	SCIENCE	<b>NOMBRE DE LA UNIDAD:</b>	Living beings / Human Body
<b>DESTREZAS CON CRITERIO DE DESEMPEÑO A SER EVALUADAS</b>	<b>INDICADORES ESENCIALES EVALUACIÓN CONSIDERADOS EN LA EVALUACIÓN</b>		
<p>CN.2.1.4. Observe and describe the characteristics of animals and classify them into vertebrates and invertebrates, by the presence or absence of a backbone</p> <p>CN.2.1.2 Observe and identify the changes in the life cycle of different animals (insects, fish, amphibians, reptiles, birds and mammals) and compare them with the changes in the human life cycle.</p> <p>CN.2.2.1. Locate the brain, heart, lungs and stomach in your body, explain their functions and relate them to the maintenance of life.</p>	<p>I.CN.2.2.1 Classify the animals into vertebrates or invertebrates according to the presence or absence of backbone and other characteristics related to the rest of the body. Group vertebrates and examine their usefulness to humans and their habitats. J3, I2</p> <p>Learners will be able to explain in clear and appropriate language, location of brain, lungs, heart, skeletal muscles and joints in the body; and their respective roles (support, movement and protection) in structure and relationship with maintenance of life.</p>		

<b>GENERAL INSTRUCTIONS</b>	<ul style="list-style-type: none"> <li>- You have 60 minutes to complete the exam.</li> <li>- Read the instructions for each section carefully before answering the questions.</li> <li>- Once you have answered all the questions, make a revision and send it.</li> </ul>
-----------------------------	---

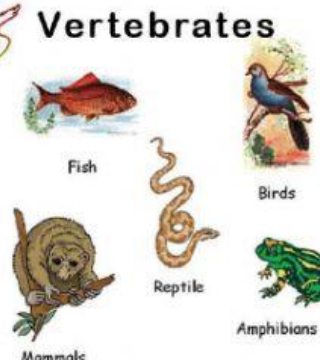
**1. Vertebrates are classified into:**

**Invertebrates**



**7 groups**

**Vertebrates**



**5 groups**

**EVALUACIÓN DE LOS APRENDIZAJES**

**2. Plants with flowers are known as:**



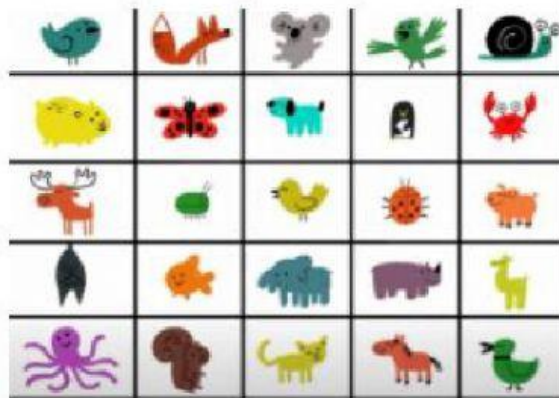
Gymnosperms	Angiosperms
-------------	-------------

**3. Choose a reptile.**



Snake	Lion
-------	------

**4. They have an internal skeleton.**



Invertebrates	Vertebrates
---------------	-------------

**EVALUACIÓN DE LOS APRENDIZAJES**

**5. They give birth to live young and nurse their babies with milk:**



Birds	Mammals
-------	---------

**6. The skeleton protects organs like: the heart and the lungs.**



True	False
------	-------

**7. Three main parts of the human body.**



Head, trunk, upper and lower limbs	Head, brain, stomach
--	-------------------------

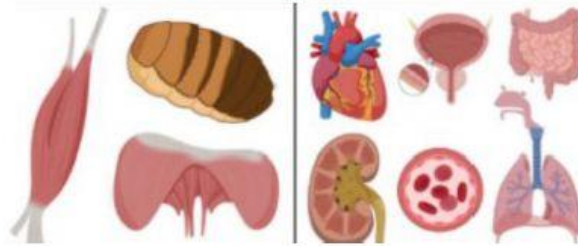
EVALUACIÓN DE LOS APRENDIZAJES

8. The human body has 600 muscles.



True	False
------	-------

9. An example of an involuntary muscle is:



Tongue	Stomach
--------	---------

10. We have to eat healthy and exercise regularly in order to stay healthy.



True	False
------	-------

VALORACIÓN:

Cada respuesta correcta tiene el valor de 1 punto.  
 El valor total del examen es de      /      = 10/10