

REPTILES (I) 2º

Choose the right answer



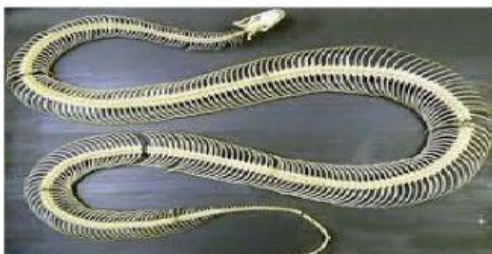
- a) A turtle is a mammal.
- b) A turtle is a reptile.
- c) A turtle is a bird.



- a) A crocodile is a vertebrate animal.
- b) A crocodile is an invertebrate animal.



- a) Reptiles are viviparous animals.
- b) Reptiles are oviparous animals.



- a) Reptiles have got bones.
- b) Reptiles have not got bones.



- a) A snake is an amphibian.
- b) A snake is a mammal.
- c) A snake is a reptile.



- a) Reptiles have got hair.
- b) Reptiles have got scales.
- c) Reptiles have got wings.



- a) An iguana is an amphibian.
- b) An iguana is a mammal.
- c) An iguana is a reptile.



- a) Snakes and turtles are oviparous.
- b) Snakes and turtles are viviparous.