



# Science Department

Grade Six

# Animal Cells

T: Layal Shehayeb Abo Dargham



**1) Choose the correct answer:**

**a)** The bone cell has:

- No branches
- Many small branches
- One long branch

**b)** An elongated human cell with several nuclei is the:

- Muscle cell
- Nerve cell
- Bone cell

**c)** The red blood cell is:

- Red with no nucleus
- Red with a nucleus
- Colourless with no nucleus

**d)** I have 2 nuclei. I'm the:

- White blood cell
- Nerve cell
- Paramecium

**2) Complete the following statements with the right answer.**

**a)** The paramecium is a \_\_\_\_\_ organism. It uses its \_\_\_\_\_ to move and sweep food into its oral groove.

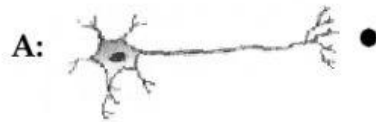
**b)** The \_\_\_\_\_ is found only in plant cells and not animal cells.

**c)** Animals and plants are \_\_\_\_\_ organisms since they have \_\_\_\_\_.

3) Match the diagram of each cell to its name.

Cell:

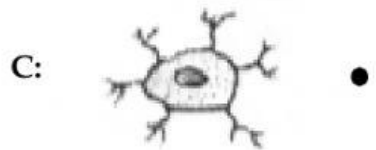
Name:



- Red blood cell



- Nerve cell



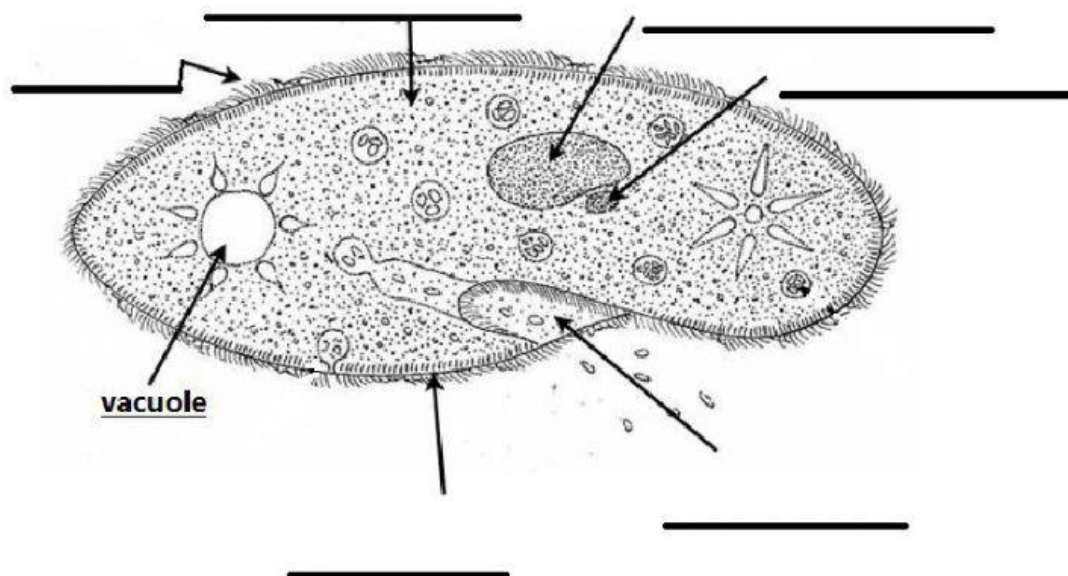
- White blood cell



- Bone cell

4) Drag the organelles below to label the paramecium cell.

macronucleus	micronucleus	cytoplasm	cilia	Cell membrane	Oral groove
--------------	--------------	-----------	-------	---------------	-------------



- 5) Put a (✓) in the correct places to show the difference between a red blood cell (RBC) and a white blood cell (WBC):

Properties	RBC	WBC
a- It defends the body against microbes.		
b- It is colorless with 1 big irregular nucleus.		
c- It carries oxygen in the blood.		
d- It has a small disc shape with no nucleus.		

