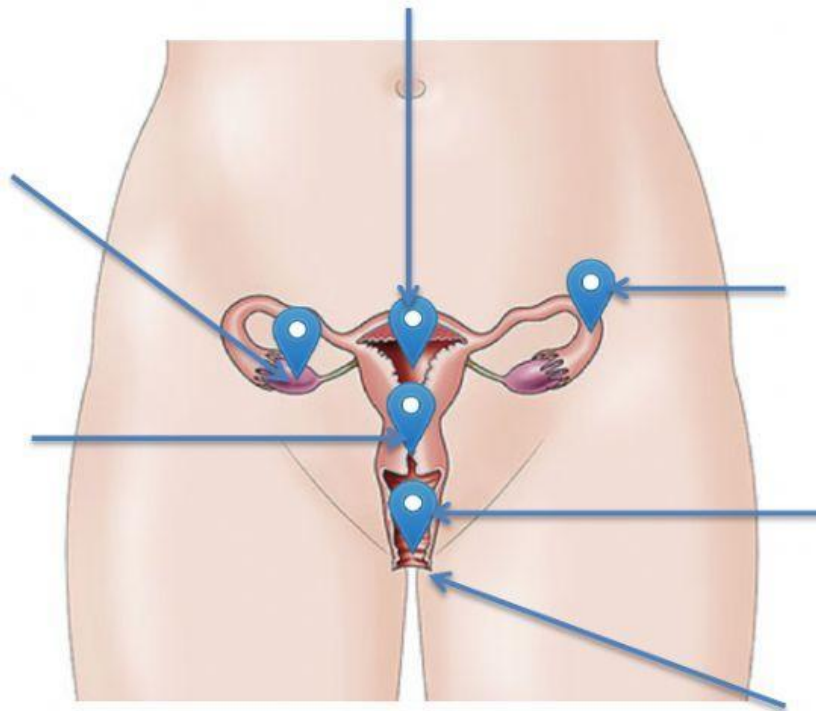


FEMALE REPRODUCTIVE SYSTEM

1. Drag and drop:



2. Complete the definitions using the words from exercise one.

- _____: carry mature ova from the ovaries to the uterus.
- _____: is where the fertilised ovum develops into a baby.
- _____: produce female reproductive cells called ova.
- The baby leaves the uterus through a narrow opening called _____.
- _____: external part of the female reproductive organs.
- Muscular tube that goes from the uterus to the outside of the body: _____