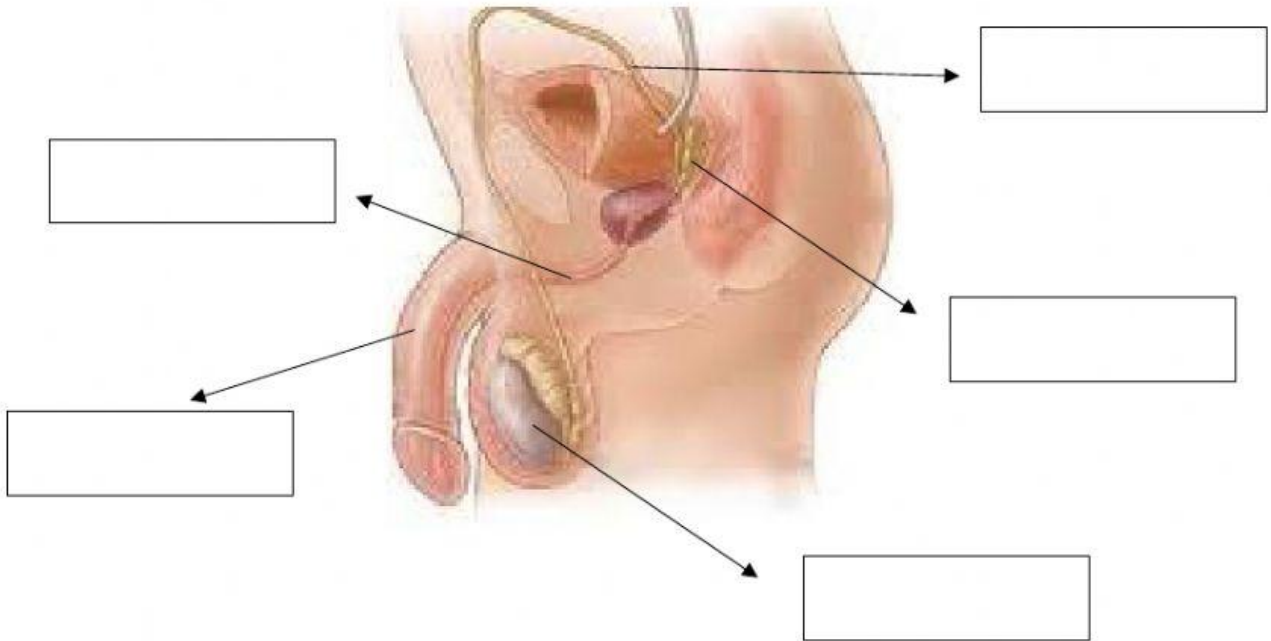


# THE REPRODUCTIVE SYSTEM

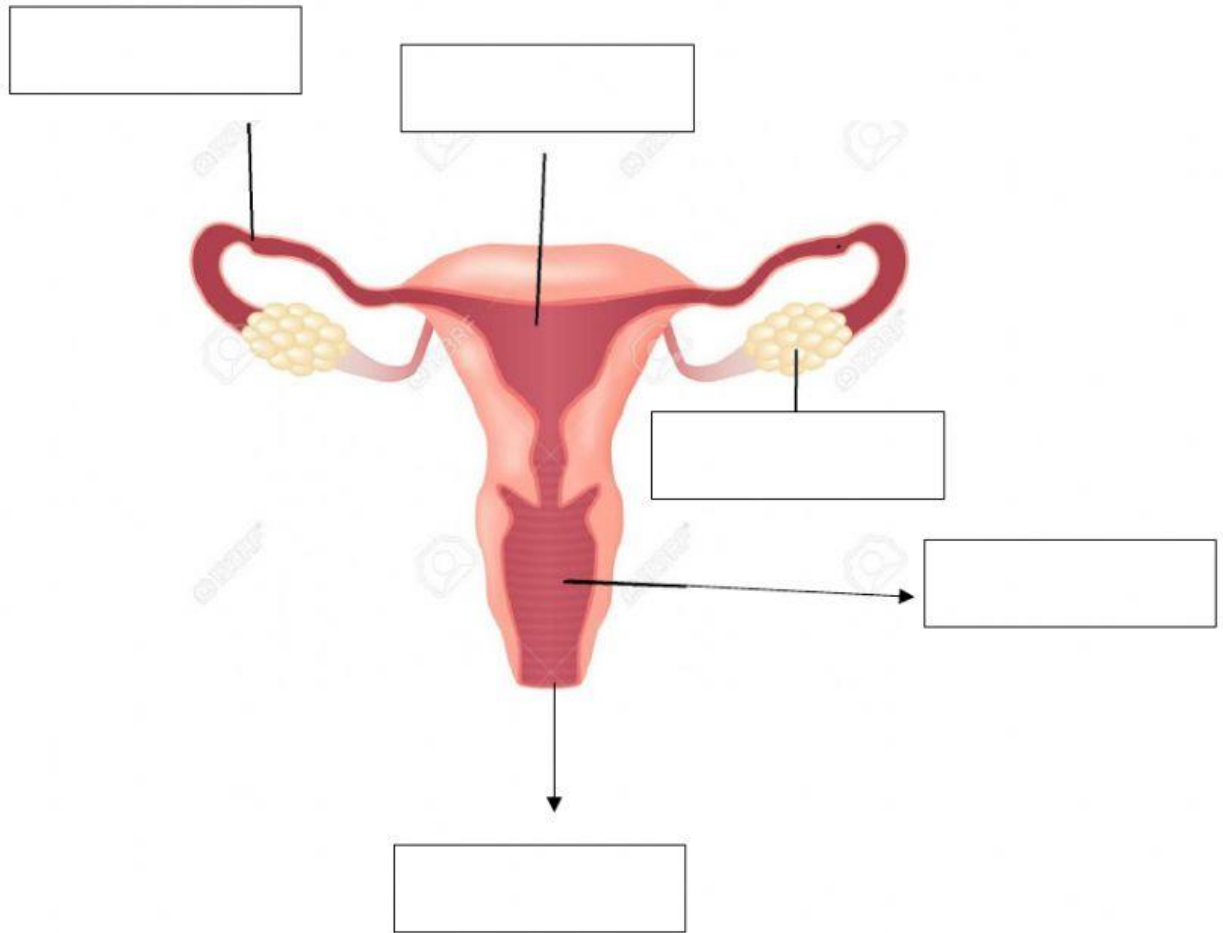
## 1. Which part are these?



## 2. Complete these sentences.

- The \_\_\_\_\_ are two organs that are outside the abdominal cavity.
- \_\_\_\_\_, which are cells, are produced in the testicles.
- The \_\_\_\_\_ is the most external part of the male reproductive system.
- The \_\_\_\_\_ are two very thin tubes that collect sperm from the testicles and transport them to the urethra.
- The \_\_\_\_\_ are two glands located behind the bladder. These vesicles produce \_\_\_\_\_ which flows into the urethra.
- The \_\_\_\_\_ is a tube connected to the vas deferens.

### 3. Which are these parts?



### 4. Complete the following sentences.

- The \_\_\_\_\_ are two organs each the size of an almond.
- Ovaries produce and develop the \_\_\_\_\_, which are the female reproductive cells.
- The \_\_\_\_\_ are the tubes which link the ovaries to the uterus.
- The \_\_\_\_\_ is a cavity with thick muscular walls.
- The \_\_\_\_\_ is the passage which links the uterus with the outside of the body.
- The \_\_\_\_\_ is the external organ of the female reproductive system.

5. Circle the parts of the female reproductive system. Complete the definitions.

F	T	R	E	C	B	M	W	Q	P
Y	F	A	L	L	O	P	I	A	N
N	T	A	W	S	Q	U	B	E	I
S	U	T	E	R	U	S	O	G	L
F	B	Z	R	Y	A	G	K	G	L
A	E	M	N	N	C	V	L	C	H
V	S	V	A	G	I	N	A	E	T
L	D	G	S	S	H	U	A	L	G
U	A	O	C	B	F	J	W	L	B
V	I	E	X	I	V	R	E	C	U

- a) They connect the ovaries and the uterus (Two words) \_\_\_\_\_
- b) The narrow part of the uterus that connects it to the vagina \_\_\_\_\_
- c) A muscular canal that connects the cervix to the vulva \_\_\_\_\_
- d) Where a fertilized egg cells develops into a fetus. \_\_\_\_\_
- e) The female gamete or ovum (two words) \_\_\_\_\_
- f) The external sex organs of the female reproductive system  
\_\_\_\_\_