


|  |                    |         |        |
|--|--------------------|---------|--------|
| <br>Manahej | Science Department | Grade 3 | Quiz 2 |
|--|--------------------|---------|--------|

**Exercise 1:**

**Match the picture of the environment to its name.**



●

● Desert Environment



●

● Forest Environment



●

● Aquatic Environment

## Exercise 2

Observe the pictures and then select the name of the pollutant.



Household garbage

sewage



Household garbage

Fuel

## Exercise 3:

Drag each word to the correct place to complete the sentences.

aquatic

pollution

desert

habitat

1- A(n)  is an environment where animals and plants live.

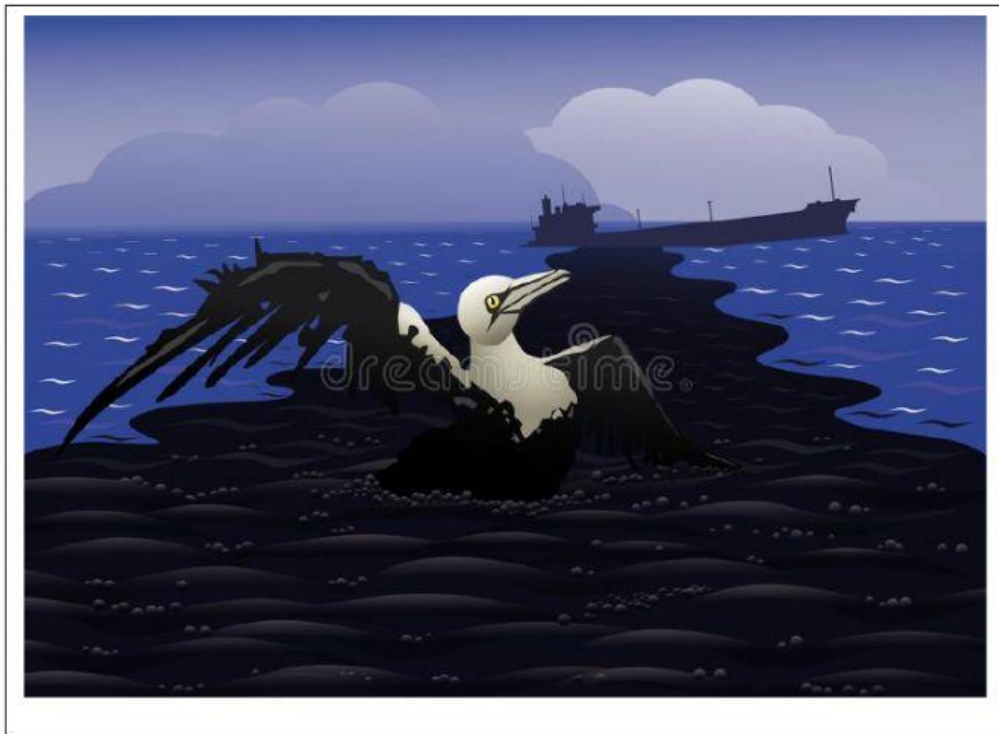
2- Fish and algae live in the  environment.

3- Sea  may kill sea animals.

4- A(n)  environment has lots of sand and rare plants.

**Exercise 4:**

**Observe document 1 and then answer the following questions.**



**Document 1: Oil Spill in the Sea**

a- **Name** the pollutant in document 1.

Household garbage

oil

sewage

b- **Indicate** who is responsible for the pollution of the sea.

animals

plants

humans

c- **Choose** "true" or "false".

1- Humans are not affected by the sea pollution.

True

False

