

UNIT 3. REPRODUCTION: lesson 1, 2 and 3.

1. Write the correct words to complete the sentences about reproduction.

- 1) _____ sex characteristics are the physical differences between the male and female reproductive _____.
- 2) _____ sex characteristics, such as facial hair, start appearing during a life stage called _____.
- 3) Human beings have _____ by sexual reproduction that involves the combination of female and male reproductive _____.
- 4) During _____, these cells join together and a _____ is formed.
- 5) The fetus grows inside its mother's _____ for about 9 months and it is expelled as a baby during _____.



fetus

secondary

organs

children

puberty

uterus

primary

fertilisation

birth

cells

2. Label the pictures related to reproduction.

female
reproductive cell

birth

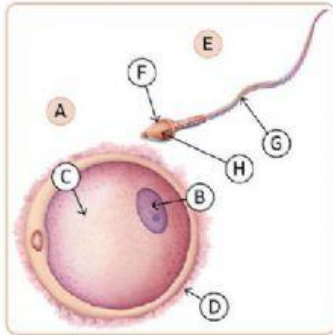
pregnancy

puberty

male reproductive
cell



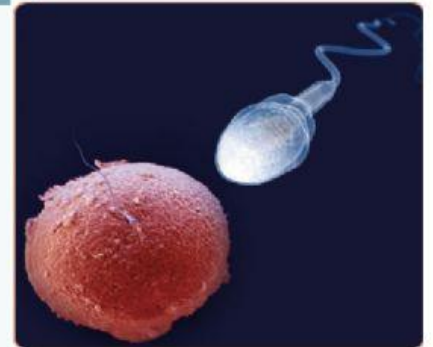
3. Look at the pictures and complete the words.



- A) e _ g _ c _ l l
 B) n _ c l e _ s
 C) c y t _ p l _ s m
 D) m _ m b r _ n e
 E) S p _ r _ c e l l
 F) h _ a _
 G) t _ i _
 H) n u _ l _ u s

4. Read the descriptions and choose the correct option.

- 1) Human reproductive cells are called .
- 2) The or female egg cell is round and much larger than a sperm cell.
- 3) A sperm cell or has a small head and a long tail which helps it to move around.
- 4) The female reproductive system has two , which start to release eggs during puberty.
- 5) An ovum is released every until a woman is between 45 and 55.
- 6) The male reproductive system has two that produce millions of sperm cells since puberty.



5. Write the correct words to complete the sentences.

- 1) The _____, which are on each side of the uterus, are two almond shaped organs that produce egg cells.
- 2) The egg cell travels along the _____ that connect the ovary with the uterus.
- 3) The _____ is a hollow organ with muscular walls, where a fertilised egg cell develops into a fetus.
- 4) The _____ is the narrow part of the uterus that leads to the vagina.
- 5) The _____ is a muscular canal that leads from the vulva to the uterus.

