

# TEMPO MARKINGS

Tempo markings are used to indicate how fast a song, piece or passage is to be played. The following words are the most commonly used tempo markings.

**Adagio** = very slow    **Andante** = slow;    **Moderato** = moderate;

**Allegro** = fast, lively

**Vivace** = very fast

Tempo markings appear above the first measure of the music.



Sometimes the tempo is indicated using **metronome** markings. A metronome is a mechanical device which sounds exact beats at any given tempo or speed. The markings appear as follows:



In this case, the quarter note pulse will equal the corresponding number on the metronome. When a quarter note equals "120", it means that a quarter note would be played 120 times in one minute.

The following words are also related to tempo markings. They usually effect the music for shorter periods of time.

**Ritardando** (rit. or rall.) = play gradually slower

**Accelerando** (accel) = play gradually faster.

**A Tempo** = play at the original tempo indicated; resume strict time

**Fermata** (♯) = pause or hold the note longer than its normal value

## ASSIGNMENT

1. Write the tempo markings for the following speeds.

fast \_\_\_\_\_ gradually getting faster \_\_\_\_\_

very slow \_\_\_\_\_ moderate \_\_\_\_\_

very fast \_\_\_\_\_ slow \_\_\_\_\_

gradually getting slower \_\_\_\_\_

2. A pause or hold in music is called a \_\_\_\_\_.

## Lesson 35

# ARTICULATION

In music, there are symbols used to indicate how notes are to be produced. These symbols are called **articulation signs**.

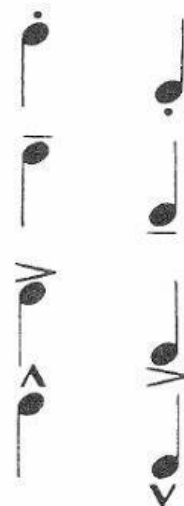
**Staccato:** detached or separate. It is indicated by placing a dot directly above or below the note.

**tenuto:** sustain for full value. This sign is indicated by placing lines directly above or below the note.

**Accent:** stress or emphasize. It is indicated by placing the following mark ( > ) above or below the note.

**Marcato:** a heavy accent. Indicated by placing the following mark ( ^ ) above the note.

**Slur:** to play in a smooth, connected style. It is indicated by a curve line above or below two to more notes.



## ASSIGNMENT

In the musical example below, identify the articulation signs. **Look inside the red box.**

- |          |          |
|----------|----------|
| 1. _____ | 4. _____ |
| 2. _____ | 5. _____ |
| 3. _____ |          |

