

Sensitivity

1. Fill in the correct sense.

SENSE	ORGAN
	eye
	ear
	nose
	tongue
	skin

2. Complete the sentences with the correct words.

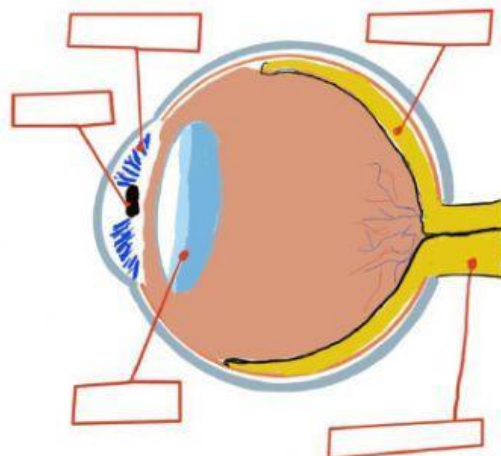
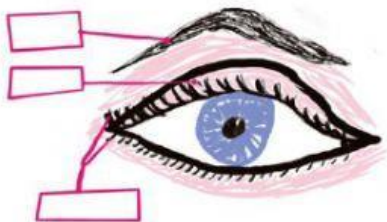
- The eyes are the sense organs of _____.
- The _____ are the sense organs of hearing.
- The nose is the sense organ of _____.
- Skin is the sense organ of _____.
- The _____ is the sense organ of taste.

3. Complete the table with the words.

flavours of food	eyes	light	hot or cold	ears	nose	sound
skin	smells		tongue			

	SMELL	TASTE	TOUCH	SIGHT	HEARING
The sense organ is ...					
It allows you to capture or identify...					

4. Label the parts of the eye.



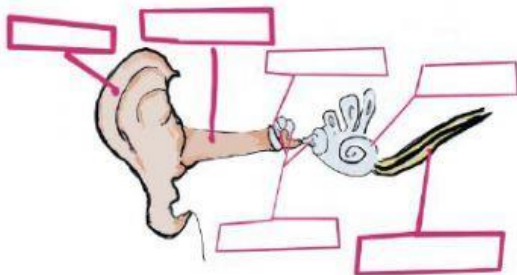
5. Match the parts of the eye to their function.

Pupil	carries impulses to the brain to create an image
Lens	captures light and produces an image
Retina	controls the amount of light that enters the pupil
Iris	light enters through the eye here
Optic nerve	helps the eye to focus the light

6. Use the words from exercise 5 to fill in the gaps then number the sentences 1-4 to show the way the eye works.

- The _____ captures the light and produces an image.
- Light enters the eye through the _____. The _____ controls the size of the pupil.
- The information is sent to the brain through the _____.
- The _____ focuses the light as it enters.

7. Label the parts of the ear.



8. Read and complete the sentences.

The _____ captures sound.
 Sound vibrations travel along the _____.
 The _____ vibrates.
 The vibration of the eardrum moves the three _____.
 The sound then goes to the _____.
 The cochlea sends the sound through the _____ to the brain.

8. There are main three parts of the ear. Write the words in the correct place.

COCHLEA	PINNA	EARDRUM	AUDITORY NERVE	SMALL BONES
EAR CANAL				

OUTER EAR -----

MIDDLE EAR -----

INNER EAR -----

9. Choose the correct word.

- a. The **pinna / cochlea** captures the sound.
- b. The cochlea sends the sound through the **ear canal / auditory nerve** to the brain.
- c. The brain **interprets / vibrates** the information.

10. TRUE OR FALSE. (T/F)

- a. We use smell and touch to detect smells and flavours. ____
- b. We detect different smells with our eyes. ____
- c. We taste different flavours with our tongue. ____
- d. There are many small receptors on your tongue called taste buds. ____
- e. Taste buds can detect six different flavours. ____

11. Correct the FALSE statements.

- a.
- b.
- c.

12. Label the parts of the tongue where different flavours can be detected.

SWEET	SOUR	SALTY	BITTER	UMAMI
-------	------	-------	--------	-------



- 1. _____
- 2. _____
- 3. _____
- 4. _____
- 5. _____

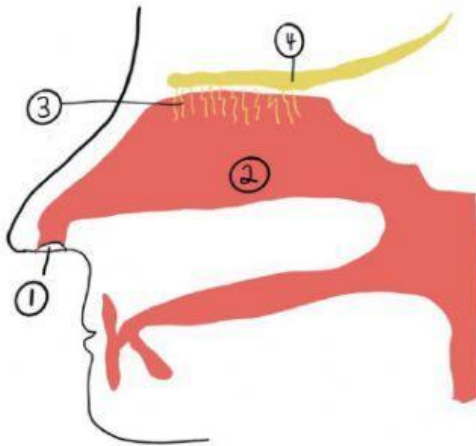
13. Match the two columns.

Nostrils	carries information about smells to your brain
Naval cavity	help you to detect smells
Olfactory epithelium	two holes in your nose
Olfactory nerve	the space in your head behind your nose

14. The **pinna / nostrils** capture smells.

15. Use the words in the box to label the parts of the nose.

olfactory nerve	nostrils	olfactory epithelium	nasal cavity
-----------------	----------	----------------------	--------------



1. _____

2. _____

3. _____

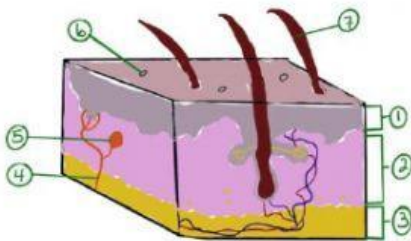
4. _____

16. The _____ is your organ of touch.

17. The skin is the **smallest / largest** organ in your body.

18. Label the parts of the skin.

EPIDERMIS	HYPODERMIS	DERMIS	NERVE	HAIR
	PORE		TOUCH RECEPTOR	



1. _____

2. _____

3. _____

4. _____

5. _____

6. _____

7. _____

19. Write the correct sense organ.

A. Touch receptor _____

B. Cochlea _____

C. Pupil _____

D. Taste buds _____

E. Iris _____

F. Auditory nerve _____

G. Nasal cavity _____

H. Small bones _____

20. Give advice to protect your eyes and ears. Put the sentences in the correct column.

Go to the doctor if you have earache Read in low light	Put objects in your ears Use sunglasses
---	--

DO	DON'T