

# You're a Mean One Mr. Grinch.

<https://www.youtube.com/watch?v=nytpYtLtHpE>

You're a mean one  
You really are a heel  
You're as cuddly as a \_\_\_\_\_  
You're as charming as an eel  
Mr. Grinch, you're a bad banana  
Mr. Grinch, with the greasy black peel

crocodile



You're a vile one  
You got \_\_\_\_\_ in your smile  
You have all the tender sweetness  
Of a seasick \_\_\_\_\_  
Mr. Grinch  
You're a foul one  
Friends you don't have none  
I wouldn't touch you with a 39-and-a-half foot pole!



monster

You're a \_\_\_\_\_  
Your heart's an empty hole  
You're a goner  
You got garlic in your soul  
You got \_\_\_\_\_ in your soul

garlic



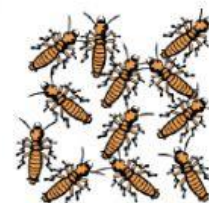
All them smiles homie  
I turn up the frown  
All them decorations  
I tear em down  
You can ask Max, I don't play around  
Ayo, eww

banana



Who is this mean fellow  
With his skin all green and his \_\_\_\_\_ all yellow? (Eww)  
What you so mad for?  
Halloween come around and we ain't knockin' at your door, mane

termites



Mr. Grinch you're a bad banana  
You're gonna spoil everybody with your bad attitude  
(Spoil everybody)

Mr. Grinch  
La-la-la-la  
Who is this mean fellow  
With his skin all green and his teeth all yellow?  
(La-la-la-la)  
What you so mad for?  
Halloween come around and we ain't knocking on your door  
(La-la)  
Bad \_\_\_\_\_



cactus

teeth

