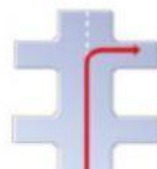
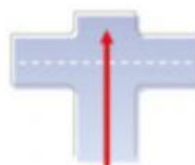
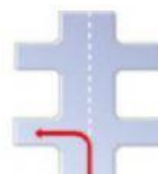
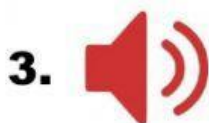
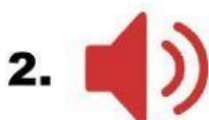
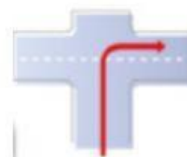


NAME: _____ GROUP: _____ DATE: _____

Asking for and giving directions

LISTEN TO THE AUDIOS. MATCH THEM WITH THE CORRECT PICTURES

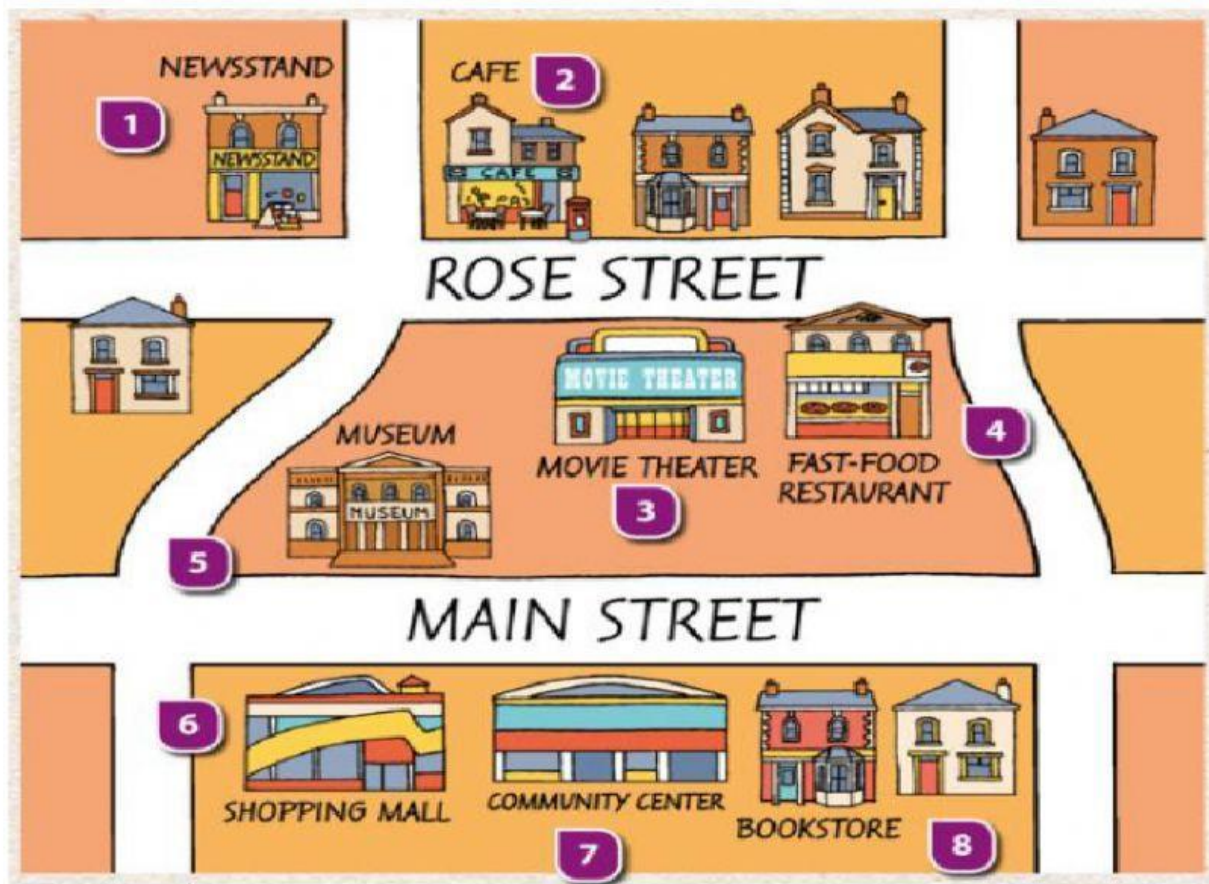


LOOK AT THE MAP AND WRITE THE CORRECT PREPOSITION OF LOCATION IN THE SENTENCES.



1. The cafe is _____ the post office.
2. The parking lot is _____ the library.
3. There is a traffic light _____ to the newsstand.
4. The shopping mall is _____ the fast-food restaurant and the movie theater.
5. The train station is _____ the department store.
6. The community center is _____ the park.

FOLLOW THE DIRECTIONS AND LOCATE THE MISSING PLACES IN THE MAP.



CONVERSATION 1

A: Excuse me, how can I get to Gino's Pizza?

B: Walk straight ahead Tulip Avenue and turn right on Rose Street. Gino's Pizza is on your right, between the cafe and the Ritz Hotel.

CONVERSATION 2

A: Excuse me, can you tell me the way to the library, please?

B: Of course, walk along on Sunflower Avenue, go past the museum and the library is just before you get to the corner of Sunflower Avenue and Rose Street..

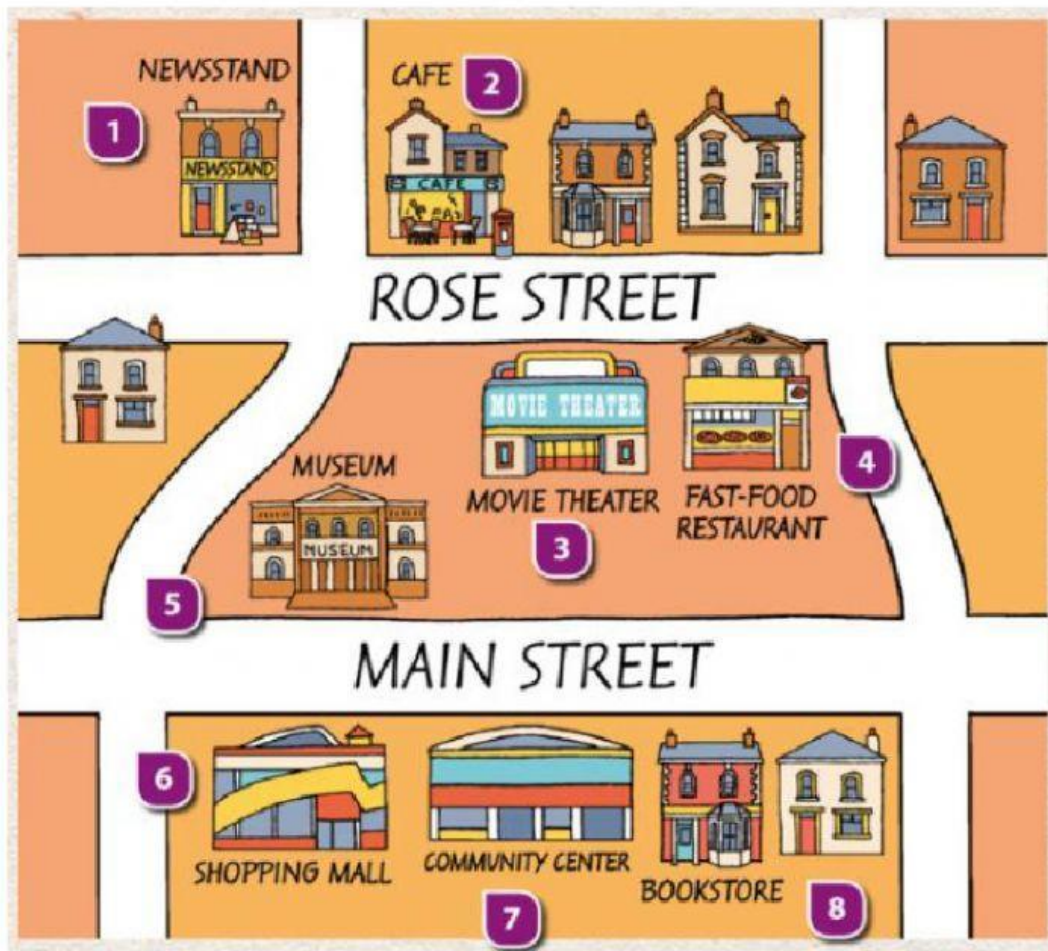
CONVERSATION 3

A: Excuse me, how can I get to the Candy store?

B: Walk straight ahead on Sunflower Avenue. Turn right on Rose Street. Walk along and go past Gino's Pizza and the hotel. The candy store is on the corner of Tulip Avenue and Rose Street.

LISTENING

GRANDPA IS VISITING HIS OLD TOWN BUT IT HAS A LITTLE CHANGED. LISTEN TO GRANDPA AND WRITE WHAT THE PLACES WERE IN THE PAST. IF THE PLACES STAY THE SAME JUST WRITE "NO CHANGES".



1. _____

5. _____

2. _____

6. _____

3. _____

7. _____

4. _____

8. _____