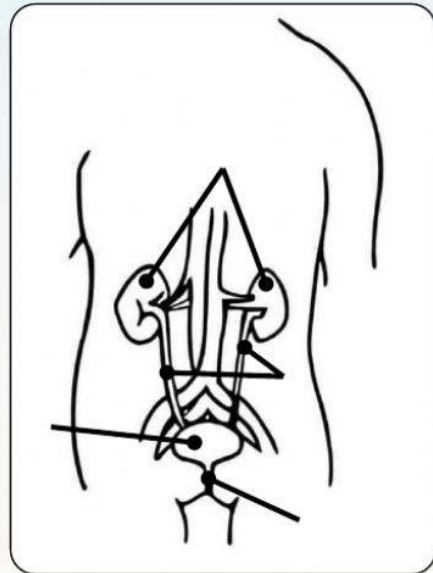
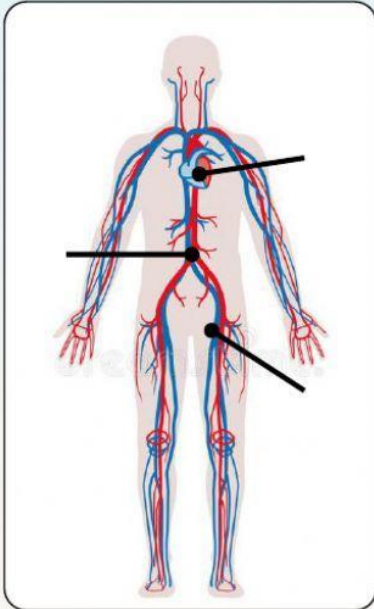
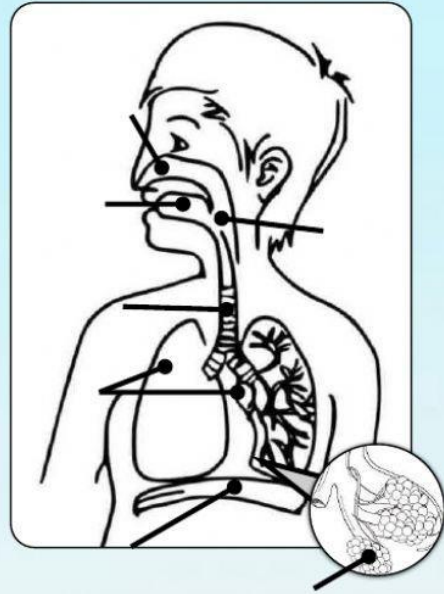
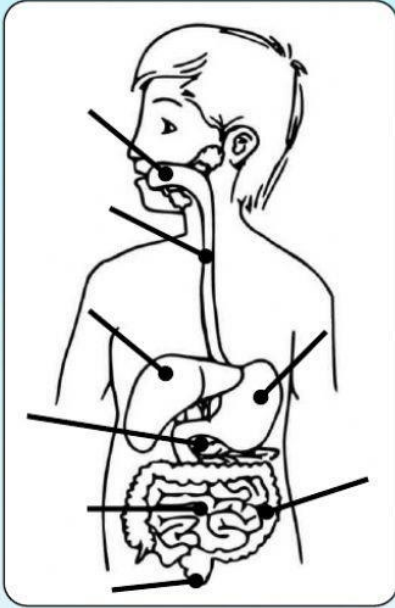
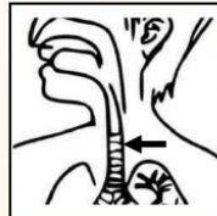
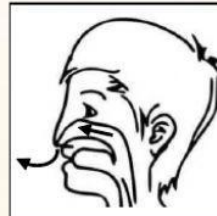
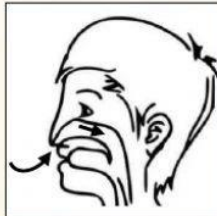
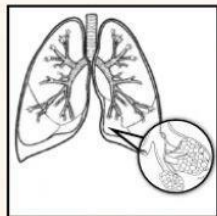
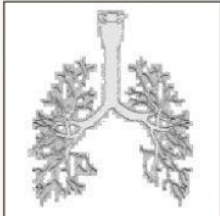


1 Write the name of the systems and label their organs.



2 Write, with numbers, what happens first. Then, drag each text to its picture.



Blank box for labeling the first diagram.

Blank box for labeling the second diagram.

Blank box for labeling the third diagram.

Blank box for labeling the fourth diagram.

Blank box for labeling the fifth diagram.

In the lungs, the oxygen passes to the blood and the carbon dioxide to the lungs through the alveoli.

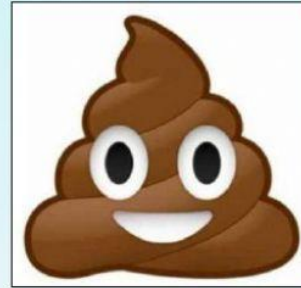
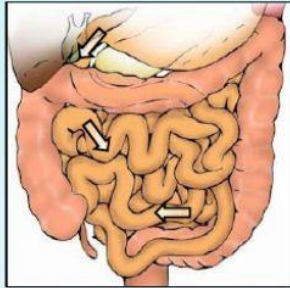
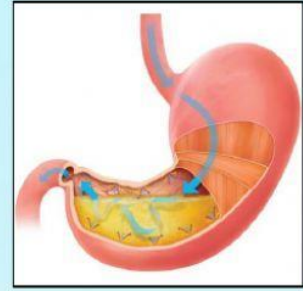
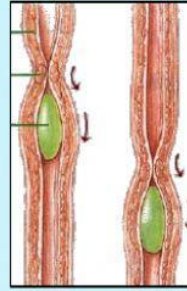
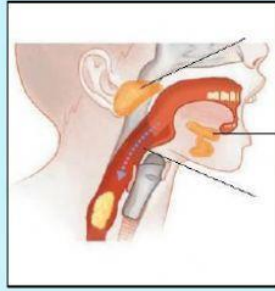
When we breathe out, we expulse carbon dioxide from our body.

The air passes to our lungs through the bronchi.

The air passes through the nasal cavity to the trachea.

When we breathe in, we take oxygen from the air.

3 Copy, below the picture, the correct sentence at the bottom.



- The large intestine absorbs water from the wastes and move the indigestible material to anus as feces.
- The food travels down through the oesophagus.
- The girl is eating a sandwich.
- In the stomach, the food is break down by acidic solutions.
- The anus expulses the feces out of our body.
- In the mouth, we chew the food to break up it.
- In small intestine, nutrients from food are absorbed.

4 Complete the sentences touching the correct word.

- When we *breathe in / breathe out* , we *take / expulse* oxygen.
- When we *breathe in / breathe out* , we *take / expulse* carbon dioxide.
- Our body eliminates *waste / nutrients* through the skin in the form of a liquid called *urine / sweat*.
- The *kidneys / bladder* is where the *urine / sweat* is collect and, when is full, leaves the body through the *urethra / ureters*.

5 Guess the organ.

Is where the blood is cleaning of waste.

Is where urine is collects.

Is what moves the blood.

Is a liquid that eliminates waste through the skin.

Is where the food is break down by acidic solutions.

Is where the food travels down to the stomach

Is where the water is absorbed from the wastes

6 Write *digestive, respiratory, circulatory* or *excretory*.

It expulses waste out of our body.

It separate nutrients from food.

It takes oxygen and expulses carbon dioxide.

Is where are the blood vessels.

It collects waste as carbon dioxide.

Is where are the alveoli.

Is where are the kidneys.

It chews the food to break up it.

7 Match each organ with its system.

Organs

Systems

Organs

Bronchi ●

● Large intestine

Kidneys ●

● Respiratory ●

● Heart

Small intestine ●

● Lungs

Alveoli ●

● Digestive ●

● Bladder

Urethra ●

● Trachea

Liver ●

● Circulatory ●

● Ureters

Stomach ●

● Veins

Oesophagus ●

● Excretory ●

● Pharinx

Arteries ●

● Pancreas

8 Complete the wordsearch.

A	L	V	E	O	L	I	W	U	K	C	Q	O	M
M	N	I	X	E	N	R	B	L	O	O	D	B	C
P	M	U	A	O	X	V	U	U	T	X	E	R	E
L	E	W	S	C	X	D	S	N	U	M	U	E	P
B	R	O	N	C	H	I	Y	G	T	V	V	A	S
L	B	E	Q	Z	J	S	K	S	W	E	A	T	T
A	Z	U	R	Q	H	P	E	C	X	I	M	H	O
D	U	R	E	T	E	R	S	D	M	N	T	E	M
D	T	C	L	Y	A	R	M	O	E	S	U	F	A
E	L	I	V	E	R	F	L	U	M	W	P	X	C
R	T	Q	U	O	T	R	A	C	H	E	A	L	H
U	R	E	T	H	R	A	L	X	M	I	U	L	Z
M	E	I	K	I	D	N	E	Y	S	F	P	Q	R

LIVER	VEINS
BREATHE	LUNGS
BRONCHI	ANUS
URETHRA	BLOOD
BLADDER	TRACHEA
ALVEOLI	KIDNEYS
STOMACH	SWEAT
HEART	URETERS