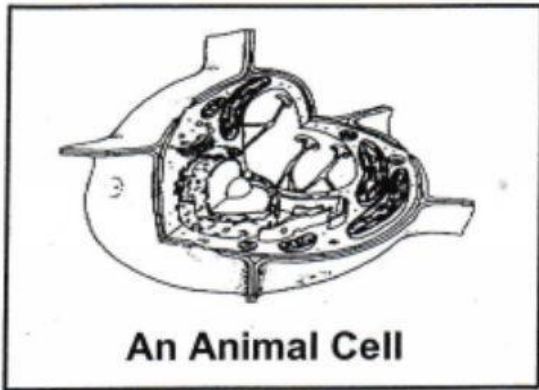
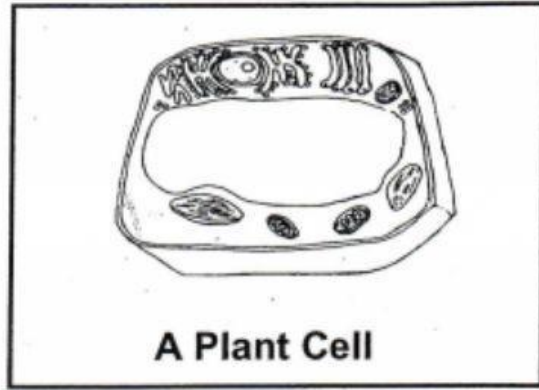


1. CELLS

The diagrams show two different types of cells.



An Animal Cell



A Plant Cell

(a). What is a cell?

[2]

(b). 'Cells must work together to perform basic life processes which helps to keep organisms alive.'

Name **TWO** life processes of cells.

(i) _____

[1]

(ii) _____

[1]

(c). 'All cells have a cell membrane.'

Name **TWO** materials that can pass through the cell membrane.

(i) _____

[1]

(ii) _____

[1]

[GO ON]