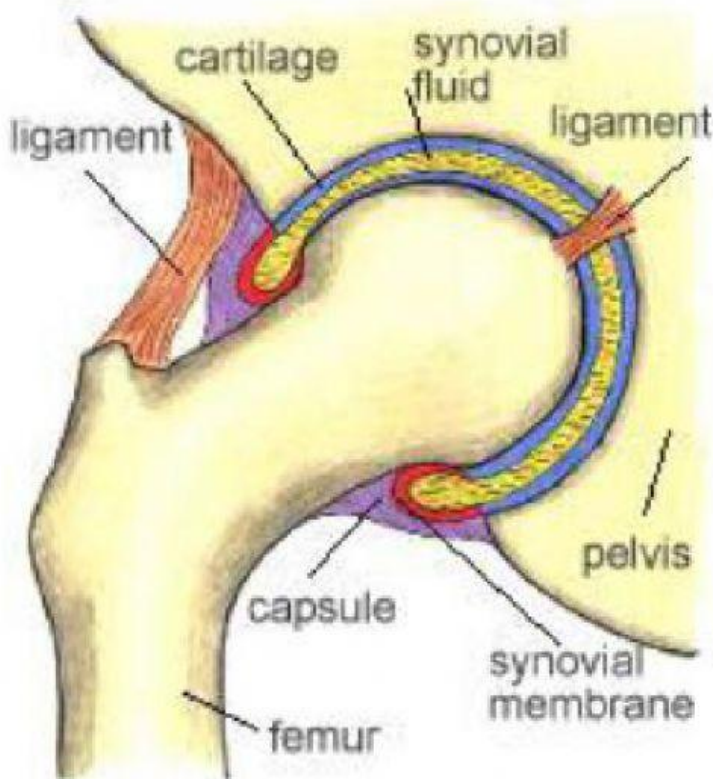


Joints - Card Sort

Cartilage	
Synovial membrane	
Synovial fluid	
Ligaments	
Tendons	



This acts as a shock absorber and stops the bones from rubbing together.

Tough tissue that hold the joints in place.

Inflexible tissue that attaches bone to muscle.

Encloses the synovial fluid.

This lubricates/oils the joints and makes movement easy.