

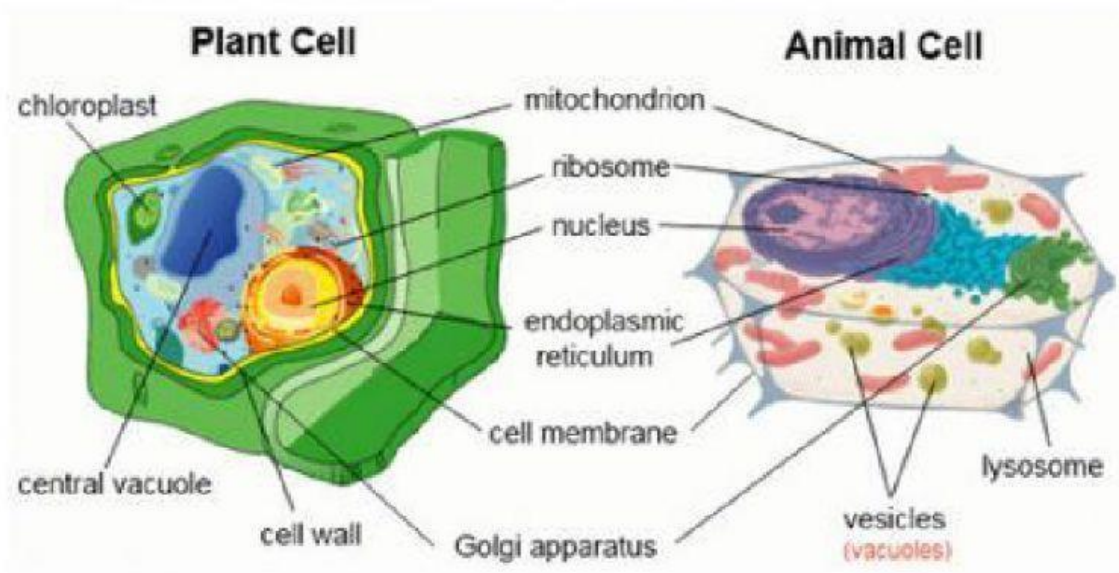
LIVE WORKSHEET

Plant Cells

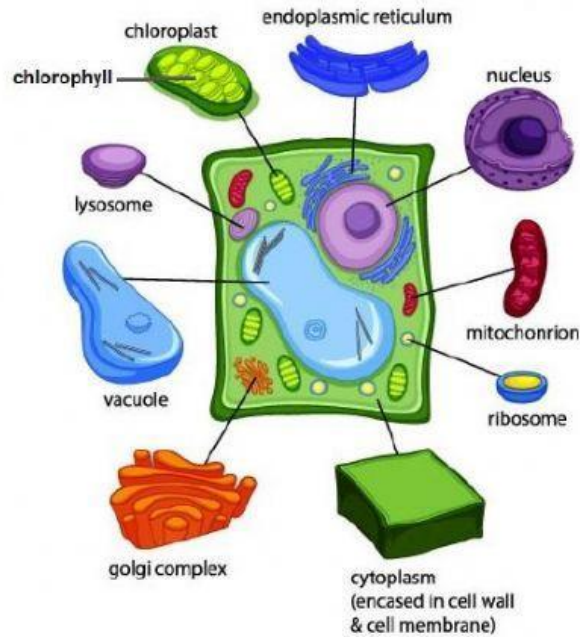
WATCH VIDEO!



What is in a plant cell but NOT in an animal cell?






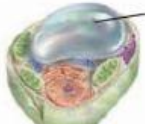








Parts of a Plant Cell



Fill in the Blanks

Organelles and Their Functions

	<input type="text"/> the organelle that contains the cell's DNA and is the control center of the cell		<input type="text"/> the organelle that uses the energy of sunlight to make food
	<input type="text"/> the organelle in which amino acids are hooked together to make proteins		<input type="text"/> the organelle that processes and transports proteins and other materials out of cell
	<input type="text"/> the organelle that makes lipids, breaks down drugs and other substances, and packages proteins for Golgi complex		<input type="text"/> the organelle that stores water and other materials
	<input type="text"/> the organelle that breaks down food molecules to make ATP		<input type="text"/> the organelle that digests food particles, wastes, cell parts, and foreign invaders
	<input type="text"/> a clear, gel-like material that fills the cell		<input type="text"/> a semi-permeable membrane that surrounds the cytoplasm and controls what leaves and enters a cell
	<input type="text"/> a rigid structure that surrounds plant and fungi cells and gives them shape		<input type="text"/> a pigment found in chloroplasts that traps sunlight and gives plants a green color