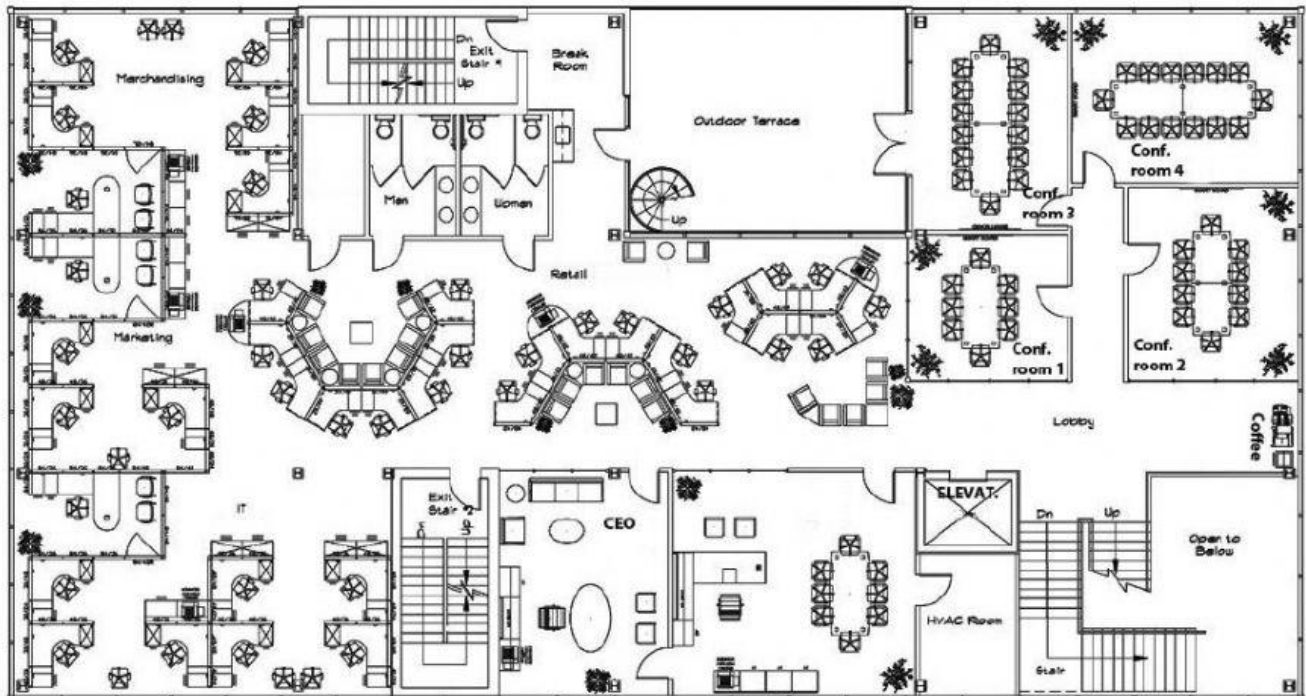


## A. Write the correct word(s) next to the description:

1. Small spoon t \_\_\_\_\_
2. In the US, it's the first floor g \_\_\_\_\_ (2 words)
3. A person who works in a company e \_\_\_\_\_
4. Room where you make food k \_\_\_\_\_
5. The first place visitors go to when they visit an office building r \_\_\_\_\_
6. Room where you store your product s \_\_\_\_\_
7. Building where we keep lots of products w \_\_\_\_\_
8. Person in charge of a company C \_\_\_\_\_ (3 words)
9. Person who hires or fires employees H \_\_\_\_\_ (3 words)
10. Person who looks after the company's computers H \_\_\_\_\_ (3 words)
11. Person who manages the company's money F \_\_\_\_\_ (2 words)
12. Person who deals with customers' complaints C \_\_\_\_\_ (3 words)
13. Where you park your car c \_\_\_\_\_ (2 words)



## B. Explain how to get from the elevator to:

1. Conference room #3
2. The CEO's office
3. Merchandising
4. Women's toilet

## C. Choose (click on) the correct word(s):

Franco Martínez *are / is* the CEO of Webplan, and it is *a / the* successful internet company. Webplan *employs / employer* 5,000 people in Asia and Europe. Mr Martínez *always / does* arrives in the office at 8am. He has a glass of water because he *not / doesn't* drink tea or coffee. Then he *read / reads* his emails. He has a meeting with *a / the* marketing department at 10am every day.

He doesn't often *has / have* lunch. He has a sandwich at his desk. In *the / an* afternoon he meets the design team. The employees at Webplan never *don't work / work* after 6pm.

D. Complete the information with these phrases (drag and drop)

It employs	It's a	It's based in	It sells
The company is called		It has offices in	
1. _____		Raven Ltd.	
2. _____		Bristol, in the UK.	
3. _____		Europe and the USA.	
4. _____		retail company.	
5. _____		clothes.	
6. _____		120 people.	

E. Looking at the office plan in exercise B, can you describe the company's structure? Write an email to a potential client with the description. You can use invented names.

F. Si necesitas más espacio para el ejercicio B, hazlo aquí: