



Name and Surname:.....

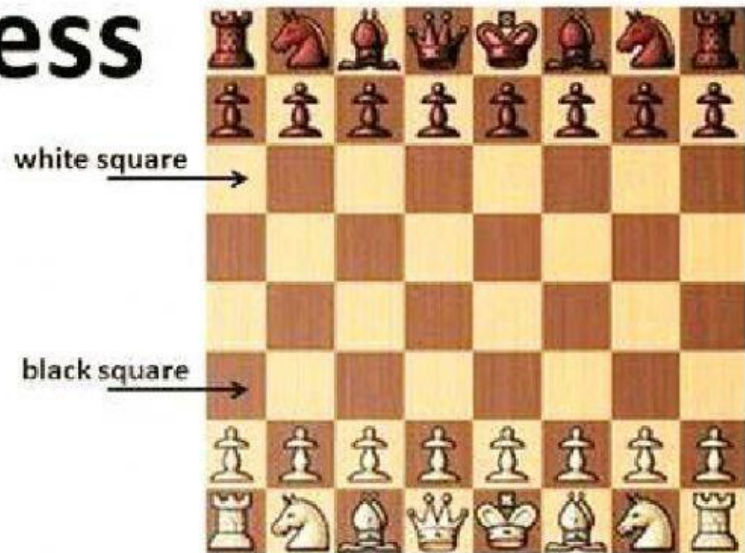
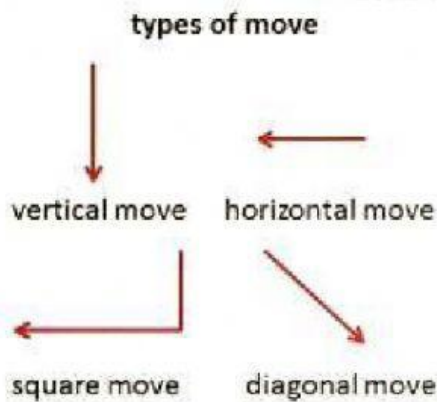
Date:..... Grade:.....

- Complete the text:

<b>PAWN</b>	<b>ROOK</b>	<b>KING</b>	<b>QUEEN</b>
	<b>KNIGHT</b>	<b>BISHOP</b>	

<p>CAN ONLY MOVE ONCE EXCEPT WHEN IT MAKES ITS FIRST MOVE AND THEN IT CAN MOVE 2 TIMES</p> <p>CAN ONLY GO FORWARD AND CAPTURE</p> <p>DIAGONALLY</p>		
<p>ONLY PIECE THAT CAN JUMP OVER ANOTHER</p>		<p>MOVES IN AN L SHAPE: 2 UP 1 LEFT OR RIGHT-OR-1 UP 2 LEFT OR RIGHT</p> <p>CAN ONLY CAPTURE WHEN JUMPING IF LANDS ON SQUARE WITH ENEMY</p> 
 	<p>a BISHOP MAY ONLY MOVE DIAGONALLY AND CAN MOVE AS FAR AS ITS LINE OF SIGHT</p>	
<p>a ROOK MAY ONLY MOVE STRAIGHT AND CAN MOVE AS FAR AS ITS LINE OF SIGHT- BE IT FORWARD/BACKWARD, LEFT/RIGHT</p>		
 	<p>CAN MOVE AND CAPTURE ON ANY SQUARE IN LINE OF SIGHT</p> <p>SHE CAN MOVE ON THE STRAIGHTS AND ON THE DIAGONALS</p>	
<p>RESTRICTED TO ONE MOVE PER TURN-CAN MOVE IN ANY DIRECTION - STRAIGHTS OR DIAGONALS</p> <p>MAY CAPTURE IN ANY DIRECTION THAT'S WITHIN ITS LEGAL MOVE RANGE</p>		

# Chess



King's side

Queen's side



Read and say true or false:

1. The knight can move diagonally.
2. The King can move in any direction.
3. The Bishop can't move forwards.
4. The Queen can move <sup>o</sup> straight or diagonally.

T	F
T	F
T	F
T	F

Order the sentences:

A	move	diagonally	Bishop	only	Can

direction	A	king	can	capture	in	any