

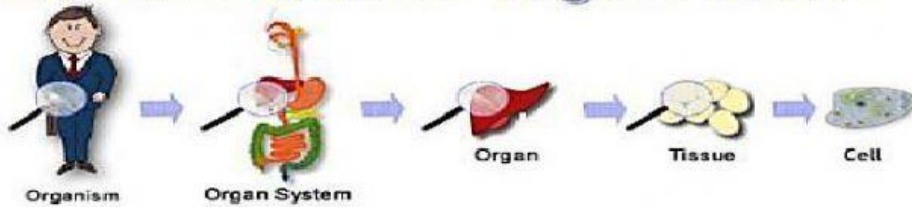
# Body systems test Review

Grade level: \_\_\_\_\_

Last Name: \_\_\_\_\_ First Name: \_\_\_\_\_ Period: \_\_\_\_\_ Date: \_\_\_\_\_

## Part I

### Levels of Cellular Organization



1. Write the "levels of cellular Organization (start with the cell)"



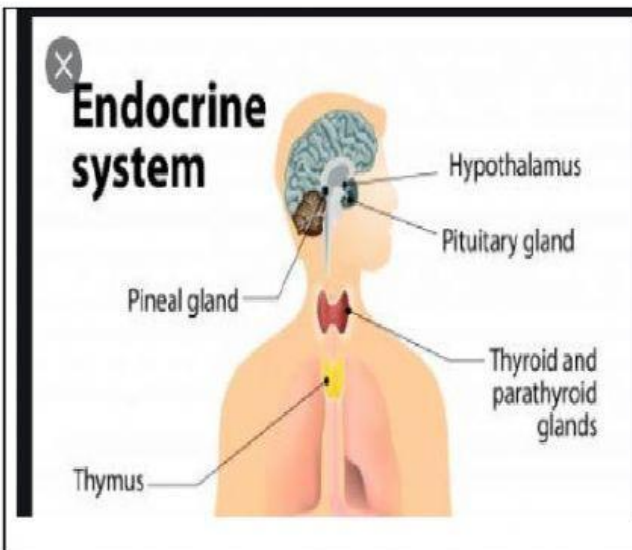
## Part II

Basic Function	
Body System	Function
Integumentary	Protection from outside elements
Muscular	Movement
Skeletal	Structure & Support
Circulatory	Transport nutrients & gases
Respiratory	Gas exchange
Digestive	Breakdown food & remove solid waste
Excretory	Filter blood & remove liquid waste
Nervous	Control through electrical signals
Endocrine	Control through hormones
Reproductive	Make life
Lymphatic (Immune)	Fight foreign particles/infections

2. Use the above chart to complete the table  
 Questions are not in the same order

Nervous	
Digestive	
Integumentary	
Muscular	
Circulatory	
Skeletal	
Lymphatic (Immune)	
Endocrine (pituitary gland)	
Reproductive	
Nervous	
Excretory	
Respiratory	

Part III

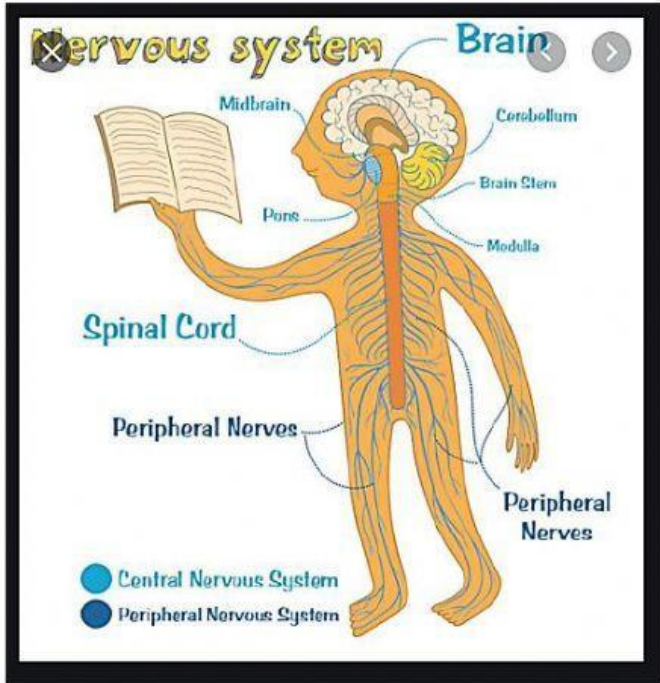


3. List 5 gland of the Endocrine system.

- \_\_\_\_\_
- \_\_\_\_\_
- \_\_\_\_\_
- \_\_\_\_\_
- \_\_\_\_\_

4. Which system the pituitary gland belongs to \_\_\_\_\_

## PART IV



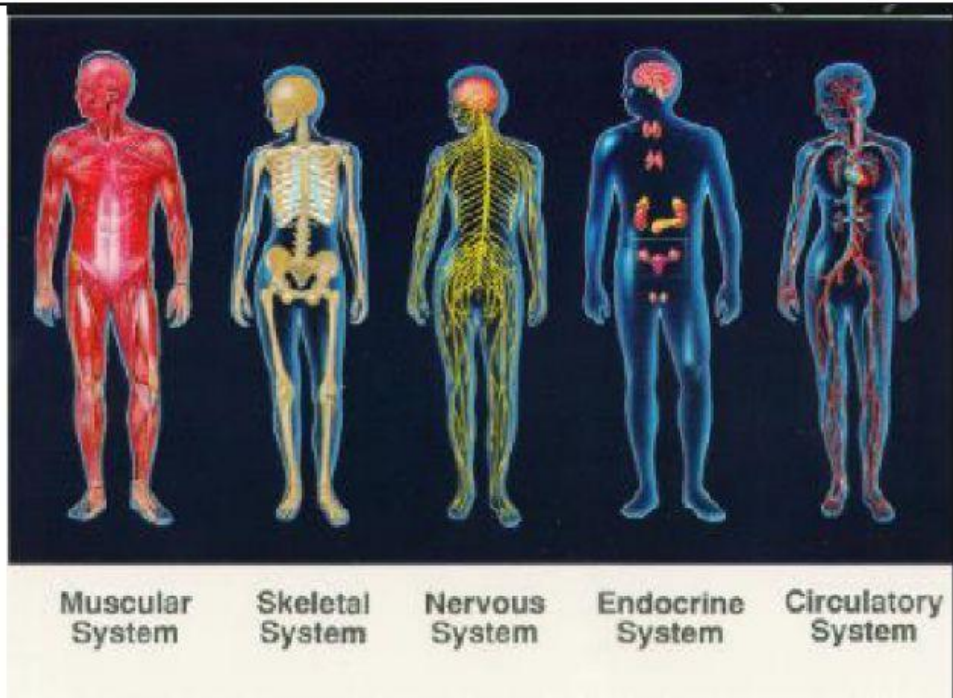
### 5. List 8 parts of the Nervous System

- \_\_\_\_\_
- \_\_\_\_\_
- \_\_\_\_\_
- \_\_\_\_\_
- \_\_\_\_\_
- \_\_\_\_\_
- \_\_\_\_\_
- \_\_\_\_\_

### 6. The spinal cord, nerves and brain belongs to which system?

\_\_\_\_\_

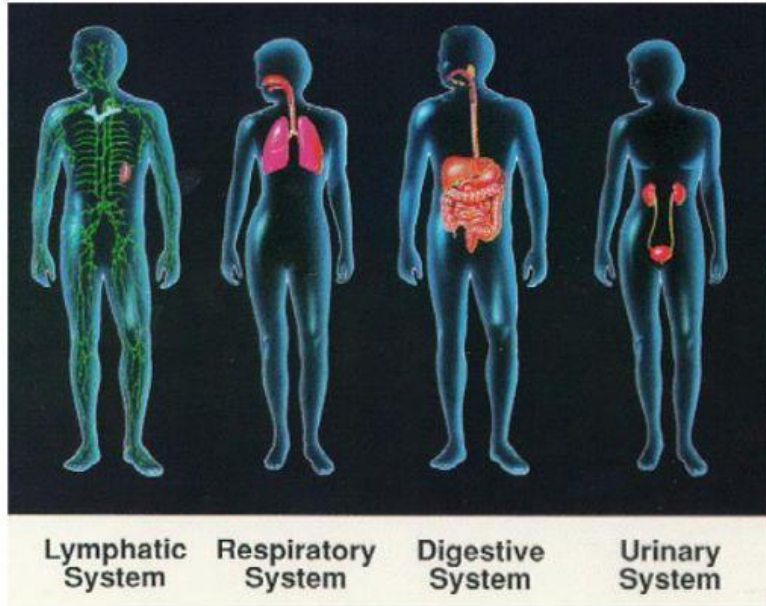
## Part V



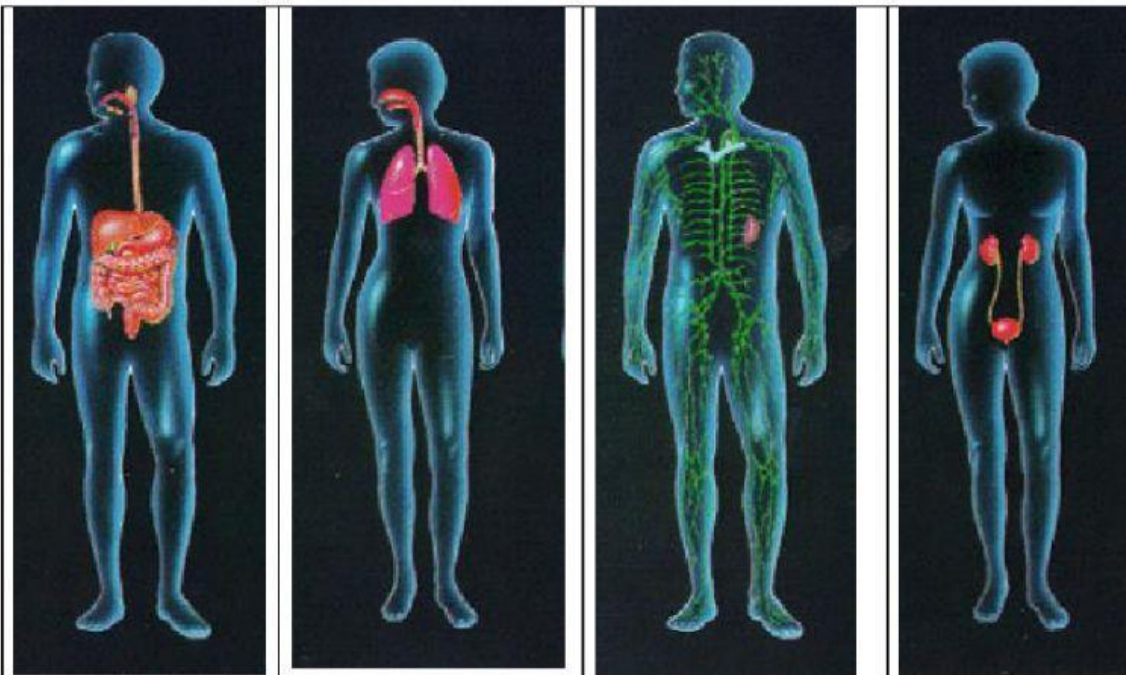
**7. Name the body systems**

<input type="text"/>	<input type="text"/>	<input type="text"/>	<input type="text"/>	<input type="text"/>

## Part VI

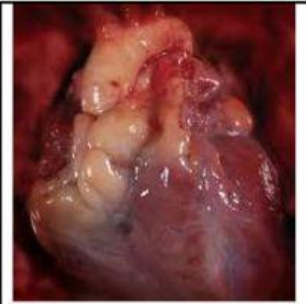


### 8. Name the body systems



## Part VII

The human **heart** is an organ that pumps blood throughout the body via the circulatory system, supplying oxygen and nutrients to the tissues and removing carbon dioxide and other wastes. Mar 22, 2016



### Complete

The \_\_\_\_\_ heart is an organ that \_\_\_\_\_ blood throughout the body via the \_\_\_\_\_ system, supplying \_\_\_\_\_ and \_\_\_\_\_ to the \_\_\_\_\_ and \_\_\_\_\_ carbon \_\_\_\_\_ and other \_\_\_\_\_.