

## RESPIRATORY SYSTEM

IDENTIFYING WITH THE RESPIRATORY SYSTEM, INTERESTING FACTS AND PARTS AND FUNCTIONS OF THE RESPIRATORY SYSTEM:

**How many breaths do you think you take in a year?**

**YOU TAKE:**

**12-20 BREATHS IN A MINUTE**

**720-1,200 BREATHS IN ONE HOUR**

**17,280-28,000 BREATHS IN ONE DAY**

**6,307,200-10,293,000 BREATHS IN ONE YEAR.**

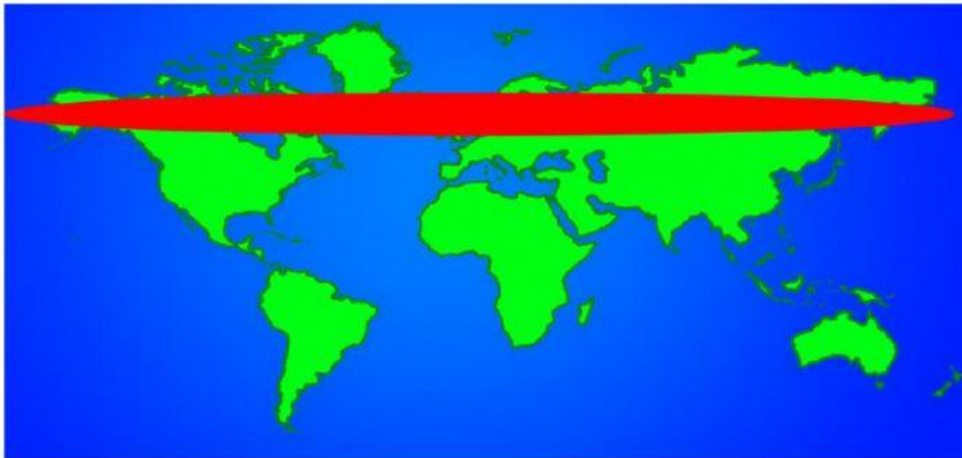
**THAT'S A LOT OF OXYGEN!**

**WHERE DO WE GET ALL OF OUR OXYGEN FROM?**

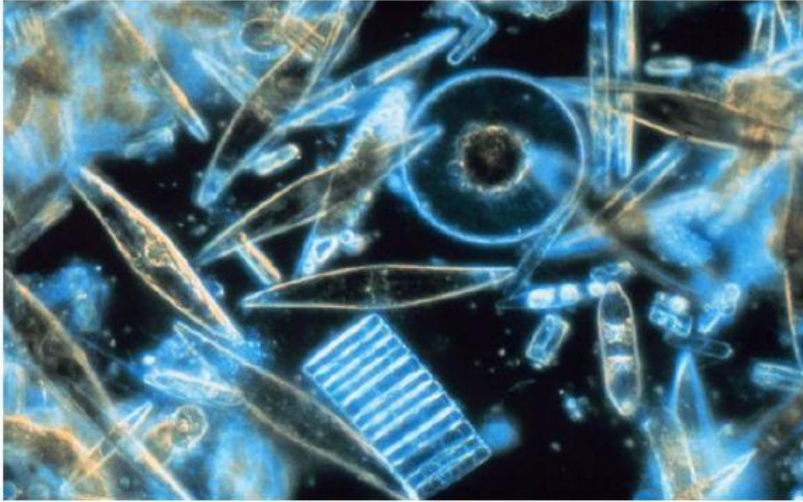
**30% of our oxygen comes  
from trees and plants.**



## **The Taiga Forest**

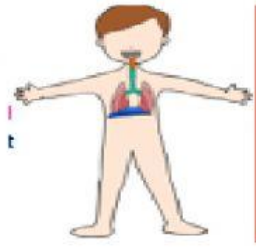


**Roughly 70% of our oxygen comes from phytoplankton in the oceans.**



**How do we use oxygen to help us live?**





## THE RESPIRATORY SYSTEM:

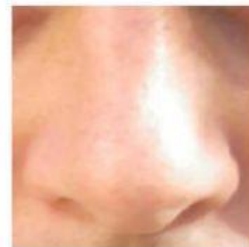
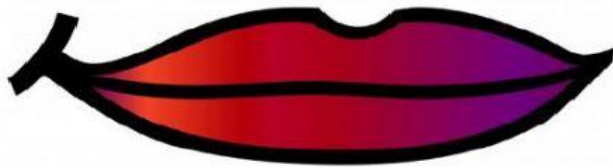
The **organs** that allow a person to **breath**.

The primary **function** of the respiratory system is to supply the **blood** with **oxygen**.

So THAT THE OXYGEN CAN TRAVEL THROUGHOUT THE BODY.

### Step 1: Nose & Mouth

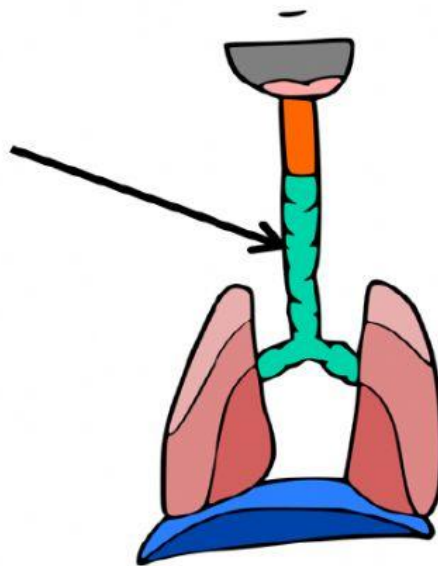
- You **inhale** air into your **nose** or **mouth**.





## Step 2: Trachea

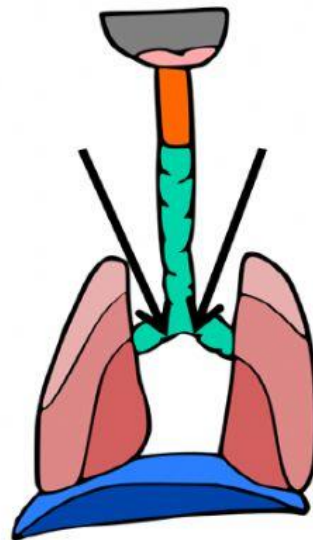
- **Air** travels into your **trachea**.
- Trachea = **windpipe**.
- **Filters** the air we breath.

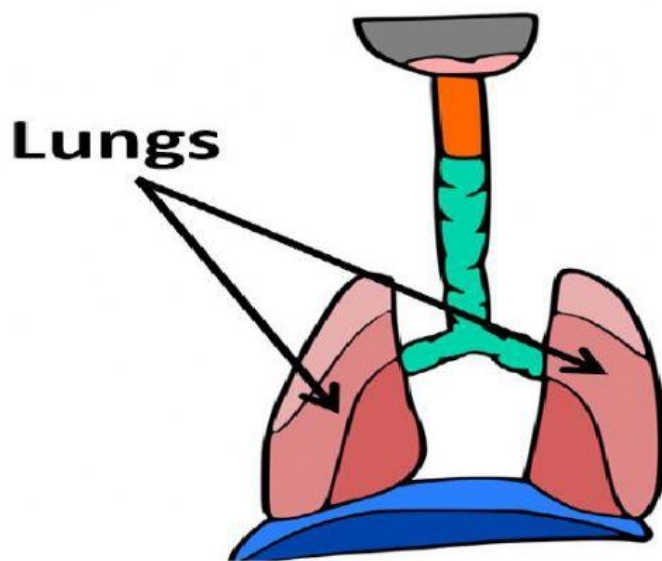


---

## Step 3: Bronchi

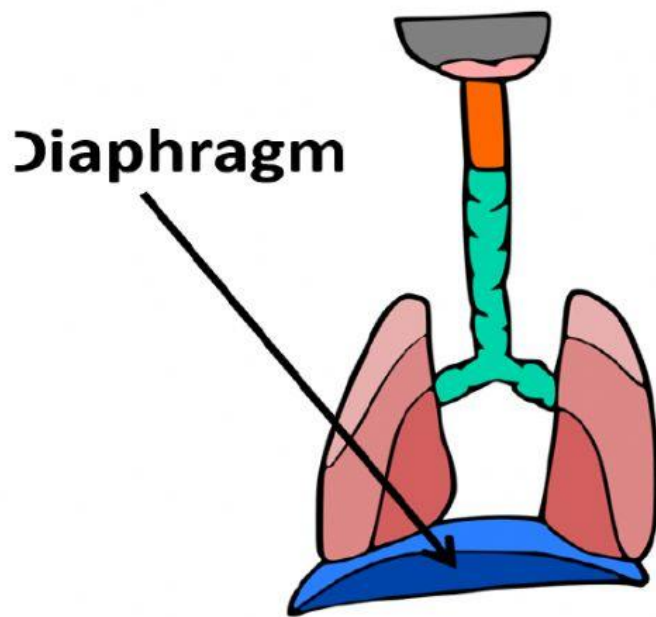
- The bronchi are **two air tubes** connected to the **trachea**.
- The bronchi **carry** air directly into the **lungs**.





### Step 4: Lungs

- **Main** organs of the respiratory system.
- **Red** blood cells **pick** up the **oxygen** in the lungs and carry it to all the **cells** in the body.
- Once the blood cells drop off the **oxygen**, they pick up **carbon dioxide** (waste) from the body cells and bring it back to the **lungs**.
- The lungs breathe **out** the carbon dioxide.



## The Diaphragm:

- **Muscle** at the bottom of the **lungs**.
- **Starts** the breathing process.
- When you breathe **in**, diaphragm **flattens**, filling up **lungs**.
- When you breathe **out**, diaphragm **expands**, forcing air **out**.

## **What is the main purpose of the Respiratory System?**

- A – To supply carbon dioxide to the blood.**
- B – To exhale carbon dioxide for the trees.**
- C – To supply oxygen to the blood.**
- D – To exhale oxygen for the trees.**

## **Which organ is also known as the “windpipe”?**

- A – Diaphragm**
- B – Lungs**
- C – Bronchi**
- D – Trachea**

**Humans breathe in \_\_\_\_\_ and breathe out \_\_\_\_\_.**

- A – Nitrogen, Carbon Dioxide**
- B – Carbon Dioxide, Nitrogen**
- C – Oxygen, Carbon Dioxide**
- D – Carbon Dioxide, Oxygen**



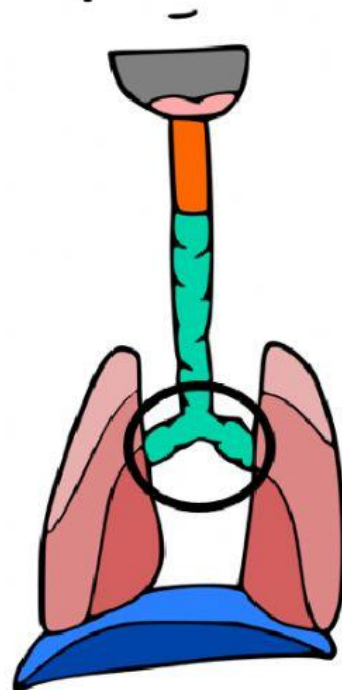
**Which organ matches the picture?**

**A – Trachea**

**B – Bronchi**

**C – Lungs**

**D – Diaphragm**



**What carries oxygen throughout the body?**

**A – Lungs**

**B – Red blood cells**

**C – White blood cells**

**D – Diaphragm**