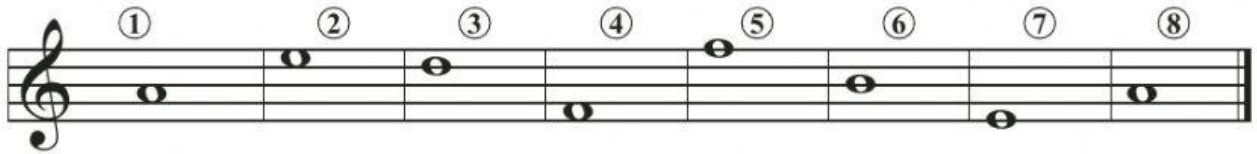


## Revision

Use the song below to answer the questions that follow.



1. What is the clef used in the song? \_\_\_\_\_
2. How many measures are in the song?
3. What is the name of the 2 lines found at the end of the song?
4. Write the letter name of the lowest note found in the song. \_\_\_\_\_
5. Write the letter name of the highest note found in the song.
6. Select the third (3rd) measure in the song.
7. Select the sixth (6th) measure in the song.
8. Write the letter name of the notes found in the following measures:  
measure 2: \_\_\_\_\_  
measure 4: \_\_\_\_\_  
measure 7: \_\_\_\_\_