

2020-2021 Educational Year, Potpori Revision of 2nd Unit (My town) for 5th Grade Students

Name, surname :

Class / Number :

1. Match the correct words with the pictures. (2 points each.)

A. Town	B. Turn right	C. Museum	D. Cross the street	E. Cinema	F. Pool
G. Bakery	H. School	I. Pharmacy	J. Library	K. Turn left	L. Bus stop



1-



2-



3-



4-



5-



6-



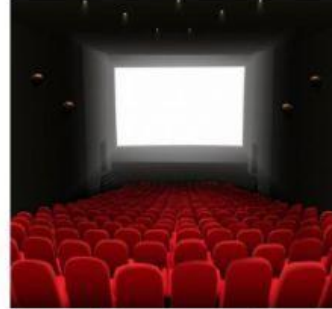
7-



8-



9-



10-



11-



12-

2. Match the sentences with their meanings. (2 points each.)

1. Take the first right.	A. O kitap dükkanındadır.
2. She is at the bookshop.	B. Çok teşekkür ederim.
3. Thank you so much.	C. Ben kasabamı seviyorum.
4. I love my town.	D. Okulda öğretmenlerini dinlersin.
5. You listen to your teachers at the school.	E. İlk sağdan git.

1

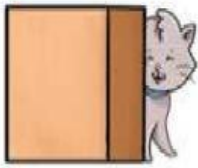
2

3

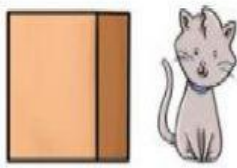
4

5

3. Match the pictures with the sentences. (4 points each.)



A



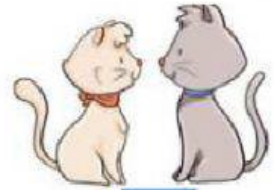
B



C



D



E

1. The cat is in front of the box.

2. The cat is opposite the other cat.

3. The cat is behind the box.

4. The cat is between the boxes.

5. The cat is next to the box.

4. Put the sentences into correct places of conversation. (4 points each.)

A- It is next to the toyshop.

B- I'm playing with my friends.

C- turn left

D- I'm at the library.

Memo: Hi, Pelinsu. How are you doing?

Pelinsu: Hello, Memo. I'm great. What about you?

Memo: I'm Ok. Thanks. Where are you now?

Pelinsu: I'm reading a book. 1- _____. Where are you?

Memo: 2- _____. I'm at the park.

Pelinsu: Nice. Park? Where is it?

Memo: 3- _____.

Pelinsu: How can I go there from the school?

Memo: Go straight ahead and 4- _____.

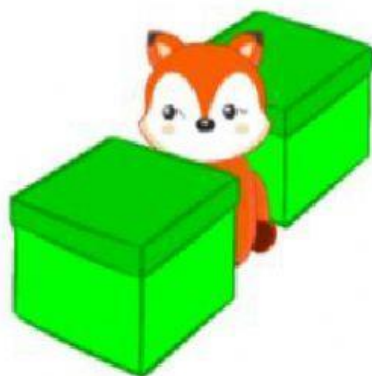
Ramazanceylan.eft

5. Match the questions with the correct answers. (3 points each.)

1.	Do you like your town?	A.	No, I'm not. I'm at the school.
2.	How can I get to the bakery?	B.	She is at the hospital.
3.	Are you at home?	C.	Of course. I love it.
4.	Where is she?	D.	Take the second left and turn right.

1		2		3		4	
---	--	---	--	---	--	---	--

6. Choose the correct options. (3 points each.)



1

- A. Opposite
- B. Behind
- C. Next to
- D. Between



2

- A. Fire station
- B. Restaurant
- C. Train station
- D. Barbershop



3

- A. Turn right
- B. Go straight ahead
- C. Turn left
- D. Cross the street



4

- A. Book
- B. Movie
- C. Bread
- D. Bus



5

- A. Mosque
- B. Pharmacy
- C. Bank
- D. Post office



6

- A. Behind
- B. Opposite
- C. Next to
- D. In front of

LET'S HAVE FUN

7. Guess the words and complete the puzzle.

