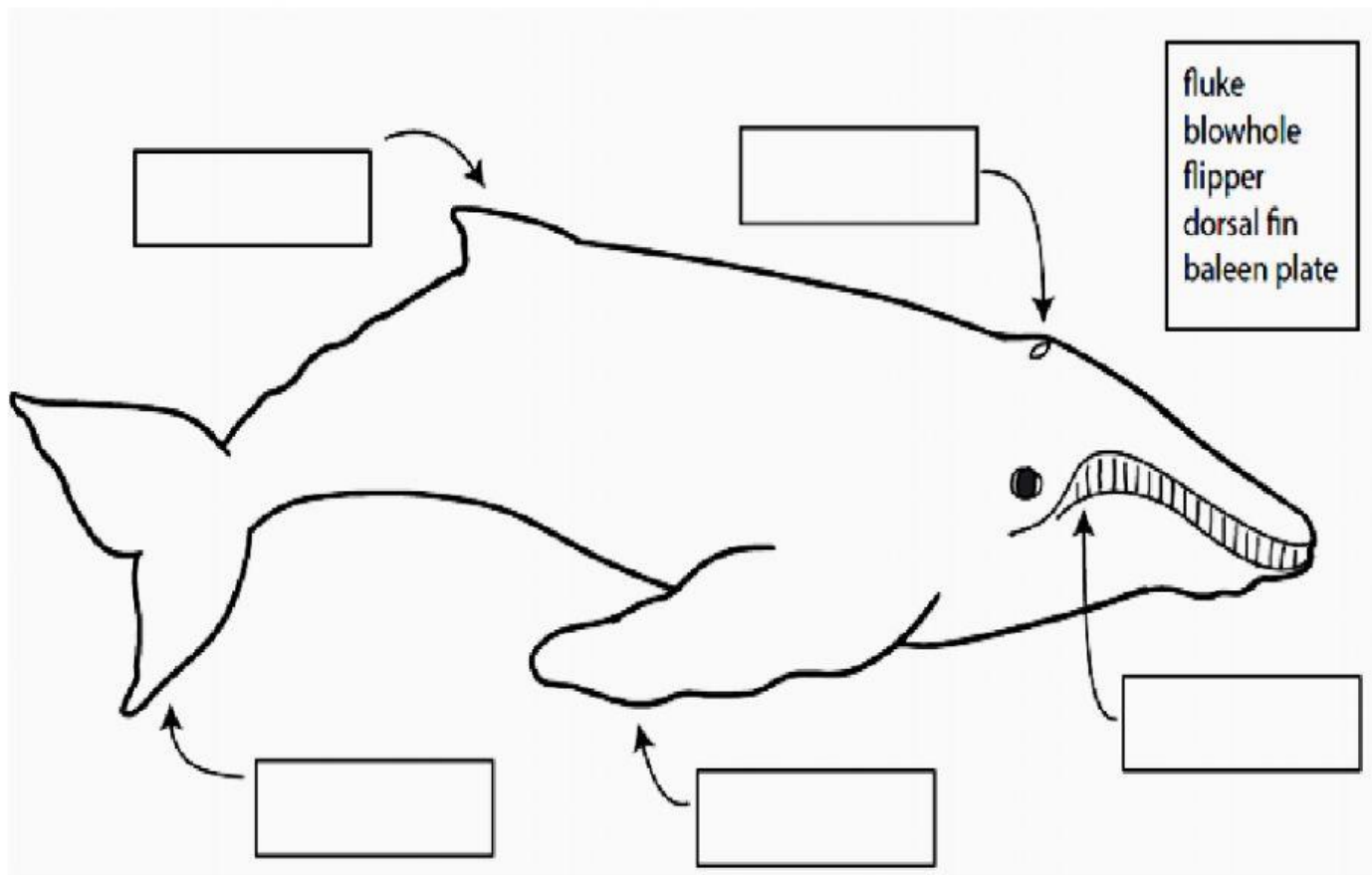




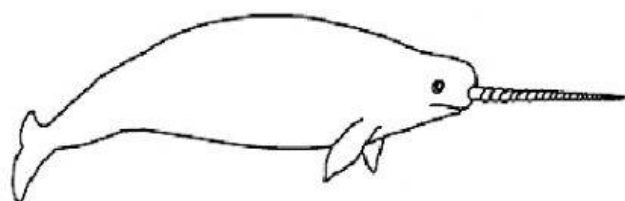
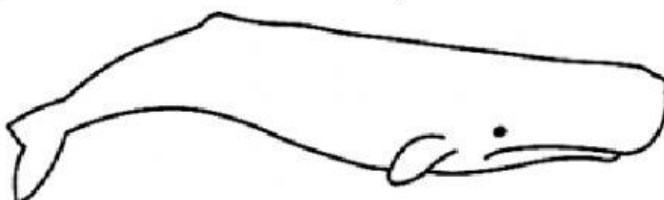
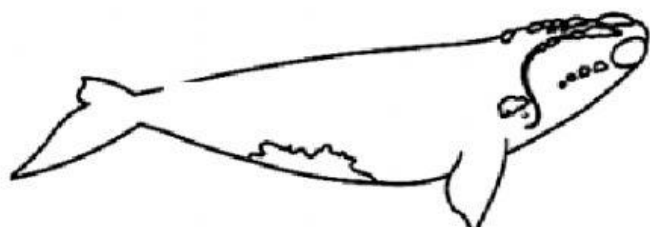
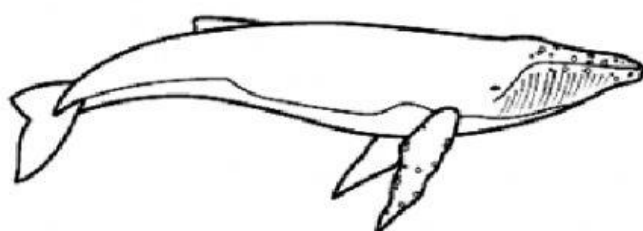
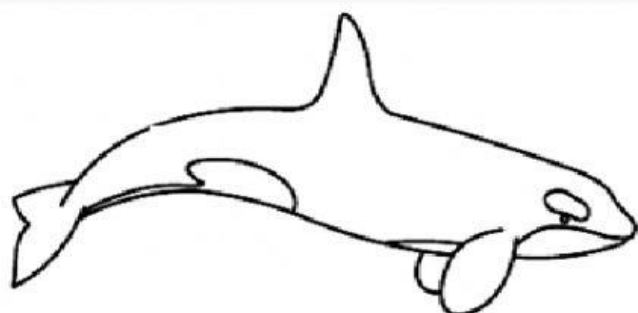
NAME: TOPIC: COURSE:

I. CHOOSE TRUE OR FALSE.

1. Whales are fish
2. All the whales have teeth
3. Whales are mammals
4. Whales lived on land before they went to life in the ocean
5. All the whales use echolocation
6. Orcas are whales
7. The blue whale is the smallest in the ocean
8. The narwhal is a baleen whale
9. There are two groups of whales: baleen and toothed
10. The sperm whale has the sperm in its head

II. WRITE THE CORRECT LABELS ON THE PICTURE:

III. CHOOSE THE CORRECT NAME FOR THE WHALE.



IV. CHOOSE THE BEST ANSWER.

1

What's the largest animal on Earth?



- ☐ Sperm whale
- ☐ Blue whale
- ☐ Whale shark

2

What do baleen whales lack that other whales have?



- ☐ Blowholes
- ☐ Teeth
- ☐ Eyes

3

How do whales swim or propel themselves forward in water?



- ☐ In addition to moving tails up and down whales can also use flippers and buoyancy to move forward as they sink
- ☐ Whales move their tails up and down to move forward in the water unlike other fish.
- ☐ Whales move their tails back and forth to move forward in the water similar to other fish.

4

How does a whale manage to breathe in the water, since it is a mammal?

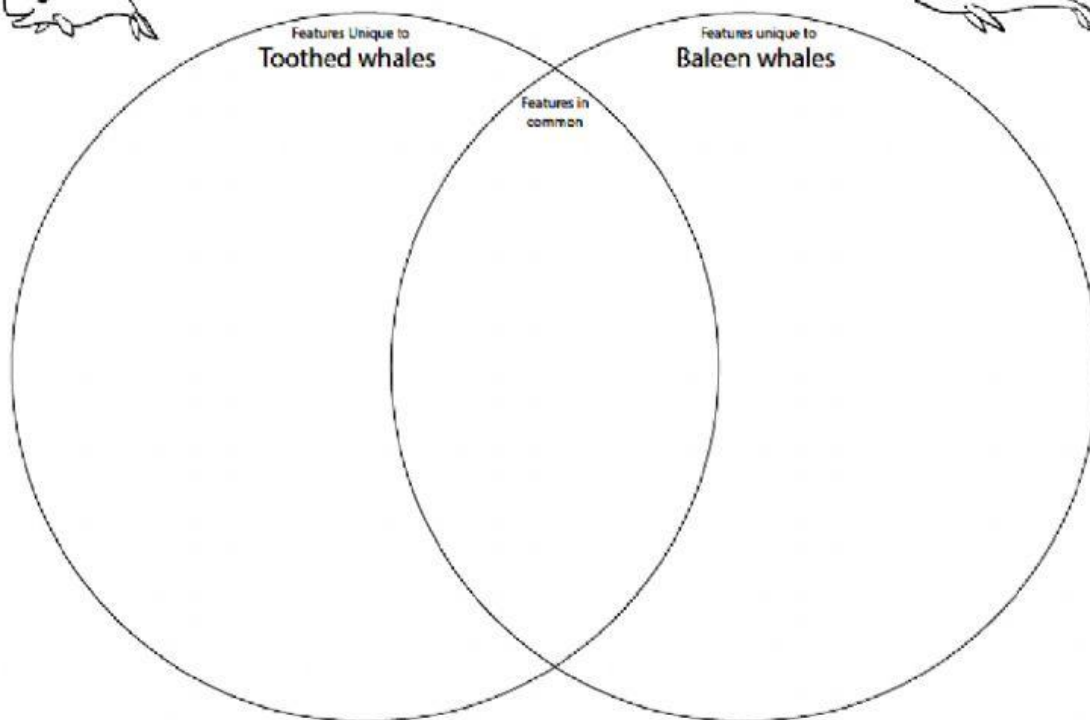


- ☐ A whale actually opens a blowhole to breathe when it breaks the surface and closes it before submerging again.
- ☐ A whale inhales oxygen through an always-open blowhole after it ejects water that leaked in while submerged.
- ☐ A whale extracts oxygen from the water and when it surfaces, it blows out water containing carbon dioxide.

IV. COMPLETE THE VENN'S DIAGRAM, DRAG AND DROP THE CORRECT ANSWERS



What features do the two classifications of whales have in common? What are the differences between them?



- Asymmetrical skull
- Baleen
- Breathe air
- Females usually larger than males
- Have spinal chord
- Large animals
- Large tongue
- Live in the ocean
- Males usually larger than females
- Mammals
- No teeth
- One blowhole
- Small groups
- Small to large size
- Small tongue
- Symmetrical skull
- Teeth
- Two blowholes
- Use echolocation

V. LISTEN TO A CHAPTER OF MOBBY DICK STORY, COMPLETE IT, USE THE WORDBANK

Crew – Stronger - - Monster - White Whale - Sperm Whale – Battle - Moby Dick –
Magnitude – Whale – Attacked – Battle - species.

I, Ishmael, was one of that.....; my shouts had gone up with the rest; my oath had been welded with theirs; andI shouted, and more did I hammer and clinch my oath, because of the dread in my soul. A wild, mystical, sympathetical feeling was in me; Ahab's quenchless feud seemed mine. With greedy ears I learned the history of that murderousagainst whom I and all the others had taken our oaths of violence and revenge.

For some time past, though at intervals only, the unaccompanied, secludedhad haunted those uncivilized seas mostly frequented by thefishermen. But not all of them knew of his existence; only a few of them, comparatively, had knowingly seen him; while the number who as yet had actually and knowingly givento him, was small indeed. For, owing to the large number of whale-cruisers; the disorderly way they were sprinkled over the entire watery circumference, many of them adventurously pushing their quest along solitary latitudes, so as seldom or never for a whole twelvemonth or more on a stretch, to encounter a single news-telling sail of any sort; the inordinate length of each separate voyage; the irregularity of the times of sailing from home; all these, with other circumstances, direct and indirect, long obstructed the spread through the whole world-wide whaling-fleet of the special individualizing tidings concerning..... It was hardly to be doubted, that several vessels reported to have encountered, at such or such a time, or on such or such a meridian, a Sperm Whale of uncommonand malignity, which whale, after doing great mischief to his assailants, has completely escaped them; to some minds it was not an unfair presumption, I say, that thein question must have been no other than Moby Dick. Yet as of late the Sperm Whale fishery had been marked by various and not unfrequent instances of great ferocity, cunning, and malice in the monster.....; therefore it was, that those who by accident ignorantly gaveto Moby Dick; such hunters, perhaps, for the most part, were content to ascribe the peculiar terror he bred, more, as it were, to the perils of the Sperm Whale fishery at large, than to the individual cause. In that way, mostly, the disastrous encounter between Ahab and the whale had hitherto been popularly regarded.

And as for those who, previously hearing of the White Whale, by chance caught sight of him; in the beginning of the thing they had every one of them, almost, as boldly and fearlessly lowered for him, as for any other whale of that..... But at length, such calamities did ensue in these assaults— not restricted to sprained wrists and ankles, broken limbs, or devouring amputations—but fatal to the last degree of fatality; those repeated disastrous repulses, all accumulating and piling their terrors upon Moby Dick; those things had gone far to shake the fortitude of many brave hunters, to whom the story of the White Whale had eventually come.