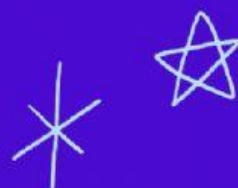




# ***Describing Places***



Match the vocabulary words with their synonym:

NEAR

UNINTERESTING

FAR

DISTANT

BORING

CLOSE

LIVELY

LITTLE

HUGE

ANIMATED

EXPENSIVE

LOW-COST

SMALL

PRICEY

CHEAP

BIG

Check the correct pronunciation of the words:

NEAR

HUGE

PRICEY

LIVELY

EXPENSIVE

BORING

The sentences have an incorrect word, change it for one from the box:



NEAR – CHEAP – EXPENSIVE – SMALL –  
HUGE – FAR – BORING – LIVELY

1. Beijing is a boring city: there is a lot of nightlife and people.  
\_\_\_\_\_
2. My new cellphone was very pricey because I found it on sale.  
\_\_\_\_\_
3. Buying a house is really low-cost in Punta Arenas.  
\_\_\_\_\_
4. For most people Torres del Paine is near, but for us it is very close.  
\_\_\_\_\_
5. Parties are really animated for me – I do not like them.  
\_\_\_\_\_
6. Towns are very big in comparison with cities.  
\_\_\_\_\_
7. Puerto Natales is distant from here, you only need to take a bus to get there.  
\_\_\_\_\_
8. The Coliseum is little in comparison with the Casino Dreams.  
\_\_\_\_\_



Match the sentences with the correct preposition of place IN, ON, o AT:



I arrived (in, on, at)  
the meeting.

They were (in, on, at)  
the way from the  
café to the museum.

John was born (in, on,  
at) Germany.

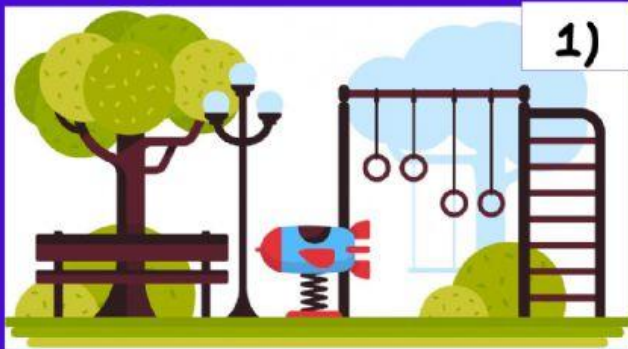
There is a fly (in, on,  
at) the table.

There are people  
waiting (in, on, at)  
the entrance.

She fell asleep (in, on,  
at) the bookstore.

IN	ON	AT

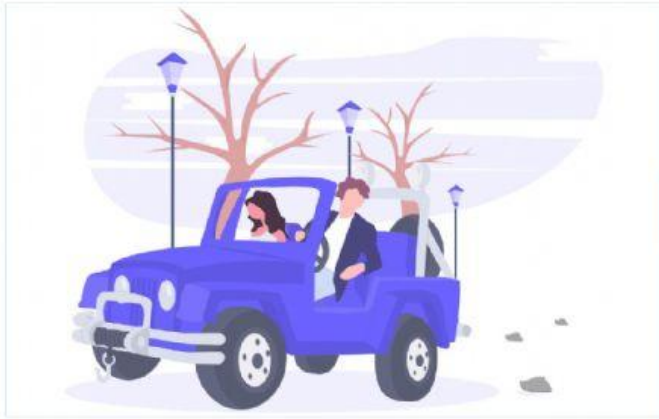
Look at the pictures and create sentences using the vocabulary given:



1. THERE IS: \_\_\_\_\_
2. THERE ARE: \_\_\_\_\_
3. THERE ISN'T: \_\_\_\_\_
4. THERE AREN'T: \_\_\_\_\_
5. SEVERAL: \_\_\_\_\_
6. PEOPLE: \_\_\_\_\_
7. A: \_\_\_\_\_



Where are they? Write according to the picture:

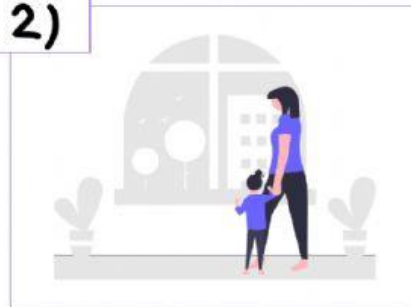


Example: *They are in a car.*

1)



2)



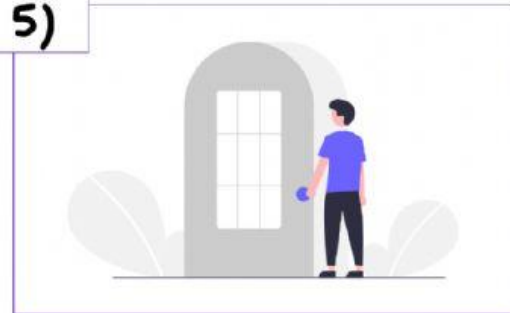
3)



4)



5)



1. \_\_\_\_\_

2. \_\_\_\_\_

3. \_\_\_\_\_

4. \_\_\_\_\_

5. \_\_\_\_\_