

WATCHING – BWH S01E01

Watch the video below then complete activities:

Match the names to the characters:

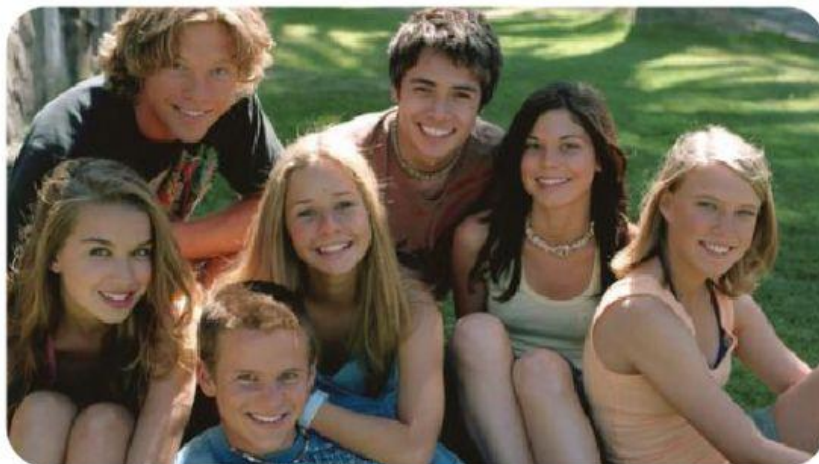
Bec

Fly

Perri

Matt

Edge



Anna

Heath

Match the names to the characters:

1) How many finalists are there in the last heat?

- a) Six
- b) Eight
- c) Fourteen
- d) Twenty

2) How many people will get a place at Solar Blue's Academy?

- a) Five
- b) Six
- c) Seven
- d) Eight

3) What is the relationship between Bec and Joe?

- a) They are dating.
- b) They are siblings.
- c) They are rivals.



4) How many times does Stacy sabotage Fly's boards?

- a) Once
- b) Twice
- c) Three times

Choose True or False.

5) Heath likes to record everything.

True False

6) Edge's father is not sympathetic.

True False

7) Stacy is an honest person.

True False

8) Perri believes in long-distance relationships.

True False

9) Anna is a kiteboarder.

True False

Answer the questions below using the words in the brackets:

10) Why does Heath lend his board to Fly? (use the object pronoun 'it')

11) Why is Simmo and Deb having an argument? (use the object pronoun '**them**')

12) Who is Anna? (use the word 'from')

13) Does Bec like Anna? Why? (use the object pronoun: **'her'**)

14) What does Heath think about sporting injuries? (use the personal pronoun: **'they'**)

TELL ME

15) Why does Fly get hurt in the first final heat?

16) Do you think Anna is a good or a bad person? Why?

17) What do you think is going to happen between Anna and Bec?

18) How do Matt and Heath convince Bec to help Fly?

19) Who was your favorite character?

20) Summarize the story.