

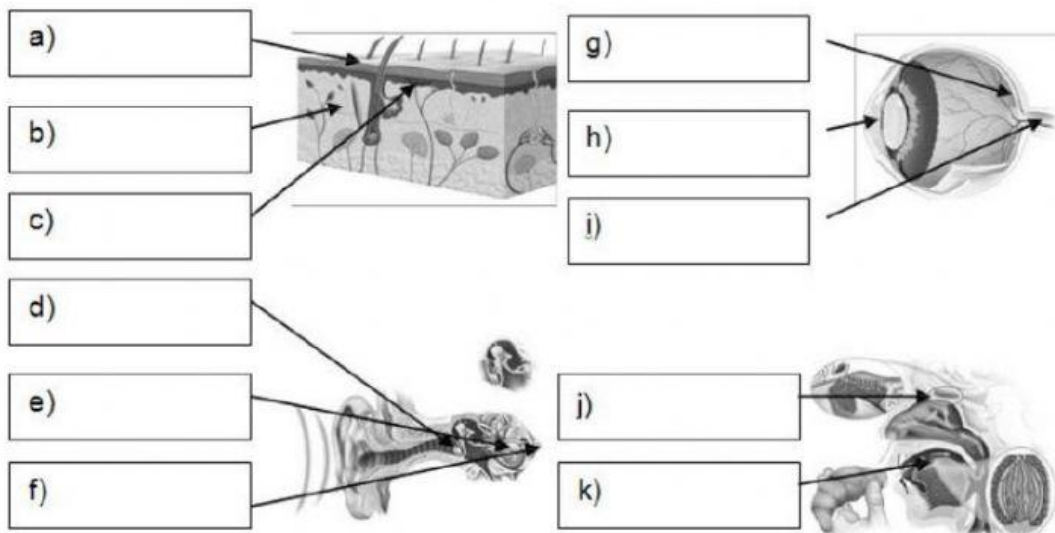
## WORKSHEET 5: REVIEW

### 1) CHOOSE THE CORRECT WORD:

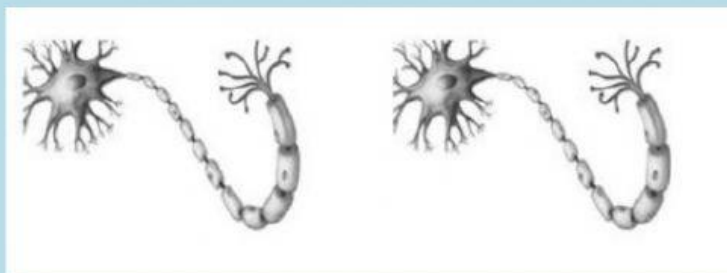
- The most important organ in the nervous system is the brain / spinal cord
- Nerve cells send messages by electrical impulses called synapses/ nerve impulses
- We get information about the world around us from our sense organ / brain stem
- By doing puzzles and thinking games, we can keep our muscles / brain healthy
- To have a healthy nervous system, we should eat healthy / unhealthy food

### 2) LABEL THE DIAGRAM

pupil	cochlea	epidermis	retina	taste buds	eardrum	nerve endings
dermis	optic nerve	olfactory nerve	gustatory nerve	auditory nerve		



### 3) MATCH THE ARROWS TO SHOW HOW IMPULSES ARE TRANSMITTED



#### 4) DRAW ARROWS TO LABEL SKELETAL AND MUSCULAR SYSTEMS



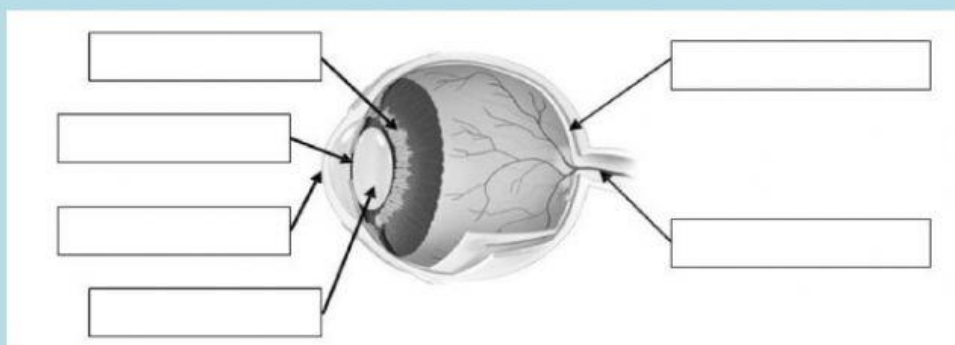
trapezius  
pectoral  
skull  
humerus  
deltoid  
abdominal  
rib cage  
quadriceps  
radius  
femur  
tibia  
ankle



#### 5) COMPLETE THE CHART

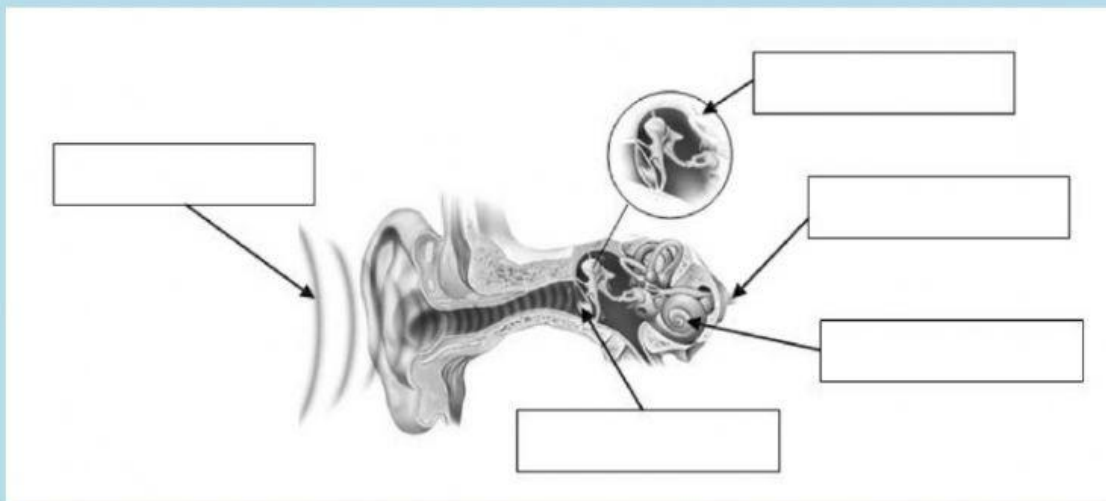
Sense of smell	Sense of taste
Nasal _ a _ _ a _ e _	_ o u _ _
O _ _ a _ _ o _ _ nerve	_ a _ _ e buds
O _ _ a _ _ o _ _ e _ _ _	_ u _ _ a _ o _ _ nerves
_ o _ e	_ a _ i _ a
	_ o _ _ u e

#### 6) LABEL THIS EYE. RETINA / IRIS / LENS / CORNEA / PUPIL / OPTIC NERVE



## 6) LABEL THE PARTS OF THE EAR

**SMALL BONES / AUDITORY NERVE / EARDRUM / COCHLEA / AUDITORY NERVE**



## 7) COMPLETE THE TEXT

**INVOLUNTARY MOVEMENTS / COORDINATION / CEREBRUM / BRAINSTEM / BALANCE / MOVEMENT**

The \_\_\_\_\_ controls intelligence, memory and emotion.

The Cerebellum controls \_\_\_\_\_ and \_\_\_\_\_.

The \_\_\_\_\_ coordinates messages to and from the brain. It also controls \_\_\_\_\_.

A diagram of the human brain showing the cerebrum, cerebellum, and brainstem. Three lines point from the text boxes to the corresponding parts of the brain: the top box points to the cerebrum, the middle box points to the cerebellum, and the bottom box points to the brainstem.

## 8) ORDER FROM 1 TO 5

- ☐ The brain stem receives the message and processes it.
- ☐ If we touch a hot object, our sensory nerves send a message to our brain.
- ☐ The message travels along our spinal cord to the brain.
- ☐ When our motor nerves receive the message, we move our hand away.
- ☐ Then, it sends a message to our motor nerves.