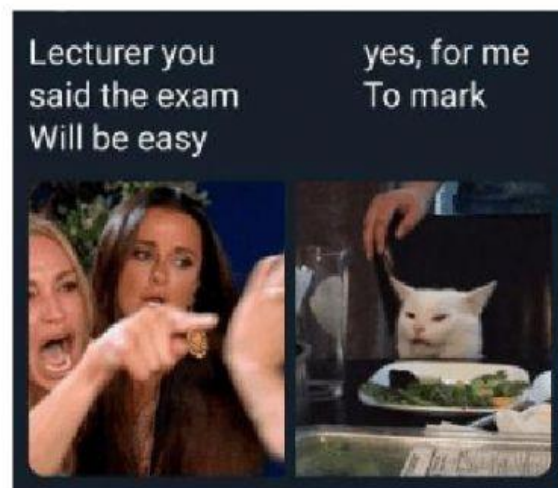


**Name:** \_\_\_\_\_

**Class:** \_\_\_\_\_

**Date:** \_\_\_\_\_

**EVIL LAUGH**



## **Test #1**

(because you're awesome and nothing scares you!)

Marks:	Theory:	/56
	Classical Music	/8
	Listening	/10
	<b><u>Total:</u></b>	<b><u>/74</u></b>

**Step:**

**5**

**6**

**7**

**8**

# Theory

## Note Names

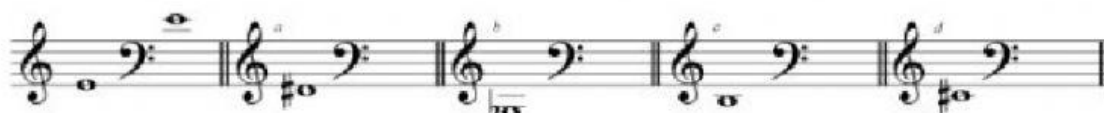
1. What are the names of these notes (treble clef)?



/9

## Rewriting with a New Clef - Treble to Bass

1) Rewrite these treble clef notes in the bass clef, keeping the pitch the same. The first answer is given.



/4



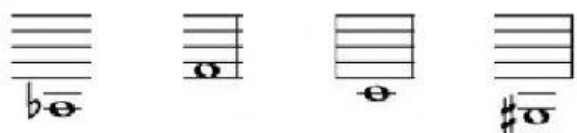
Drag and Drop

## Rewriting with a New Clef - Bass to Treble

3) Rewrite these bass clef notes in the treble clef, keeping the pitch the same. The first answer is given.



/4

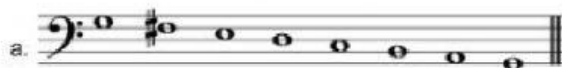


Drag and Drop

# Major Scales

## Which Scale?

1. Name the key of each of these major scales, and say whether it is **ascending** or **descending**.



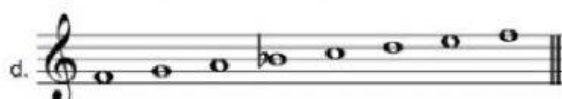
/2



/2



/2



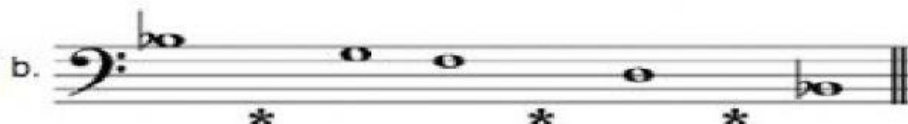
/2

## Completing Scales

2. Complete these scales, (which all start on the tonic), by adding the missing notes in the places marked \*.



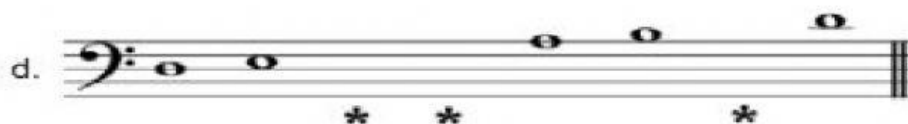
/2



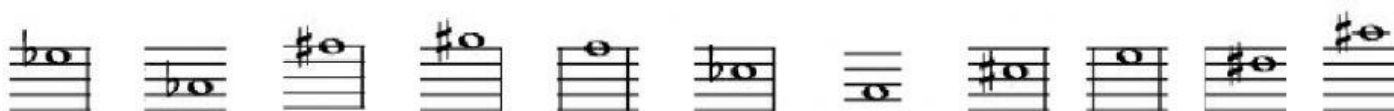
/3



/3



/3




Drag and Drop

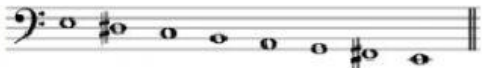
# Minor scales

## Which Scale?


1. Name each of these minor scales and say whether it is the **melodic** or **harmonic** type, and whether it is **ascending** or **descending**.

a. 

/2

b. 

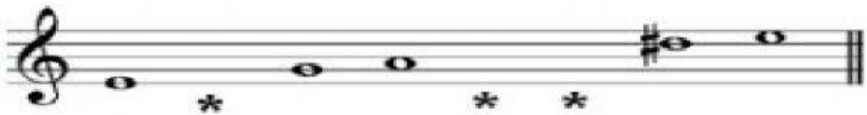
/2

c. 


/2

## Completing Scales

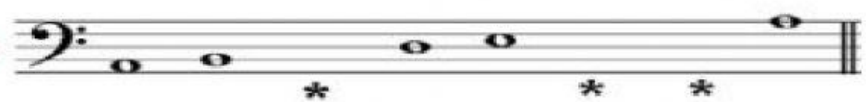
2. Add the missing notes to these minor scales.

a. E minor melodic 

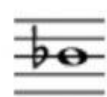





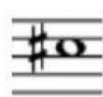


/3

b. D minor harmonic 

/3

c. A minor harmonic 

/3



Drag and Drop

## Degrees of the scale

Name the degrees

. The key is G major



/5

## Classical Period

1. What are the dates of the *Classical Period*?

/2

2. What are the 3 forms we studied in class?

a. \_\_\_\_\_

b. \_\_\_\_\_

c. \_\_\_\_\_

/3

3. Define those 3 forms:

a. \_\_\_\_\_

b. \_\_\_\_\_

c. \_\_\_\_\_

/3

# Listening

*Listen to an extract of music THREE times. The extract lasts for about two minutes and contains three sections of roughly equal length.*

*Answer the questions below by circling the correct letter (a-e).*

1. Which era of Music History was this piece written in?
  - a. Renaissance
  - b. Baroque
  - c. Classical
  - d. Romantic
  - e. Modern
  
2. The composer based this on one of his other pieces. Which is it?
  - a. The Trout
  - b. What is Life
  - c. Minuet
  - d. Hymn to the Emperor
  - e. Symphony No. 5
  
3. Who is the composer?
  - a. Mozart
  - b. Gluck
  - c. Schubert
  - d. Haydn
  - e. Beethoven
  
4. What ensemble (group) plays in the first section?
  - a. Orchestra
  - b. Choir
  - c. Brass quartet
  - d. Wind quartet
  - e. String quartet
  
5. Which instrument plays the tune in the FIRST section?
  - a. Flute
  - b. Oboe
  - c. Violin
  - d. Guitar
  - e. Trumpet

6. Which instrument plays the tune in the SECOND section?
- Guitar
  - Piano
  - Harpsichord
  - Harp
  - Organ
7. Which instrument plays the tune in the THIRD section?
- Trombone
  - Tuba
  - Clarinet
  - Viola
  - Double bass
8. Which of the following instruments is also playing in this piece?
- 'Cello
  - Timpani
  - Piccolo
  - Bassoon
  - French horn
9. What form is this piece in?
- Strophic
  - Rondo
  - Ternary
  - Variations
  - Sonata
10. What is the best description of this whole ensemble?
- Duet
  - Trio
  - Quartet
  - Quintet
  - Sextet