

GRAMMAR CHANT

EXERCISE 1. LISTEN AND SAY THE CHANT.

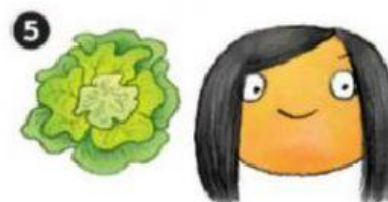
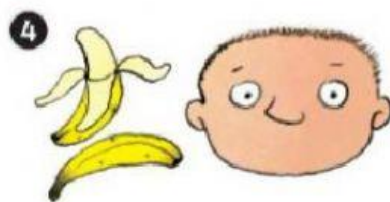
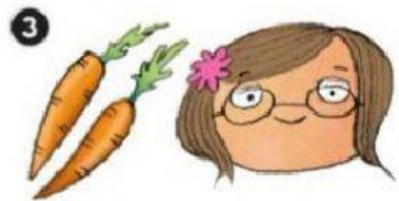
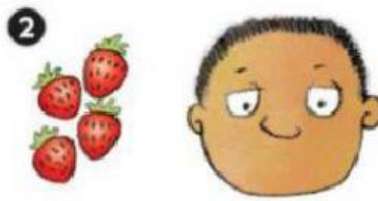
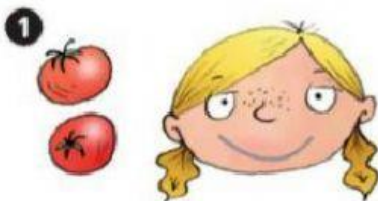


DO YOU LIKE LETTUCE?
YES, I DO
I LIKE LETTUCE AND CARROTS TOO.

DO YOU LIKE APPLES?
NO, I DON'T.
I DON'T LIKE APPLES OR JUICE.



EXERCISE 2. LISTEN AND DRAW THE MOUTH.





DO YOU LIKE EGGS?

YES, I DO.

I LIKE EGGS.



DO YOU LIKE CHICKEN?

YES, I DO.

I LIKE CHICKEN.



DO YOU LIKE KIWI?

NO, I DON'T.

I DON'T LIKE KIWI.



DO YOU LIKE CHEESE?

NO, I DON'T.

I DON'T LIKE CHEESE.

