

WORKSHEET 4: LOCOMOTOR SYSTEM

1) WHAT ARE THE PARTS OF THE LOCOMOTOR SYSTEM?

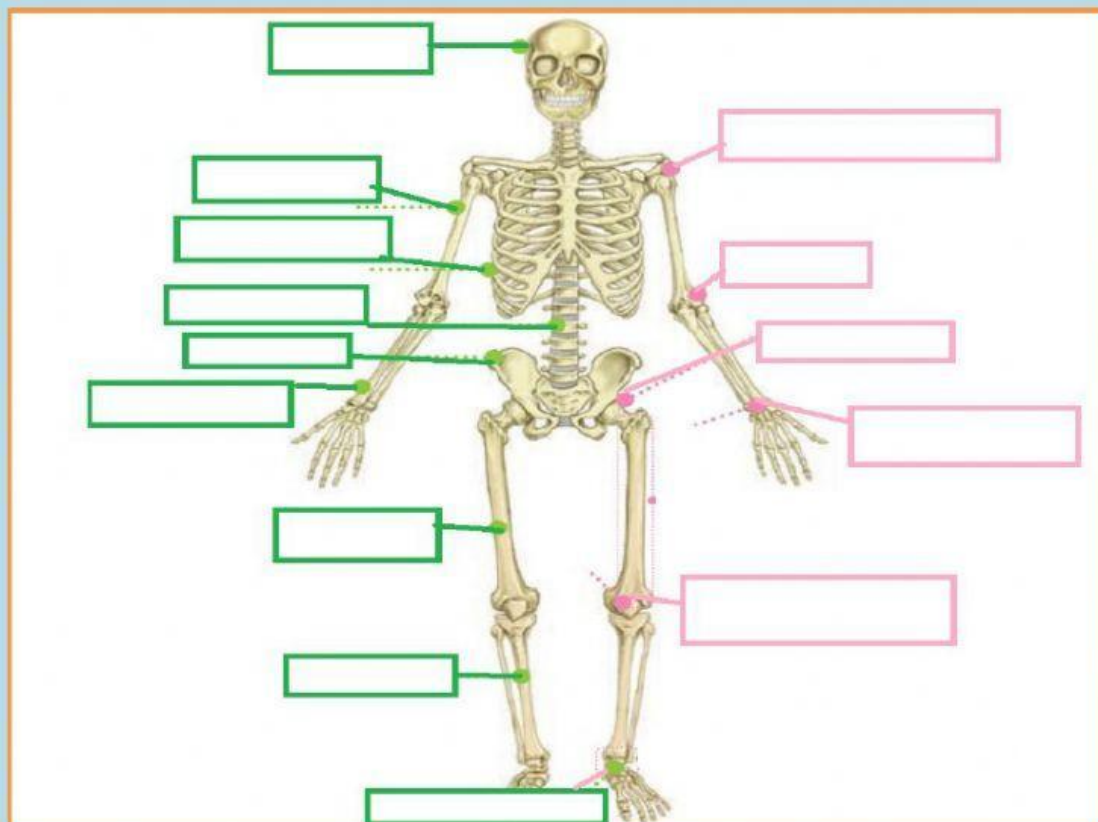
Locomotor system is made of _____ and _____.

2) PARTS OF OUR SKELETAL SYSTEM

SKULL LIGAMENTS BONES MUSCLES CELLS JOINTS SPINAL COLUMN

3) BONES AND JOINTS:

SKULL	HUMERUS	RIB CAGE	SPINAL COLUMN	PELVIS	RADIUS	FEMUR
TIBIA	ANKLE	KNEE	WRIST	HIP	ELBOW	SHOULDER



4) MATCH

BONES ARE

WHERE TWO BONES MEET

JOINTS ARE

SOLID IN THE OUTSIDE AND SPONGE-LIKE IN THE INSIDE

LIGAMENTS ARE

THE UNION OF TWO JOINTS

6) COMPLETE

The muscular system is made of _____ and _____ .

It allows us to make _____ and _____ movements.

7) TYPES OF TISSUE IN THE MUSCULAR SYSTEM:

TENDONS SMOOTH MUSCLES CARDIAC MUSCLES

CONTRACT LIGAMENTS BONES SKELETICAL

8) MUSCLES

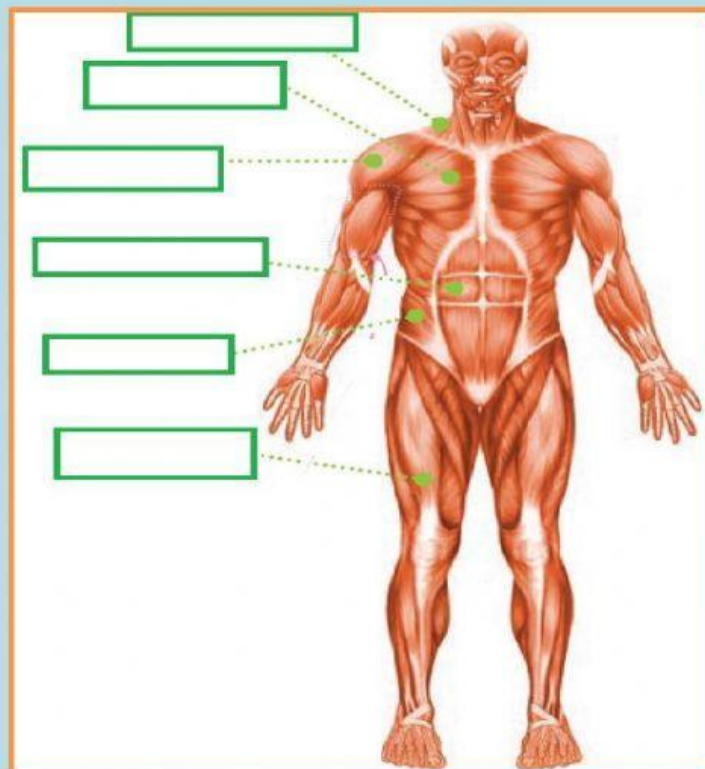
TRAPEZIUS

PECTORAL

DELTOID

ABDOMINAL

OBLIQUE CUADRICEPS



8) MATCH

Bone marrow

Muscles

Tendons

Skeletal muscles

Smooth muscles

Cardiac muscles

· tissue which is soft and flexible

· involuntary muscles found in the heart

· involuntary muscles

· they attach muscles to bones

· muscles that we choose to move

· the interior part of a bone where blood cells are produced