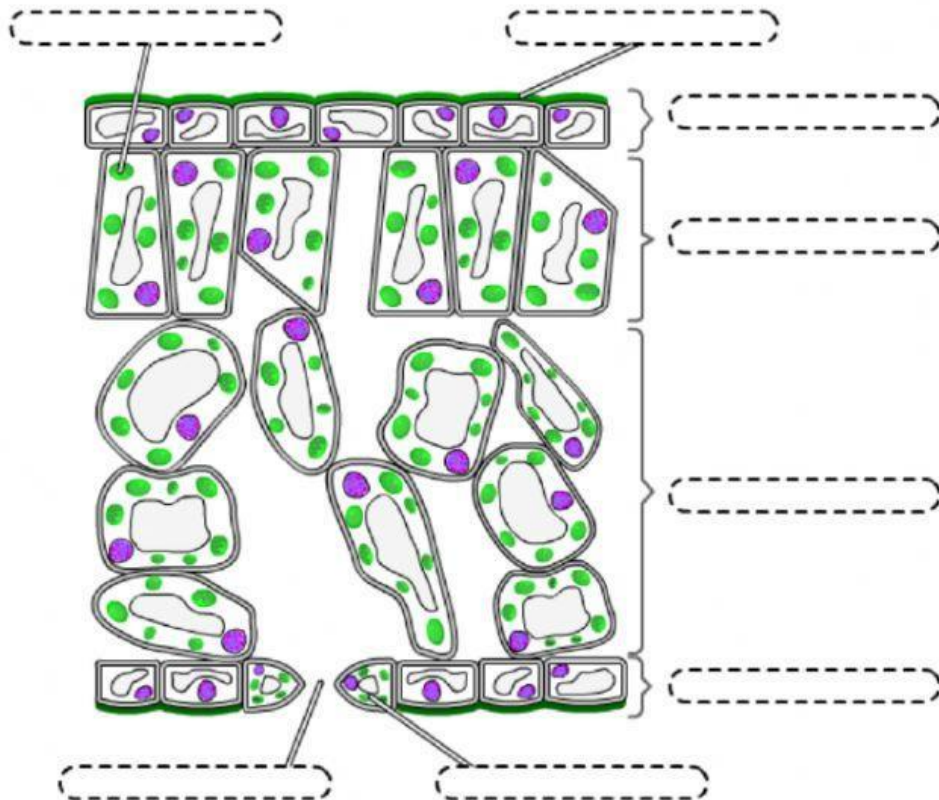


## The structure of a leaf



Ubica los siguientes términos en el diagrama

stoma    spongy mesophyll    upper epidermis    waxy cuticle

guard cell    chloroplast    lower epidermis    palisade mesophyll

Completa las descripciones con los términos anteriores

- 1 The cells in the \_\_\_\_\_ contain no chloroplasts and are transparent to allow light to penetrate into the leaf.
- 2 The \_\_\_\_\_ cells are packed tightly together near the top of the leaf to collect as much sunlight as possible. They contain many chloroplasts and most photosynthesis takes place in these cells.
- 3 The \_\_\_\_\_ cells contain air spaces to allow the movement of gases (i.e. carbon dioxide and oxygen) throughout the leaf.
- 4 The \_\_\_\_\_ helps to regulate the movement of gases into and out of the leaf. They also help to control the loss of water vapour (transpiration).
- 5 The stomata are found in the \_\_\_\_\_. Besides the guard cells the cells in this layer contain no chloroplasts.