

ACTIVITIES

BEFORE READING

- 1 Here are some of the people in the story. Match the information about them with the pictures.**



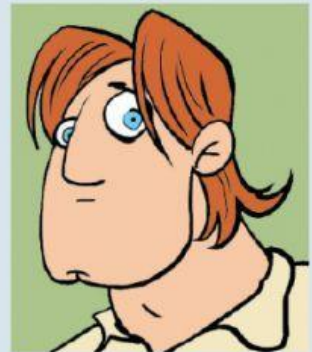
a ☐ Professor Otto Lidenbrock



b ☐ Axel



c ☐ Gräuben

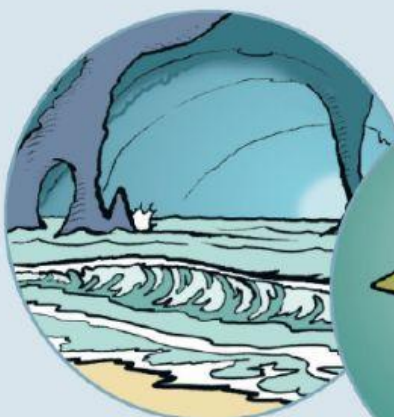


d ☐ Hans Bjelke

- 1** He comes from Iceland. He's strong and very quiet.
- 2** He's a science teacher at the Johanneum, a school in Hamburg.
- 3** She's the daughter of a good friend of Professor Lidenbrock's.
- 4** He lives and works with his uncle, Professor Lidenbrock, because his mother and father are dead.

- 2 Three of the people go on a journey to the centre of the Earth. Which three?**

- 3 What do they find when they go underground? Tick the boxes.**



a ☐ a sea



b ☐ monsters



c ☐ trees



d ☐ a town