

LISTENING - Pieces of Me, Ashlee Simpson

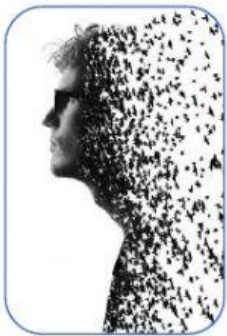
Listen to the song below then complete the exercises.

1) Match the day of the week to the correct picture.

Monday

Tuesday

Wednesday



2) Complete the verse.

Ohh!

It seems _____ I can finally

Rest my _____ on something _____

I like the _____ that feels

Ohh!

It's as if you know me _____

Than I ever knew _____

I _____ how you can tell

All the pieces, pieces, pieces of _____

3) Choose the words in the box to complete the verses.

Be careful: you won't use all of them.

angry	fast	happy	hungry	lassie
	mazy	messy	moody	reckless
	restless		sad	selfless
		senseless		tearless

I am _____ and _____

I get _____ and it's _____

How you never seem to care

When I'm _____, you listen

Make me _____, it's your mission

And you won't stop till I'm there

Fall, sometimes I fall so _____

When I hit that bottom crash

You're all I have

4) All of the words you've used to complete the exercise 3 are:

adjectives

adverbs

nouns

verbs

Except for the word '_____' that is an _____, in this case.

5) Use the following verbs to complete the verses.

Attention: Be sure to put them into the correct tense.

be	breathe	fade	go	hope
	know	say	wait	

How do you _____

Everything I'm about to _____?

_____ I that obvious?

And if it's written on my face

I _____ it never _____ away

Yeah...

On a Monday I am _____

By Tuesday I am _____

Into your arms

So I can _____

