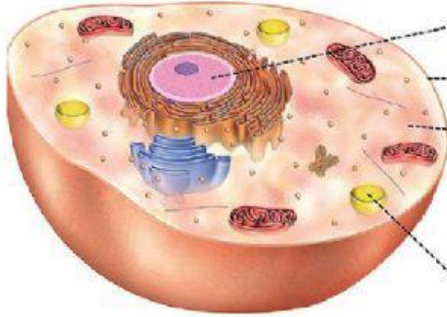


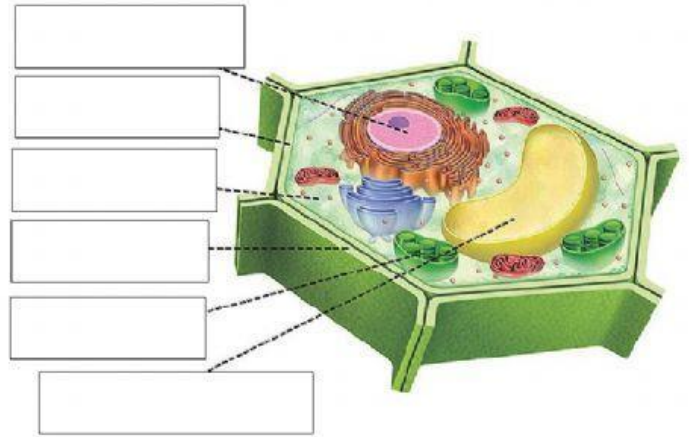
CELL STRUCTURE

1. Write the type of cell and complete the parts of the cell

_____ cell



_____ cell



2. Match the name of each part with their function.

Nucleus

Cell membrane

Cytoplasm

Vacuoles

Cell wall

Chloroplasts

- Jelly-like substance that fills the cell and where we can find all the organelles of the cell.

- It protects the cell and gives shape.

- It controls all the functions of the cell. It's the brain of the cell.

- They contain chlorophyll which is needed for photosynthesis.

- They contain water and minerals.

- Thin layer that surrounds the cell. It controls the substances that enter and leave the cell.

SPECIALISED CELLS

1. Match the specialised cells with their function

Red blood cells

White blood cells

Nerve cells

Root hair cells

Leaf cells

Absorb water and minerals

Protect our bodies from bacteria

Carry oxygen

Absorb sunlight

Carry information from the brain to
the rest of the body

2.