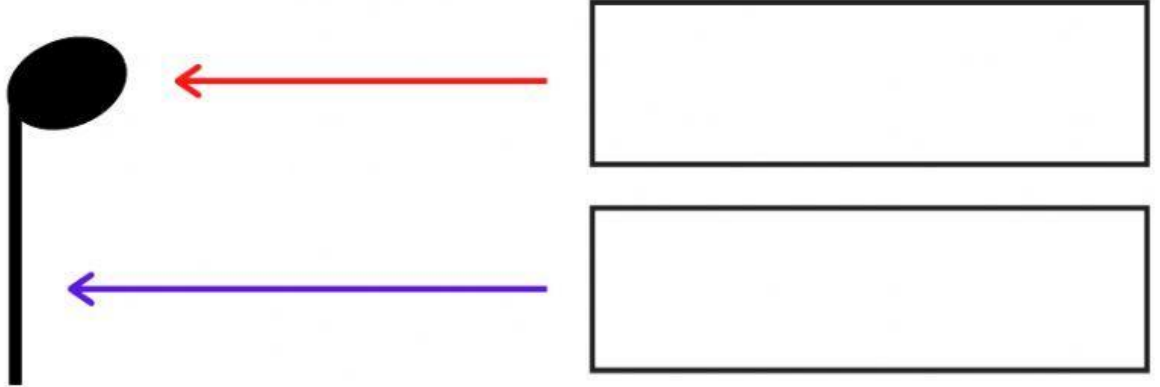


Parts of a Note and Rhythm Notes

1. Name the two parts of the given note:



2. Add the note stem going UP:



3. Add the note stem going DOWN:



4. Add the note stem going UP:

5. Add the note stem going DOWN:



4. Fill in the blanks:

1. A note head is _____ (Oval/ Round)

2. When a note stem goes down, it is drawn on the _____
(right/left) side of the note head

3. When a note stem goes up, it is drawn on the _____
(right/left) side of the note head

4. For a _____ (crotchet/minim), we clap one count "ta".

5. For _____ (quavers/semibreve), we clap two half counts
count "ti-ti".

6. For semibreves, we count " _____ " (ta-a-a/ ta-a-a-a)

7. For dotted minims, we count " _____ " (ta-a-a/ ta-a)

8. A crotchet has a _____ (empty/ filled in)