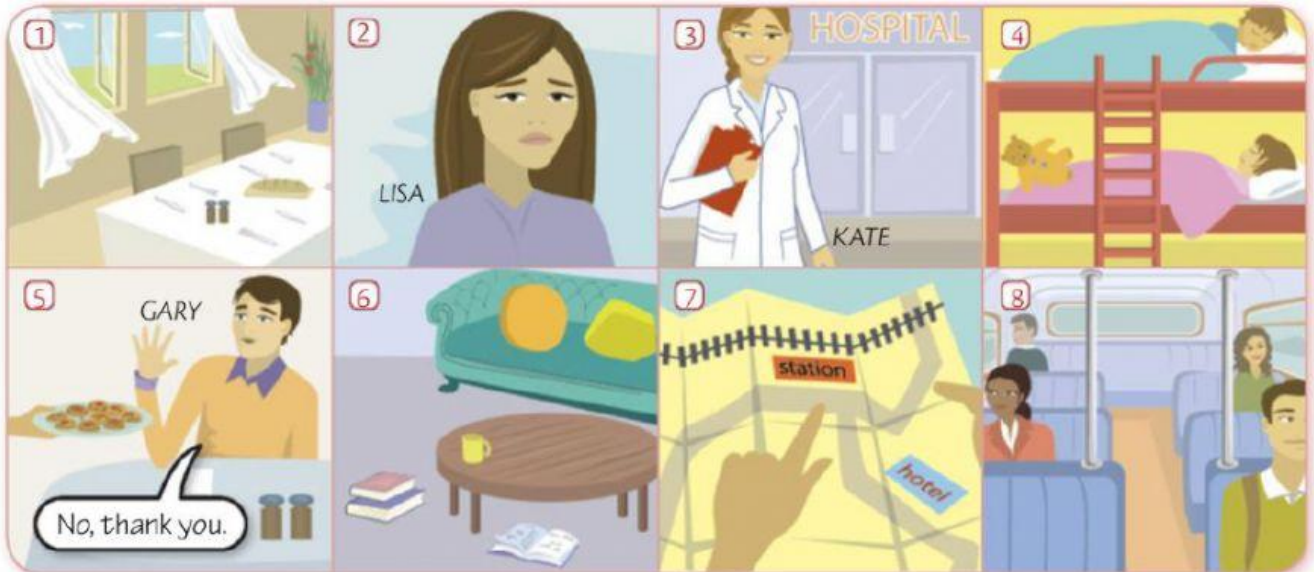


Review English 1

1 Write sentences for the pictures. Use the words in the boxes + **is/isn't/are/aren't**.



~~The windows~~

~~Lisa~~

Kate

The children

Gary

The books

The hotel

The bus

on the table

hungry

asleep

~~open~~

full

near the station

a doctor

~~happy~~

1 The windows are open.

2 Lisa isn't happy.

3 Kate

4

5

6

7

8

2 Complete the sentences. Use the present simple.

1 Sue always gets to work early.

2 We don't watch TV very often.

3 How often do you wash your hair?

4 I want to go to the cinema, but to go.

5 to go out tonight?

6 near here?

7 a lot of people.

8 I enjoy travelling, but very much.

9 What time in the morning?

10 My parents are usually at home in the evening.

very often.

11 work at five o'clock.

12 A: What ?

B: in a hotel.

(Sue / always / get)

(we / not / watch)

(you / wash)

(Sam / not / want)

(you / want)

(Helen / live)

(Sarah / know)

(I / not / travel)

(you / usually / get up)

(they / not / go out)

(Tom / always / finish)

(Jessica / do)

(she / work)