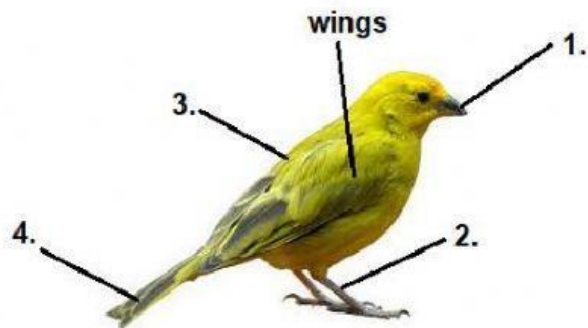
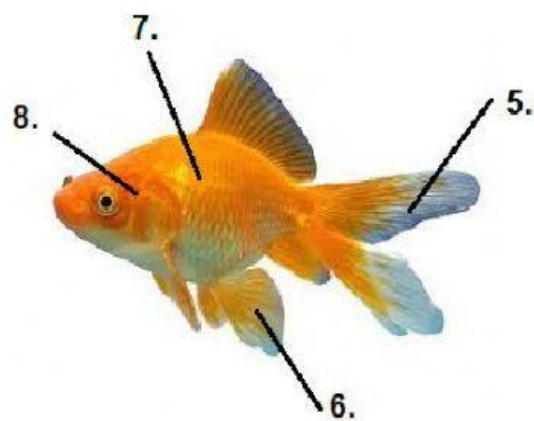


I. Write correct answer by choosing the correct answer in the box.



Legs  
beak  
Feathers  
tail



Gills  
Scales  
Fins  
tail

**II. Identify if it is Arthropods and Molluscs.**



1.	2.	3.
----	----	----



4.	5.
----	----

**III. Identify if is Mammals, Birds, fish, Reptiles or Amphibians.**



1.	2.	3.
----	----	----



4.	5.
----	----

