

- 1. Match the phrases in Column A with the correct words in Column C and write the answers in the spaces in Column B.**

	COLUMN A	COLUMN B	COLUMN C
a.	Scientists classify animals into _____ groups.		five
b.	A plant that has flowers is called a _____ plant.		eggs
c.	Animals with a backbone can be classified into _____ groups.		Sun
d.	Most fish lay _____.		two
e.	Birds breathe with their _____.		lungs
			flowering

(5 marks)

- 2. Write “T” (True) against the correct statement and “F” (False) against the wrong statement.**

- a. We see with our ears. (     )
- b. All fish live in water. (     )
- c. Amphibians lay eggs on land. (     )
- d. Reptiles have scales on their body. (     )
- e. An elephant is an example of a mammal. (     ) (5)

- 3. Fill in the blanks with the correct words.**

birth	six	nestling	fly	microscope
-------	-----	----------	-----	------------

breaking	cat	moist	move	table
----------	-----	-------	------	-------

- a. Fungi grow well in places that are \_\_\_\_\_.
- b. We use a \_\_\_\_\_ to see microorganisms.
- c. All insects have \_\_\_\_\_ legs.
- d. Most mammals give \_\_\_\_\_ to their young.
- e. The young of a bird is called a \_\_\_\_\_.
- f. The feathers protect the body and help the bird to \_\_\_\_\_.
- g. A \_\_\_\_\_ is an example of non-living thing.
- h. Most animals \_\_\_\_\_ from place to place by themselves.
- i. A flexible material can be bent easily without \_\_\_\_\_.
- j. A \_\_\_\_\_ is an example of animal with a backbone.

(10 marks)

4. Look at the picture below in figure 1.

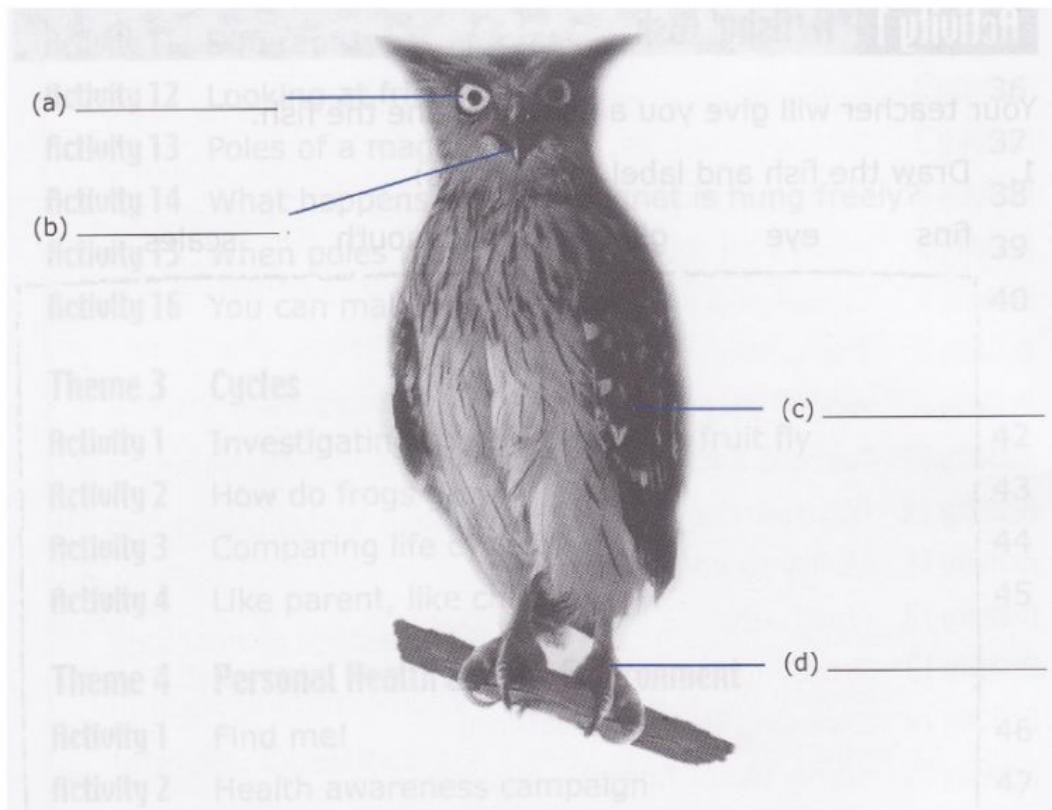


Figure 1

- a) Label these parts of the bird above. (4)
- b) What is the name of this bird? \_\_\_\_\_. (1)
- c) What is the bird covered with? \_\_\_\_\_. (1)
- d) Which part of the bird helps it to fly? \_\_\_\_\_. (1)
- e) Birds are the only kinds of animals that have bodies covered with \_\_\_\_\_. (1)
- f) List two kinds of birds that cannot fly. \_\_\_\_\_ and \_\_\_\_\_. (2)

(10 marks)

5. Look at the picture in figure 2 below.

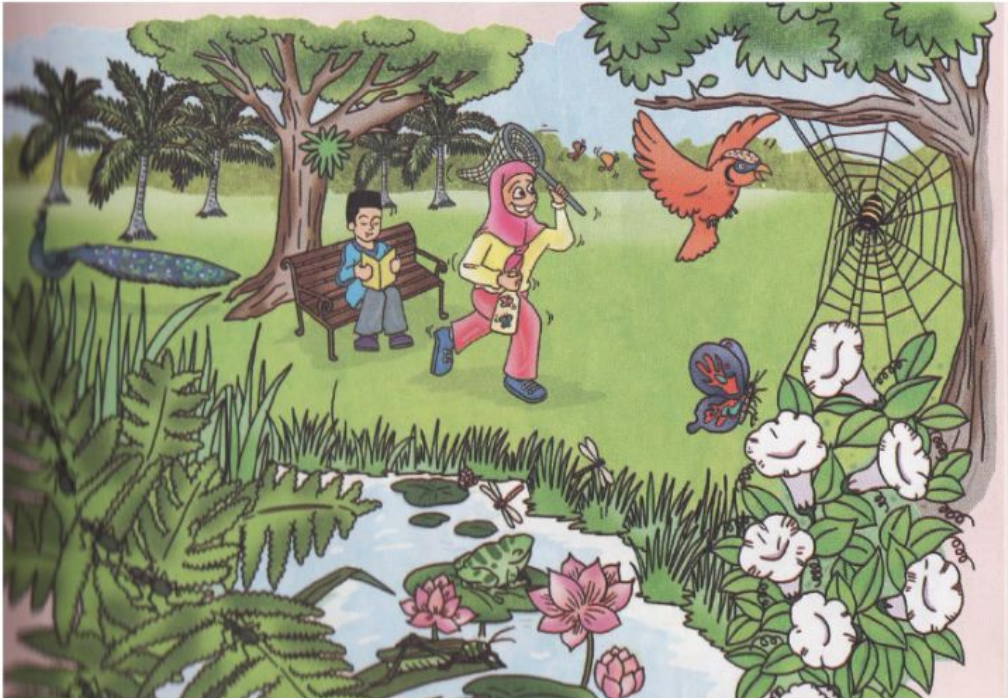


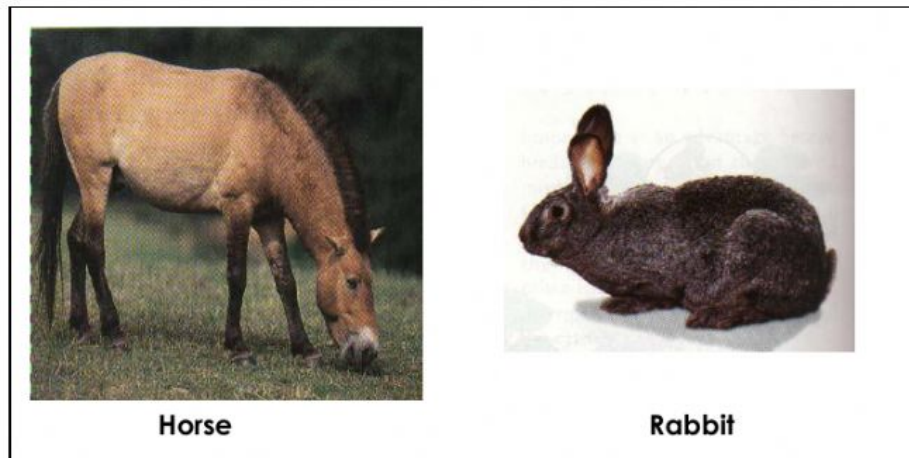
Figure 2

a) Name the animals that can be found in the picture above under the correct group of animals.

Animals with a backbone	Animals without backbone
1.	1.
2.	2.
3.	3.

(6 marks)

6. Study the pictures of animals below in figure 3.



**Figure 3**

Answer all the questions related to the pictures above.

- i) These mammals live on \_\_\_\_\_.
- ii) These mammals have \_\_\_\_\_ on their bodies.
- iii) These mammals give \_\_\_\_\_ to their young.
- iv) These mammals breathe with their \_\_\_\_\_.

(4 marks)

**END OF PAPER**

**TOTAL MARKS: 40**