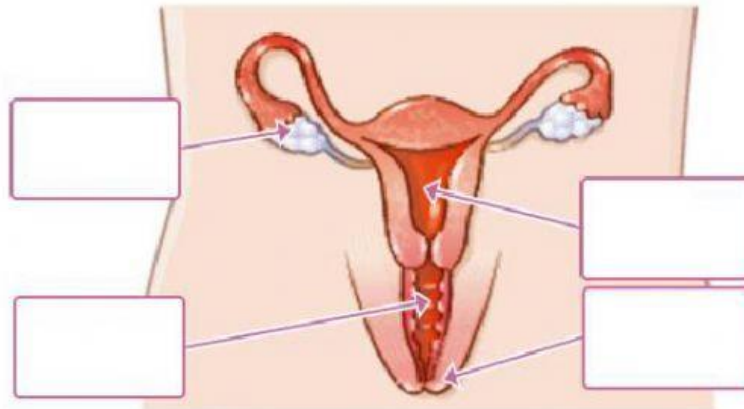
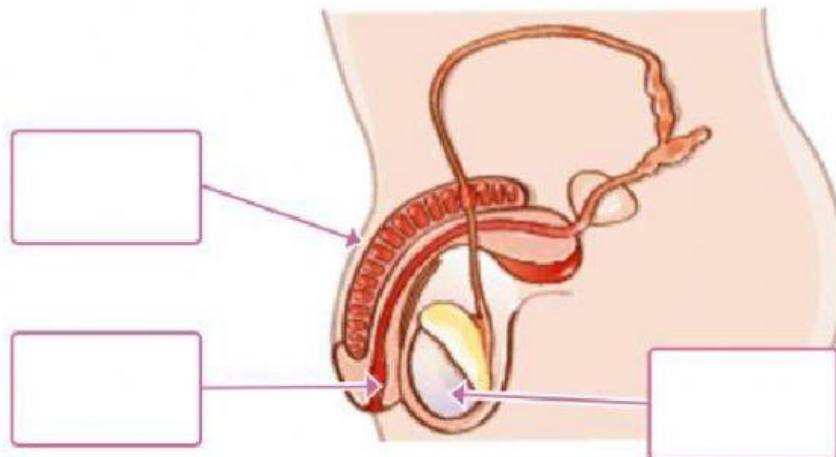


THE REPRODUCTIVE SYSTEM

1. Label the parts of the female and male reproductive system.



| | | | |
|--------|-------|---------|--------|
| vagina | vulva | ovaries | uterus |
|--------|-------|---------|--------|



| | | |
|-------|---------|--------|
| penis | urethra | testes |
|-------|---------|--------|

2. Match the descriptions of the following organs with its correct option.

This organ produces eggs called ova.

This organ produces millions of cells called sperm.

This organ is tube inside the penis which carries the urine.

This organ is where the baby is developed until it is born.

Uterus

Ovaries

Urethra

Testes