

Level 5: Review

1. Look at this picture and answer the questions.



• What type of choir is this? Tick the correct option for each pair of answers.

☐

Equal voices choir

☐

Mixed choir

☐

Chamber choir

☐

Symphonic choir

☐

Choir with instrumental

☐

A cappella choir accompaniment

• What types of voices are there?

☐

Children's voices

☐

Low voices

2. Tick the electric instruments.



3. Look at this picture and answer the questions.



- What type of group is this?
 - ☐ An orchestra
 - ☐ A chamber musical group
 - ☐ A marching band
- What is the name of this musical group?
- Is there a conductor in this group?

4. Classify these instrumental groups. Follow the example.



Group: Orchestra
Type: Symphony orchestra



Group:
Type:

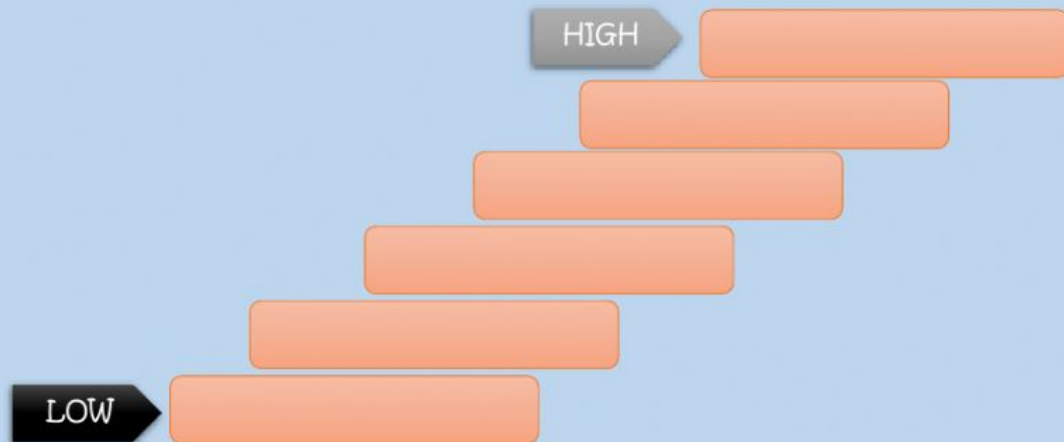


Group:
Type:



Group:
Type:

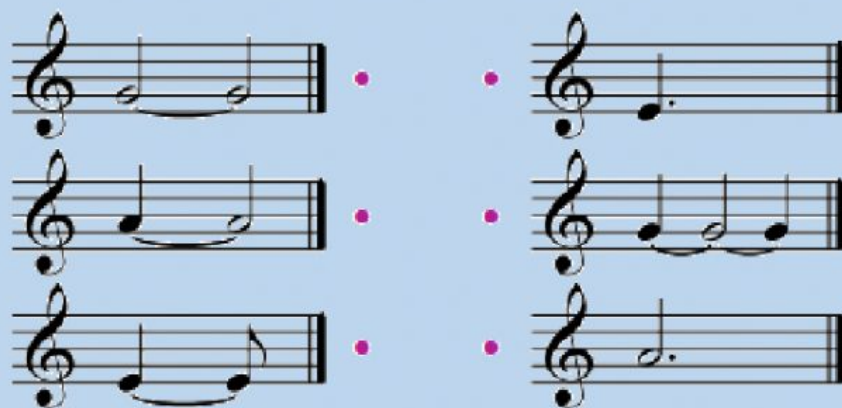
5. Write all of the voice types in order from lowest to highest.



6. Put all the tempos in order from slowest to fastest. Number them.

<input type="checkbox"/> Moderato	<input type="checkbox"/> Prestissimo	<input type="checkbox"/> Andante
<input type="checkbox"/> Largo	<input type="checkbox"/> Presto	<input type="checkbox"/> Adagio
<input type="checkbox"/> Allegro		

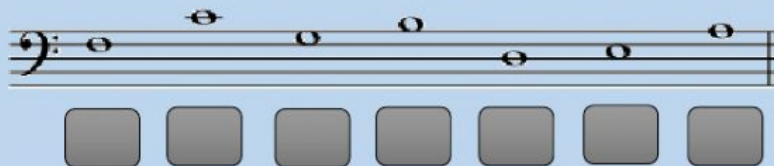
7. Draw arrows between the bars that sound the same.



8. Write an A next to the exercises that begin with an anacrusis.



9. Write the note names.



10. Join each sign with its name.



Sharp sign

Crescendo

Diminuendo

11. Write T for a tone and ST for a semitone.



12. There is a note after me and a rest before me. Who can be?

