

## UNIT 1 VOCABULARY

A) Complete the sentences with the words in the box.

shy	generous	fair	have got	outgoing	smart	fat	big	punctual
short	with	calm	put on	curly	lazy			

1. I..... brown eyes and long brown hair.
2. She always comes on time. She is.....
3. He always eats junk food so he is.....
4. Mary is tall and slim..... blue eyes.
5. Mark always buys presents for his friends. He is very.....
6. She has got long..... black hair.
7. He solves math questions easily. He is very.....
8. They are..... but they can play basketball well.
9. If you eat too much, you will..... weight.
10. She is very..... and finds it hard to make new friends.
11. Don't be so..... – come and help me clean up.
12. She's a very..... girl and has lots of friends.
13. She has ..... hair and blue eyes.
14. Our dog is really..... He weighs over 150 pounds.
15. My mum is very..... and she never shouts.



B) Complete the dialogues.

1) A: Do you know Clara ?

B: No, who is she ?

A: She is over there.

B: .....?

A: She is tall and slim. She has got long straight blonde hair and blue eyes.



2) George: Hey, Steve! .....?

Steve: Andy always tells the truth so she is ..... She is ....., she makes friends easily.

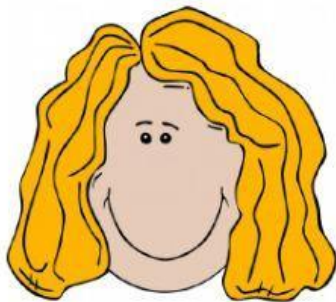
3) Terry: What do you think about Jim ? What is he like ?

Tom: He helps people so he is ..... He gets on well with people. He is .....

**C. Describe the people below. Use the words in parenthesis to talk about their personality.**



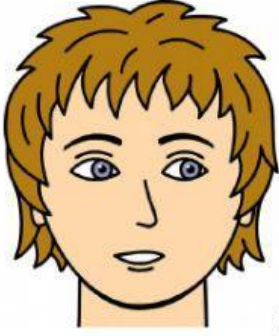
(funny & friendly)



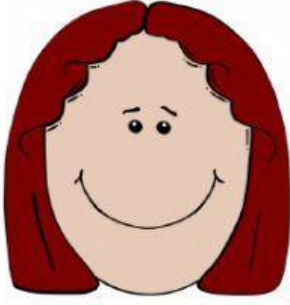
(cheerful & easygoing)



(helpful & smart)



(thoughtful)



(energetic)



(polite)