

Social Science Topic 3.

Name: _____

Date: _____

1) Water is found in the environment in different states. Write the states and give an example of each one. Make a picture in the boxes at the end of the exam. (0.25x6=1,5 ptos)

State: _____

State: _____

State: _____

Example: _____

Example: _____

Example: _____



2) Say whether these statements are true or false. (0.25x4=1 pto)

- a) The hydrosphere helps to regulate the Earth's temperature.
- b) There are no living organisms in the hydrosphere.
- c) Water is polluted due to human action.
- d) The hydrosphere covers the 50% of the earth

3) Correct the Wrong sentences. (0.25x2=0.5 ptos)

4) How is all the water in the hydrosphere distributed? (0.25x2=0.5 ptos)

A. _____

B. _____

5) Tell me 4 different places in which you can find water. (0,25x4=1pto)

A. _____

C. _____

B. _____

D. _____

6) Fill in the gaps to form the definition of "river": (0,25x4=1 pto)

CONTINUOUS

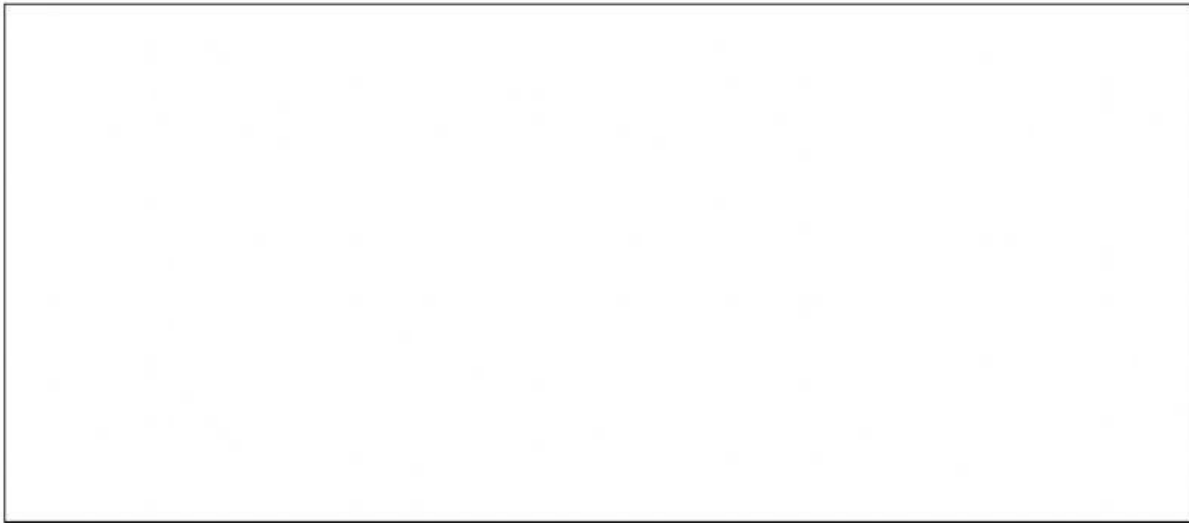
WATER

SNOW

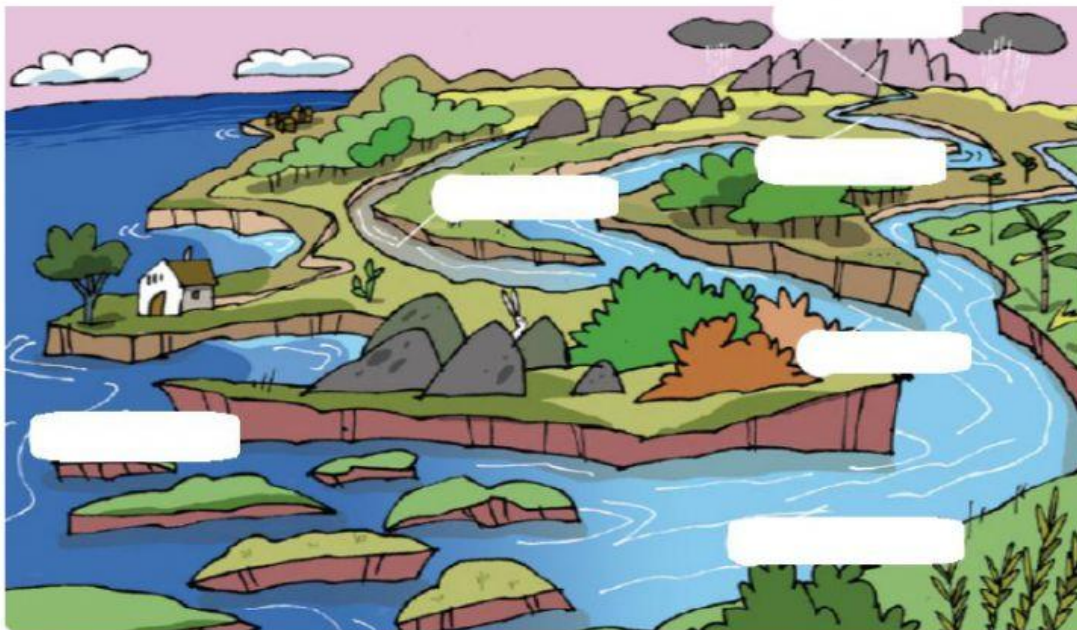
RAIN

A river is a _____ flow of _____ formed by
_____ water or melted _____.

7) Explain the water cycle and make a diagram. (1-point diagram+ 1 point explain)



8) Write the name of each part of the river. (0,25x6= 1,5 points.)



9) Write the correct parts of the river. (0.33x3=1 pto)

This course is at the end.

This course is in the centre. If the land is flat, the river forms a loop called a meander.

This course is at the beginning. There isn't much water in the river here, and it moves quickly. It carries sand and small stones.