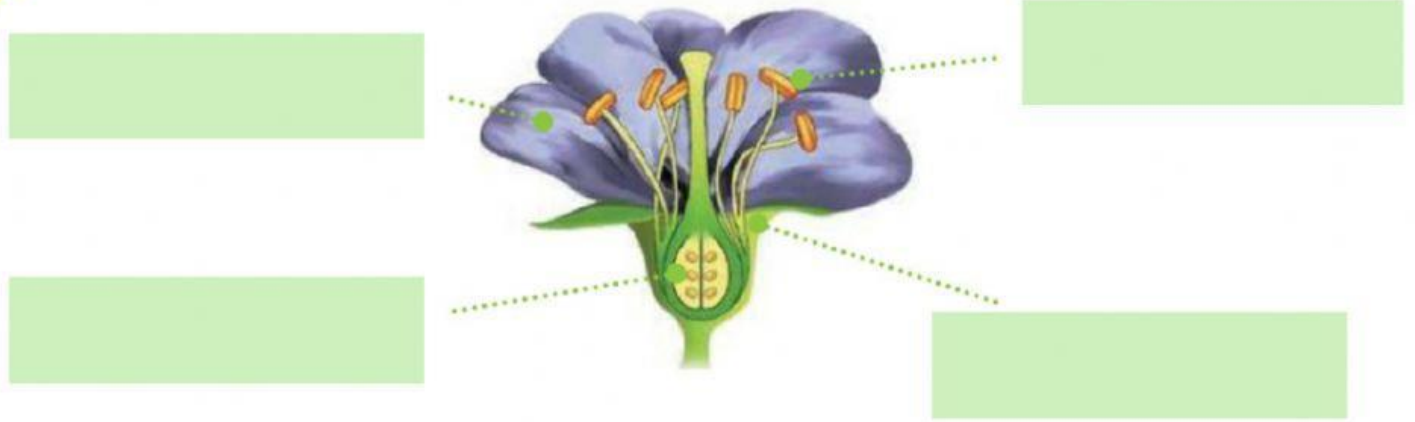


1. Label the parts of the flower:



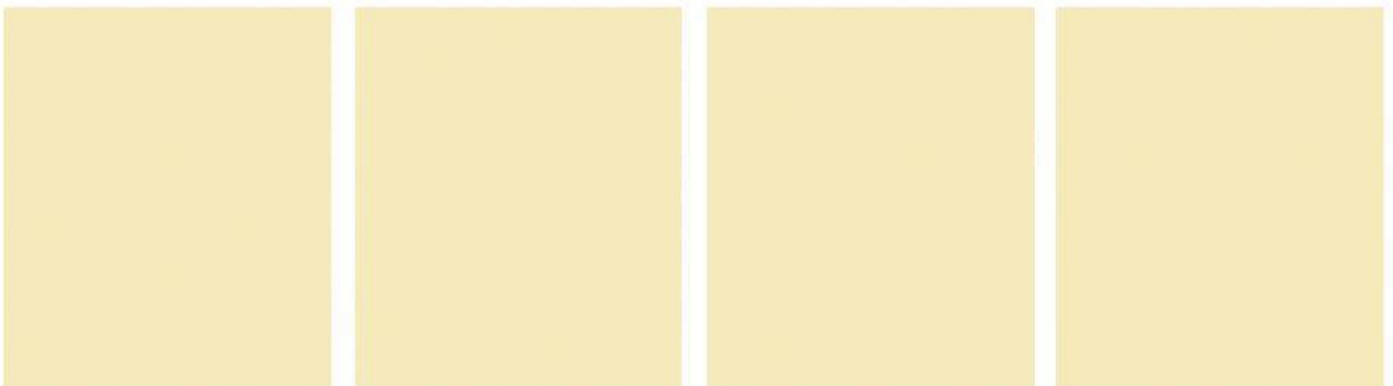
corolla

pistil

calyx

stamens

2. Order the reproduction process:



Then, inside the pistil, the pollen joins an ovule to make a seed.



Finally, the fruit falls on the ground and the seed grows into a new plant.



Next, the petals fall off the flower and the pistil grows around the seed into a fruit.



First, an insect takes pollen from a stamen to a pistil.

3. Label in the correct order:

Photosynthesis



carbon dioxide

sunlight

water

food

minerals

oxygen

