

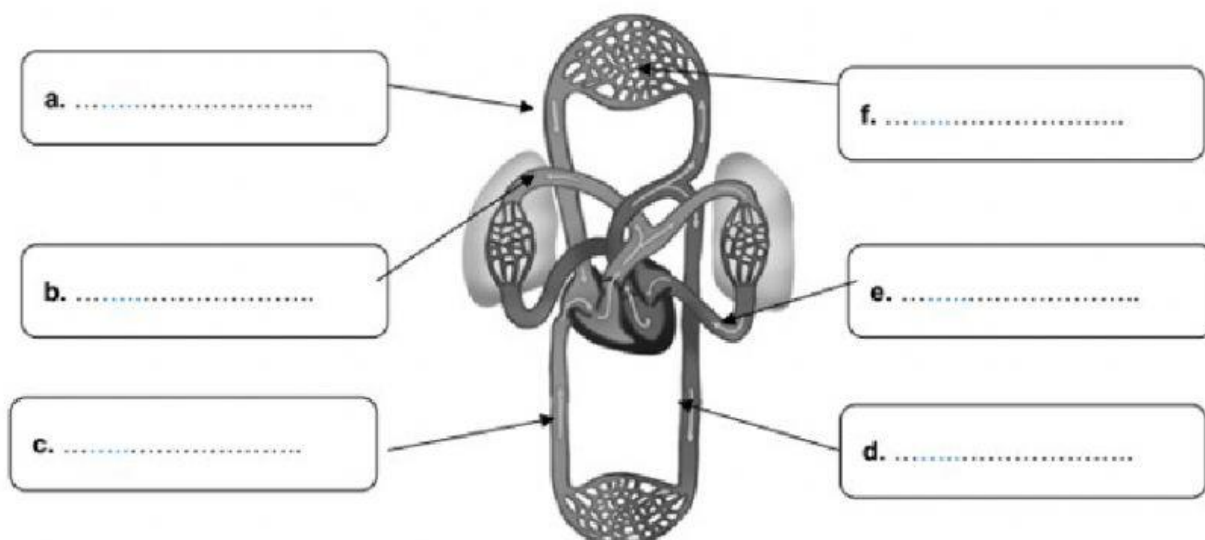
## Natural Science review worksheet – Unit 4

Name: \_\_\_\_\_

Circle *true* or *false*.

- |  |                     |
|--|---------------------|
| a. Arteries carry blood away from the heart.   | <u>true</u> / false |
| b. Veins also carry blood to the heart.        | true / false        |
| c. The heart has four chambers.                | true / false        |
| d. Red blood cells fight bacteria and viruses. | true / false        |
| e. Plasma contains water, gases and nutrients. | true / false        |
| f. Platelets stop bleeding.                    | true / false        |
| g. There are four types of blood vessels.      | true / false        |
| h. The aorta is an example of an artery.       | true / false        |

Label the picture.



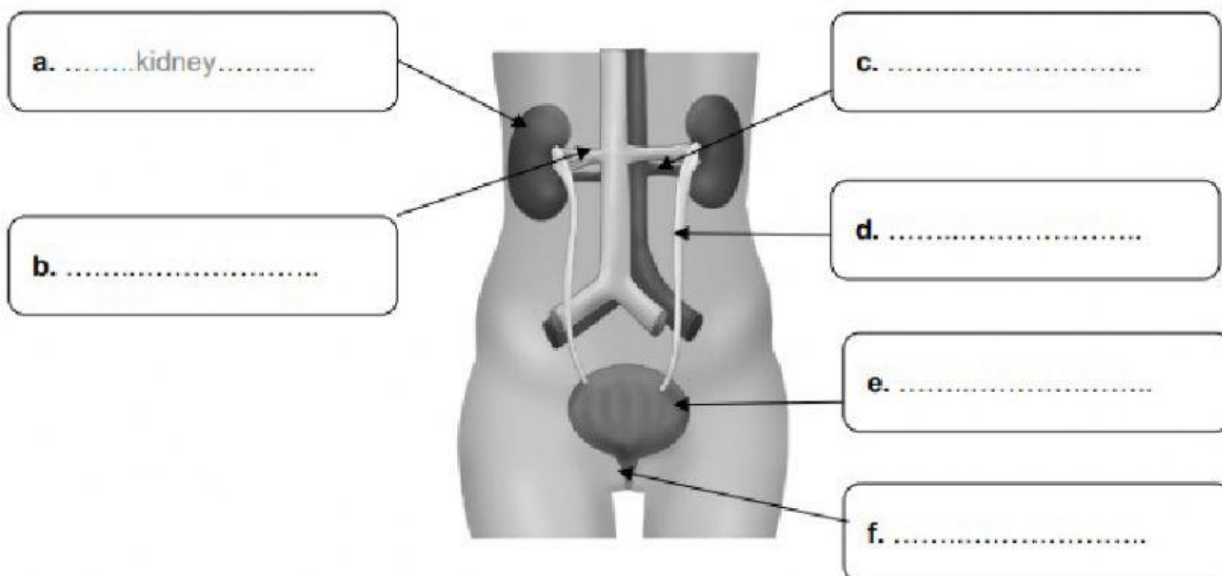
Match the components of the circulatory system with the definitions. Use the words from the box.

arteries    atria    plasma    platelets    red blood cells    white blood cells    veins

- These vessels carry blood away from the heart. ....arteries.....
- These are cell fragments which stick together to stop bleeding. pl.....
- They fight infections such as bacteria and viruses. w.....b.....c.....
- They carry blood away from the heart. v.....
- This mixture contains water, proteins, nutrients and waste product. pl.....
- Along with the ventricles, these are 2 of the 4 heart chambers. a.....
- They carry oxygen and carbon dioxide. r.....b.....c.....

Label the picture with words from the box.

bladder kidney renal artery renal vein urethra ureter



Complete the text with one word in each gap.

The excretory systems is made up two systems: the 1. .... system, and the sweat 2. .... In the first system, the renal 3. .... take blood to the kidneys to be cleaned. The waste products and water produced is called 4. .... Clean blood is taken away from the kidneys via the renal 5. .... Meanwhile the 6. .... take the waste product to the bladder. When the bladder is full, a message is sent to the 7. .... to let us know that we need to urinate, which is done via the 8. .... The second system removes waste via openings in the skin called 9. .... Glands produce sweat which passes through the layers of the skin to evaporate on its surface. Sweat can smell because it mixes with 10. .... that lives on the skin.

Circle the words to complete the sentences.

- Sweat on skin smells because of **salts and minerals** / **bacteria**.
- The urinary system and **kidneys** / **sweat glands** make up the excretory system.
- Pulmonary **veins** / **arteries** carry deoxygenated blood to the lungs.
- Systemic** / **Pulmonary** circulation is between the heart and the rest of the body.