

# I can ask for and give directions

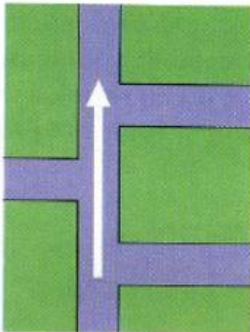
Excuse me. How do I get to the river from here?

Excuse me. Do you know the way to the railway station?

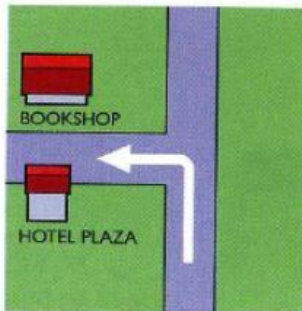
Excuse me. Is there a hotel near here?

## spotlight *Excuse me...*

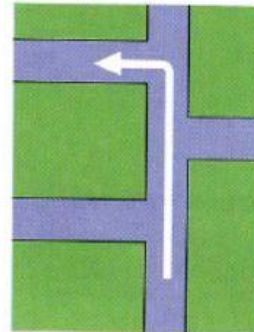
It is polite to say **excuse me** to someone you don't know when you ask them a question.



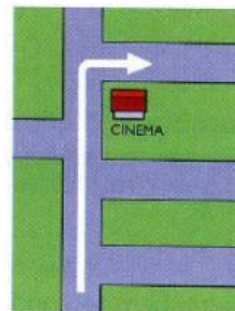
**Go straight on.** OR **Just keep going.**  
It's about ten minutes.



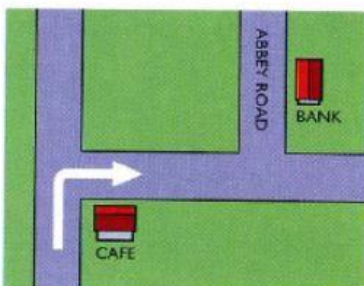
**Go along here and turn left.**  
The bookshop is **opposite** the Hotel Plaza.



Go along here and **take the second turning on the left.**



It's **the third turning on the right.**  
There's a cinema **on the corner.**



**Turn right** at the café, then **left into** Abbey Road,  
and the bank is **on your right.**

Thanks very much.



### 1 Make sentences from the words.

- turn / and / go / right / here / along Go along here and turn right.
- excuse / I / get / do / bank / the / me / how / to / ? \_\_\_\_\_
  - here / left / along / and / turn / go \_\_\_\_\_
  - bank / me / near / there / is / a / excuse / here / ? \_\_\_\_\_
  - the / turning / it's / right / on / the / third \_\_\_\_\_
  - way / the / excuse / to / know / me / do / bank / the / you / ? \_\_\_\_\_
  - left / Road / into / Foster / turn \_\_\_\_\_

### 2 Complete the phrases.

- Turn left or right.
- Take the second \_\_\_\_\_.
  - Thanks very \_\_\_\_\_.
  - On the \_\_\_\_\_.
  - Excuse \_\_\_\_\_.
  - Keep \_\_\_\_\_.
  - Go straight \_\_\_\_\_.
  - Go along \_\_\_\_\_.
  - Do you know the \_\_\_\_\_?

### 3 Complete the dialogues. Use the maps to help you.

- A Excuse ► me . How do I (1) \_\_\_\_\_ to the cinema from here?

B OK. Go (2) \_\_\_\_\_ on, and it's the second... no, the third (3) \_\_\_\_\_ on the (4) \_\_\_\_\_.

A Thanks very (5) \_\_\_\_\_.

B You're welcome.
- A (1) \_\_\_\_\_ me. Is there a post office (2) \_\_\_\_\_ here?

B Yes. Go (3) \_\_\_\_\_ here and (4) \_\_\_\_\_ the second (5) \_\_\_\_\_ on the (6) \_\_\_\_\_.

The post office is (7) \_\_\_\_\_ the bank.

A (8) \_\_\_\_\_ very much.

B That's OK. No problem.
- A Excuse me. Do you know the (1) \_\_\_\_\_ to the Bonham Hotel?

B No, I'm sorry, I don't.

A OK. Thanks... Excuse me. Do you know the Bonham Hotel?

C Yes. (2) \_\_\_\_\_ left (3) \_\_\_\_\_ Frith Street and the hotel is on the next (4) \_\_\_\_\_ on your (5) \_\_\_\_\_.

A Thanks very much.

B Not at all.

