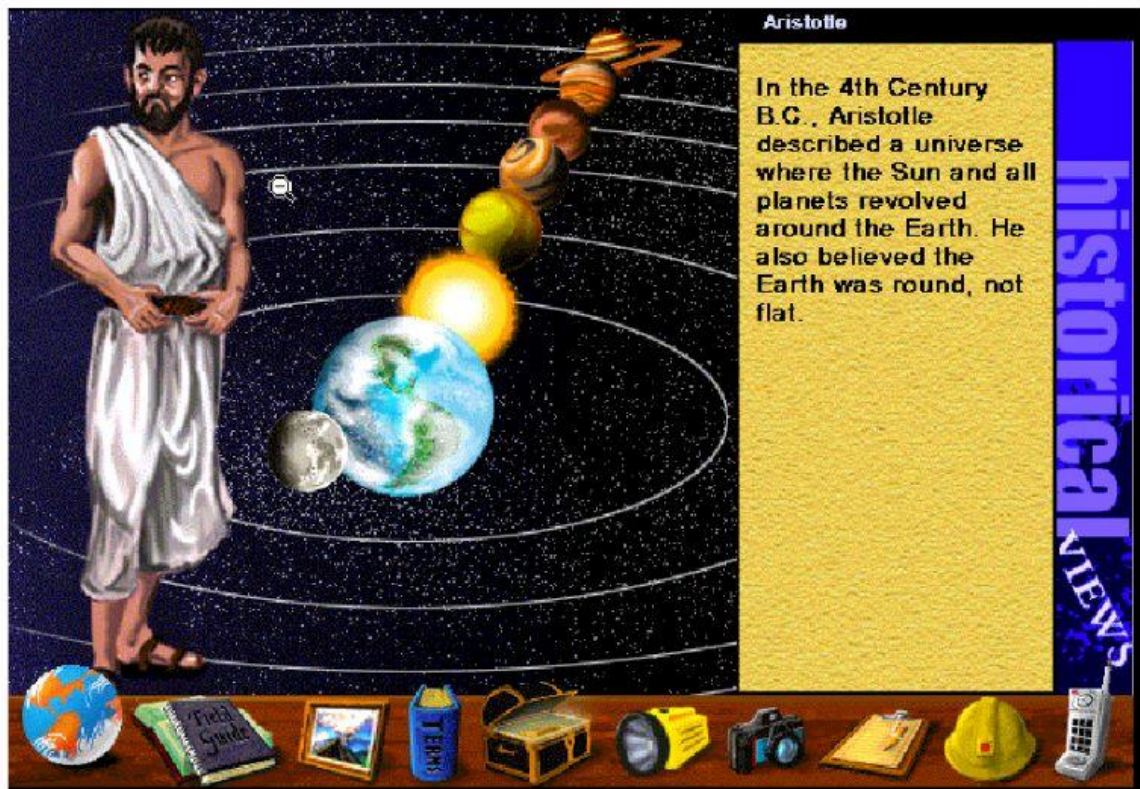
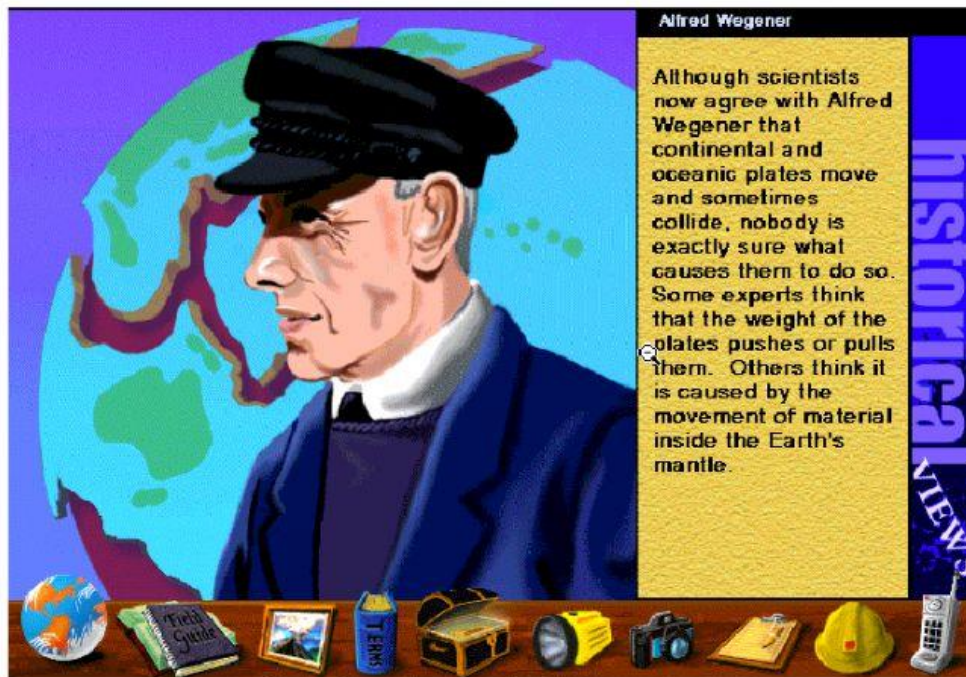


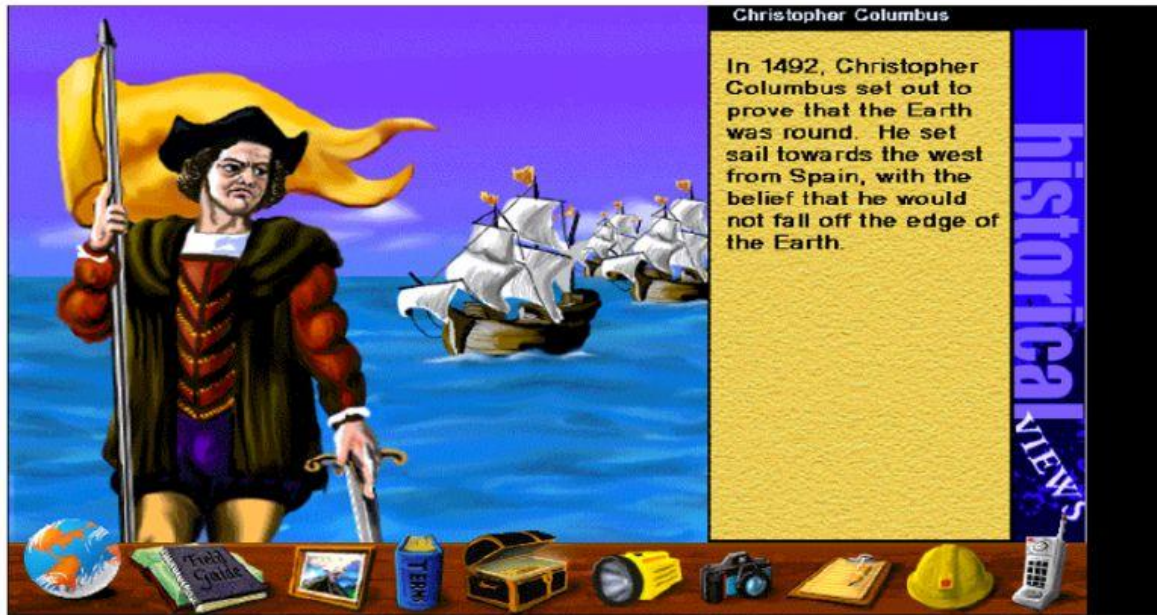
HISTORICAL VIEWS P2



How does Aristotle initially describe a universe?



The scientists now agree with Alfred about:

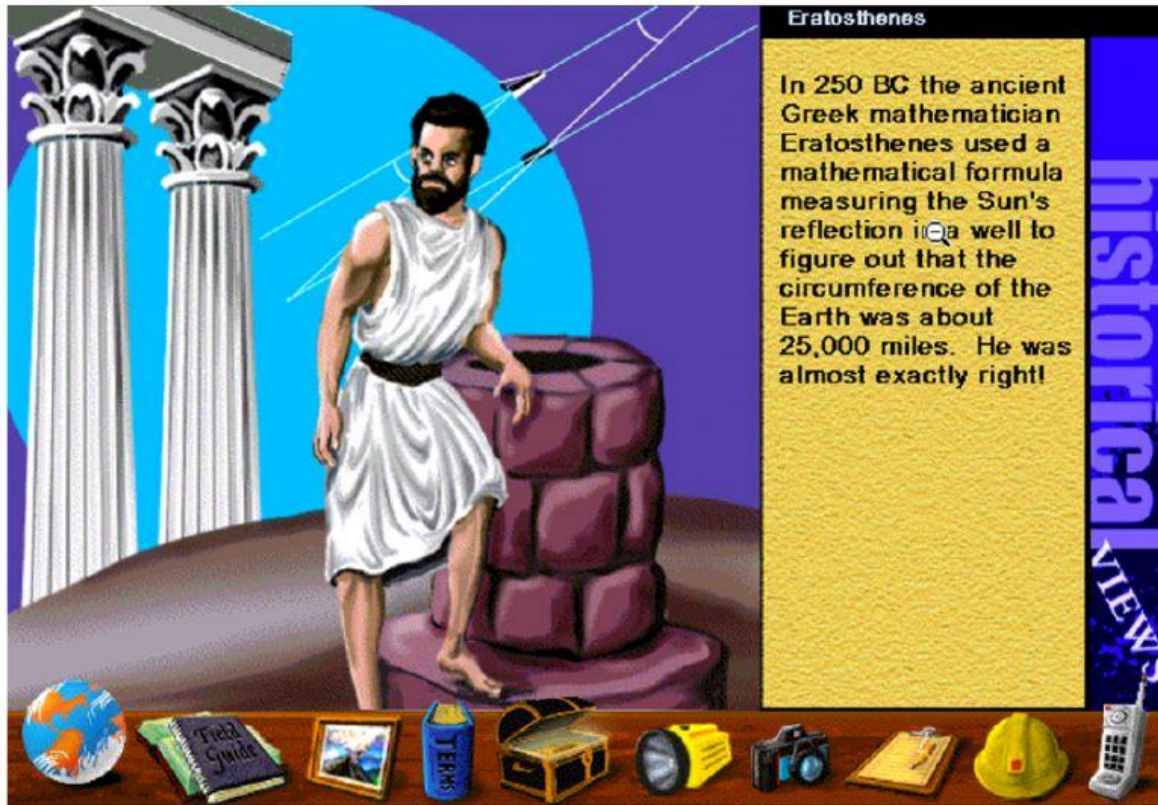


Christopher Columbus

In 1492, Christopher Columbus set out to prove that the Earth was round. He set sail towards the west from Spain, with the belief that he would not fall off the edge of the Earth.

historical
VIEWS

How can he prove that the Earth was round?



How can he calculate the circumference of the Earth?