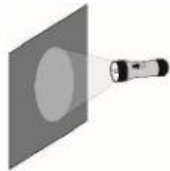


Unit 3 Vocabulary and Topic Review

Grade 2 - Stage 3 Cambridge Primary Science

1. Use these words to complete the sentences below.

visor	translucent	opaque	blocked	scatter	shadow
		frosted	goggles		



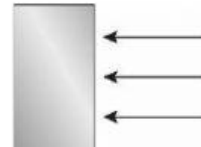
Light cannot get through the _____ material.



Light is scattered by the _____ material.



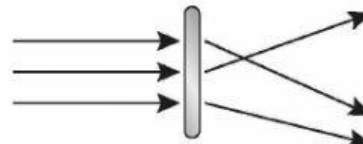
A dark _____ is made when light is blocked.



Light cannot pass when it is _____.



Light is scattered by the _____ glass.



Translucent materials will _____ light.



Wear _____ to protect your eyes.



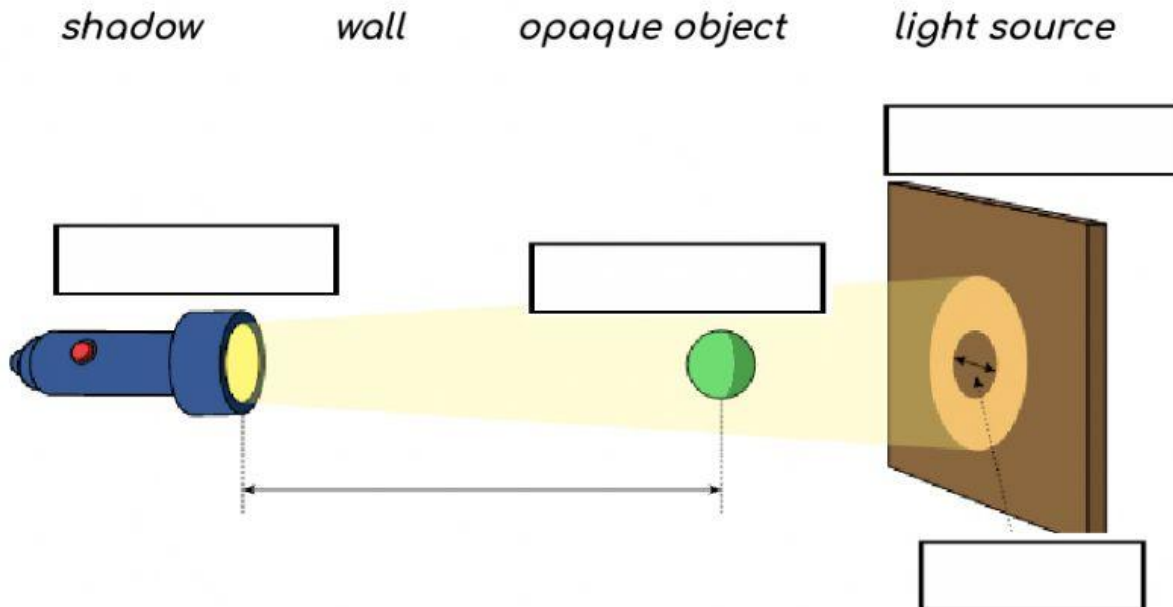
The _____ on the helmet will protect your eyes.

2. Choose TWO words and write your own sentence.

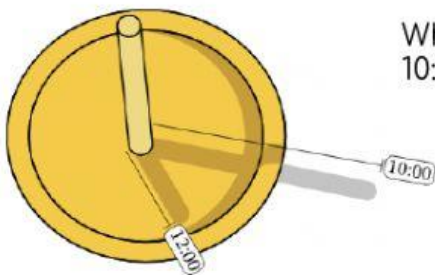
1. _____

2. _____

3. Label the diagram on how a shadow is formed.



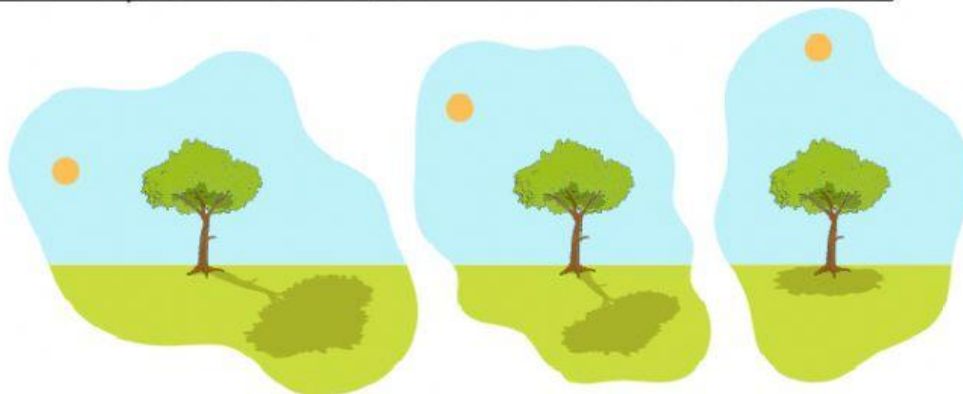
4. The image shows a homemade sundial. Sundials were used in the past as a way of telling time using shadows.



What happened to the length of the shadow between 10:00 and 12:00?

- A. The shadow got longer in length.
- B. The shadow's length stayed the same.
- C. The shadow got shorter in length.

5. Describe the position of the Sun when the shadow is shortest.



- A. The shadow is shortest when the Sun is directly above an object.
- B. The shadow is shortest when the Sun is low in the sky.
- C. The shadow is shortest when the Sun is high in the sky.

Noah wants to find out what happens to a shadow when you move a flashlight closer to and farther from an object.

6. What could he use to measure the size of the shadow?



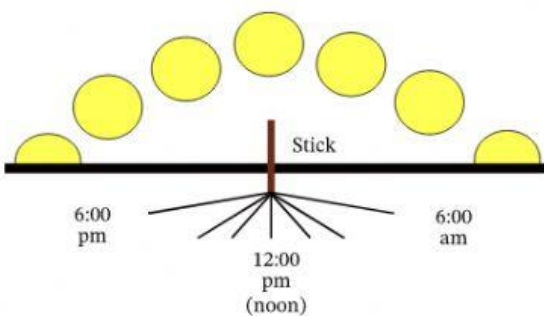
- A. A pencil
- B. A piece of chalk
- C. A flashlight
- D. A meterstick

7. What conclusion can Noah draw from his results?

- A. Shadow gets bigger when the source of light is moved closer to the opaque object.
- B. Shadow gets smaller when the source of light is moved closer to the opaque object.

Noah recorded the length of shadows at different times of the day.

8. At which times during the day are shadows the longest?

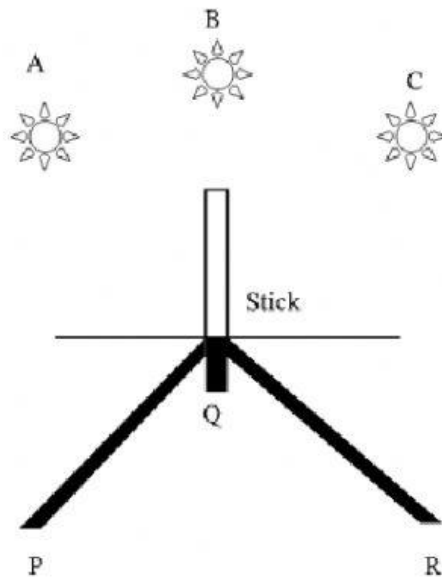


- A. Late morning and late afternoon
- B. Sunrise and sunset
- C. Midmorning and midafternoon
- D. Noon and midnight

9. At which times during the day are shadows the shortest?

- A. Late morning and late afternoon
- B. Sunrise and sunset
- C. Midmorning and midafternoon
- D. Noon or midday

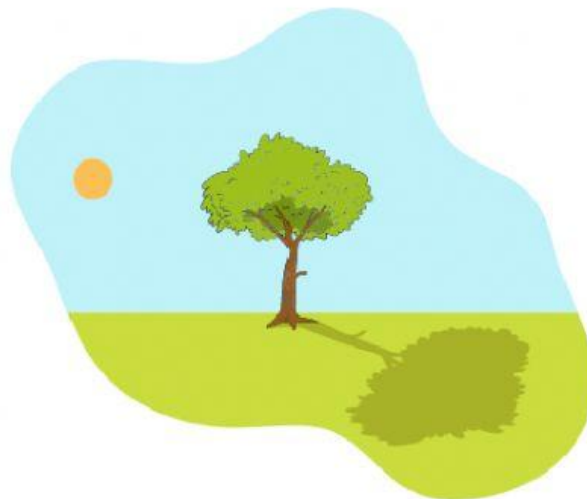
10. Fill in the blank.



- a. When the Sun is in A in the sky, shadow is in _____.
- b. When the Sun is in B in the sky, shadow is in _____.
- c. When the Sun is in C in the sky, shadow is in _____.

11. As the position of the Sun in the sky changes, the shadow of the tree changes. In the morning, its shadow is long, and it shrinks as it gets closer to midday.

Approximately, what time do you think it is in the picture?



- A. 12:00 pm (noon)
- B. 00:00 am (midnight)
- C. 9:00 am
- D. 2:00 pm