



STUDENT NAME			
CLASS		DATE	

SCIENCE 3
Term I Mock Test (REVISION)

Students answer on the Question Paper.

Additional Materials: Pen
Pencil

READ THESE INSTRUCTIONS FIRST

The number of marks is given in brackets [] at the end of each question or part question.
You should show all your working on the test paper and write your final answers on the space provided.

The total number of marks for this paper is 30.

Avoid erasures.

Contents:

Unit 5.1 Properties of Materials

Unit 5.3 Uses of Materials

Unit 6.1 Push and Pull

Unit 6.4 Forcemeters

Unit 1.2 The Human Skeleton

Unit 1.2 Skeleton and Movement

Unit 1.5 Drugs as Medicine

Unit 2.1 Amazing Birds

For Teacher's Use	
Page	Mark
1	
2	
3	
4	
Total	

Question 1 (Properties of Materials)

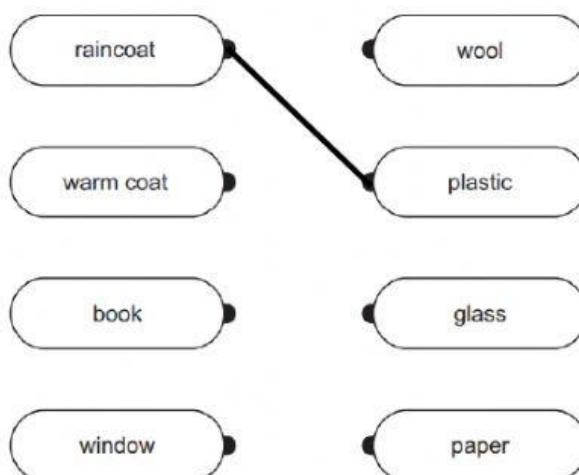
The table shows some materials and their properties. Complete the table below by answering **YES** or **NO**.

Material or Object	Property of Materials		
	Is it Flexible?	Is it Hard?	Is it Shiny?
Glass Window	YES
Wool Clothes	NO
Plastic Bag	YES
Rubber Boots	NO
Coin	NO
Newspaper	NO
Diamond	YES
Rockwall	NO

[16]

Question 2 (Uses of Materials)

Draw a line to connect each object to the material it is made from. The first one is done for you.



[3]

tissue

cotton

key

wood

table

paper

pillow

nylon

umbrella

metal

[5]

Question 3 (Push and Pull)

Write down if each picture shows a **push** force or a **pull** force. One has been done for you.



push





[10]

Question 4 (Forcemeters)

Rajiv measures forces. Answer the question below.



- a. Rajiv uses equipment **X** to measure the force. Write down the name of equipment **X**.

.....

The force of the bag on **X** is 2 Units.

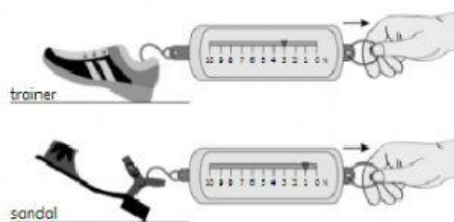
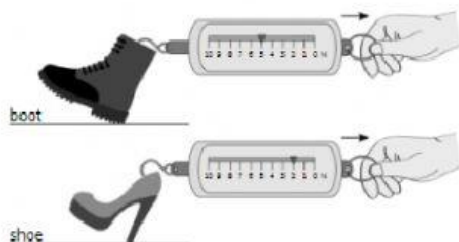
- b. How can Rajiv increase the force on **X**?

.....

- c. What unit should Rajiv use to refer to the force of the bag?

..... [3]

- d. Complete the table by supplying the needed information from the pictures below.

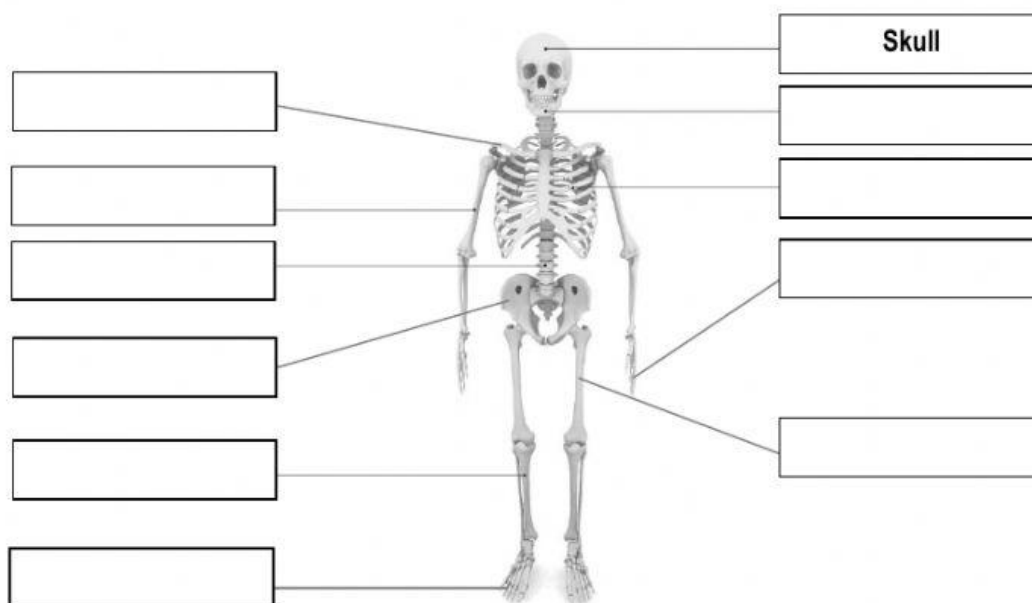


Type of Footwear	Force needed to pull it
Boot	
Shoe	
Trainer	
Sandal	

- e. Which footwear needed the most force to be pulled?
.....
- f. Which footwear needed the least force to be pulled?
.....
- g. If we double the number of footwears, will the force needed to pull the object be the same, increase or decrease?
.....

Question 5 (The Human Skeletons)

Label the bones in our bodies. Choose one from the options and write it on the box. One is done for you.

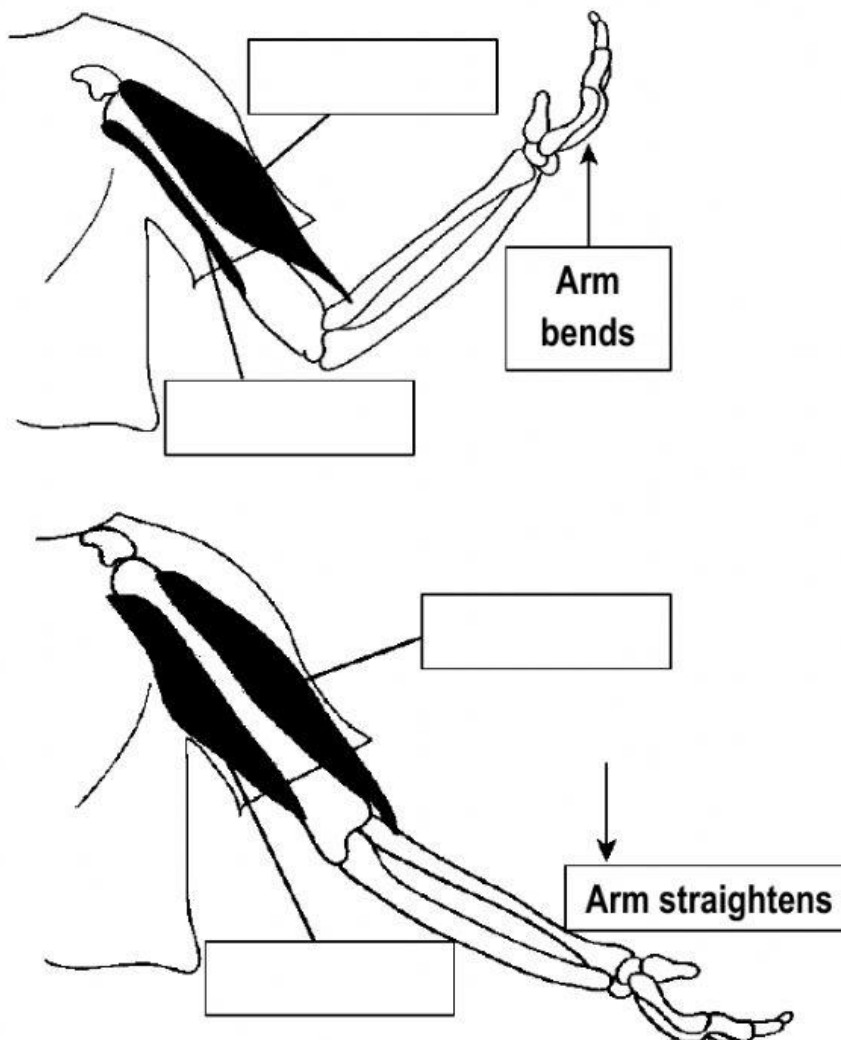


Skull	Finger Bones	Vertebrae	Leg Bone
Toe Bone	Arm Bone	Hip Bone	Rib
	Shin Bone	Collar Bone	

[9]

Question 6 (Skeletons and Movement)

Describe what happens to the muscles in your arm when you lift your arms. Write your answer on the box.



[4]

When we bend our arms, the biceps _____ while the triceps _____.

When we straighten our arms, the biceps _____ while the triceps _____.

Question 7 (Drug as Medicine)

True or False. Write **T** if the statement is True and **F** if it is not.

- T** 1. All medicines are drugs.
2. Medicines give us symptoms of illnesses.
3. Never take medicines prescribed for someone else.
4. Tobacco is good for our bodies.
5. Vaccines prevent illnesses.
6. Drugs that have good effects to the bodies are called illegal drugs.
7. Medicines can kill harmful germs in the body.
8. Stop taking prescribed medicines when you start to feel better.
9. You can take medicines without consulting a doctor or your parents.

[8]

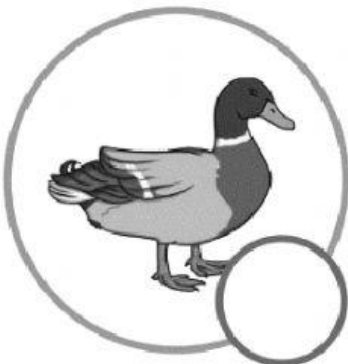
Question 8 (Amazing Birds)

Below are pictures of birds and on the box are their adaptations. Match the birds to their adaptations by writing the number on the circle. The first one is done for you.

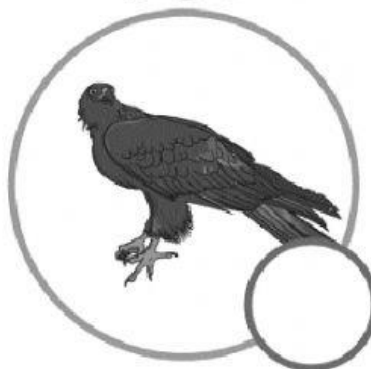
1. Can turn its head up to 270 ° to look at its back
2. Has very sharp and strong talons to tear meat
3. Has webbed feet for swimming
4. Has a large tail with eye pattern to trick predators

5. Has a thick layer of feathers to keep warm
6. Has long legs to easily walk through water.
7. Has very strong beaks to peck wood.

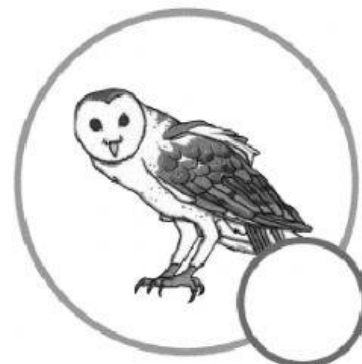
duck



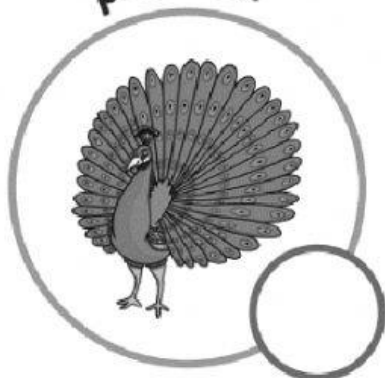
eagle



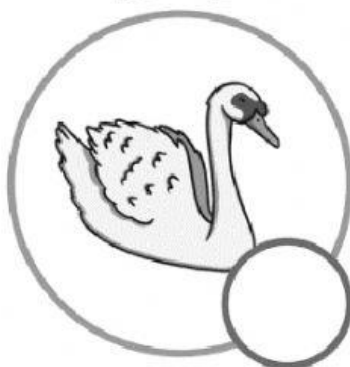
owl



peacock



swan



woodpecker



flamingo



penguin



--- END ---